



# *North Carolina*

---

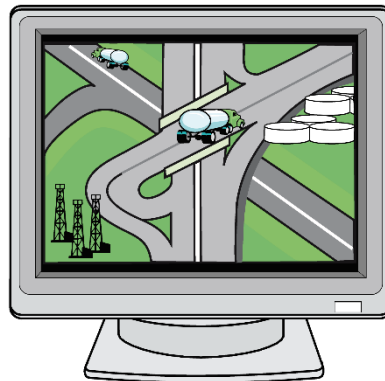
---

## **Department of Revenue Motor Fuels EDI Implementation Guide**

---

---

Fuel Tracking System... the way of the future.



### **Version 1.0**

**October 2005  
ANSI ASC X12 V.4030**

**(Adapted from the FTA Electronic Combined Reporting Methods  
Implementation Guide)**

**NCDOR Updated November 2022 v.1.0.6**

# Table of Contents

---

<b>Chapter 1 - Introduction.....</b>	<b>1-5</b>
General Information .....	1-5
Advantages .....	1-5
Contact Information.....	1-5
Understanding EDI.....	1-6
EDI Version.....	1-6
EDI Filing Method .....	1-6
EDI 813 File Naming Convention.....	1-7
EDI 820 File Naming Convention.....	1-8
EDI File Structure.....	1-8
Available EDI Filing .....	1-9
EDI 813 Timely Filing .....	1-9
EDI 820 Timely Payment.....	1-10
EDI 813 Certification Procedures.....	1-11
EDI 820 Certification Procedures.....	1-11
EDI 813 Production Filing Procedures.....	1-12
EDI 820 Production Filing Procedures.....	1-12
EDI Acknowledgments .....	1-13
FTA Review .....	1-13
<b>Chapter 2 - Motor Fuels X12 Data Model.....</b>	<b>2-14</b>
<b>Chapter 3 – X12 Attribute and Separator Conventions .....</b>	<b>3-15</b>
<b>Chapter 4 – X12 EDI Envelope .....</b>	<b>4-16</b>
Envelope Flows .....	4-16
Interchange Control Header Description .....	4-17
Functional Group Header Description.....	4-18
Functional Group Trailer Description .....	4-18
Interchange Control Trailer Description.....	4-18
<b>Chapter 5 - 813 EDI Combined Reporting .....</b>	<b>5-19</b>
ANSI ASC X12 – 813 EDI Standard .....	5-19
813 Structure .....	5-21
813 Map Flow .....	5-22
Transaction Set Header Description.....	5-24
Transaction Set - Terminal Operator Report (TOR).....	5-30
<b>Sequence ID Number Usage.....</b>	<b>5-30</b>
Transaction Set - Supplier/Distributor Report (SDR).....	5-33
Transaction Set – Transporter Report (CCR).....	5-36
Summary Information .....	5-38
North Carolina Summary Mapping.....	5-41
Schedules .....	5-42
Transaction Set Trailer Description .....	5-49
<b>Chapter 6 - 820 ACH Debit Payment .....</b>	<b>6-50</b>
ANSI ASC X12 – 820 EDI Standard.....	6-50
820 Structure .....	6-59
820 Map Flow .....	6-60
Transaction Set Header Description .....	6-62
Transaction Set Trailer Description .....	6-65
<b>Chapter 7 - 997 Functional Acknowledgment .....</b>	<b>7-66</b>
ANSI ASC X12 – 997 EDI Standard .....	7-66
997 EDI Map.....	7-66
Transaction Set Header Description.....	7-67

---

# Table of Contents

---

Transaction Set Trailer Description .....	7-70
<b>Appendix A - EDI Trading Partner Profile .....</b>	<b>A-72</b>
<b>Appendix B - Filing Procedures .....</b>	<b>B-76</b>
<b>Appendix C - North Carolina Schedules .....</b>	<b>C-77</b>
<b>Appendix D - North Carolina Product Codes.....</b>	<b>D-78</b>
<b>Appendix E - Summary Codes / TIA Codes .....</b>	<b>E-79</b>
<b>Appendix F - Transaction Type Mode Codes .....</b>	<b>F-82</b>
<b>Appendix G - USA States, Canadian Provinces/ Territories and Mexican States Codes .</b>	<b>G-83</b>
<b>Appendix H - Open.....</b>	<b>H-85</b>
<b>Appendix I - Amended Returns .....</b>	<b>I-86</b>
<b>Appendix J - Sample EDI Files .....</b>	<b>J-87</b>
Gas-1202 Motor Fuel Supplier Return (SDR).....	J-87
Gas-1202 Motor Fuel Supplier Return (SDR) – No Activity (Zero Return) .....	J-90
Gas-1202 Motor Fuel Supplier Return (SDR) –Amended Filing .....	J-91
Gas-1204 Motor Fuel Terminal Operator Return (TOR).....	J-93
Gas-1301 Motor Fuel Transporter Return (CCR).....	J-95

# Table of Contents

---

## References

### ASC X12

The Accredited Standards Committee  
Subcommittee - X12G – Government  
Task Group 2 (X12G/TG2)  
Tax Information Interchange Development  
TIGERS  
World Wide Web site: <http://www.x12.org>

### ASC X12 Standards Manual

Publications Manager, Publications Department  
Data Interchange Standards Association (DISA)  
333 John Carlyle Street, Suite 600, Alexandria, VA 22314  
Phone: 703-548-7005 FAX: 703-548-5738  
E-mail: [publications@disa.org](mailto:publications@disa.org)  
World Wide Web site: <http://www.disa.org>

### FTA Uniformity Guide

Motor Fuel Tax Section, Uniformity Project  
Federation of Tax Administrators (FTA)  
444 N. Capitol St., NW, Washington, DC 20001  
Contact: Cindy Anders-Robb  
Phone: (307) 632-4144 Fax: (307) 632-3234  
E-mail: [cindy.anders-robb@taxadmin.org](mailto:cindy.anders-robb@taxadmin.org)  
World Wide Web site: <http://www.taxadmin.org>

*It is recommended that you refer to the FTA Uniformity Guide to implement the Motor Fuels Uniformity methods.*

# Chapter 1 - Introduction

The North Carolina Department of Revenue (Department) is implementing an electronic filing program. Both returns and payments will be accepted in the Department's electronic filing program. The following returns are included in the new filing program, as well as payments for any of these returns:

- Gas-1202: Motor Fuel Supplier Return
- Gas-1204: Motor Fuel Terminal Operator Return
- Gas-1301: Motor Fuel Transporter Return

## ***General Information***

Electronic Data Interchange (EDI) is the exchange of business documents from one company's computer to another company's computer in machine-processable formats. Purchase orders, invoices, and tax forms can all be exchanged via EDI. Using EDI to exchange business information reduces the expense associated with processing paper (sorting mail, opening envelopes, logging in of documents, etc.). In addition, the costs, errors and time delays associated with data entry are also reduced. Diverse industries have found that EDI makes tremendous economic sense. Government agencies also see the value in reducing the paper-intensive filing of motor fuel returns by implementing EDI.

## ***Advantages***

Trading partners using EDI are able to reduce paperwork and costs of handling that paperwork.

- Filing via EDI eliminates postal delays and associated late filing penalties.
- Data entry errors are greatly reduced.
- Fuel Tracking and Cross Matching will be computerized, giving the Department tools to reduce fraud, and therefore giving fuel distributors a level playing field.
- Complete audit trail of tax forms and schedules.

This EDI Implementation guide follows version 4030 of the EDI ANSI ASC X12 standards. This guide's purpose is to assist you in implementing and filing EDI for motor fuel returns and associated schedules.

## ***Contact Information***

EDI Coordinator:	Colleen Burgess
Phone:	919-814-9719; Agent ID#: 327516
Fax:	(919) 250-7898
E-mail:	<a href="mailto:EDICoordinator@ncdor.gov">EDICoordinator@ncdor.gov</a>

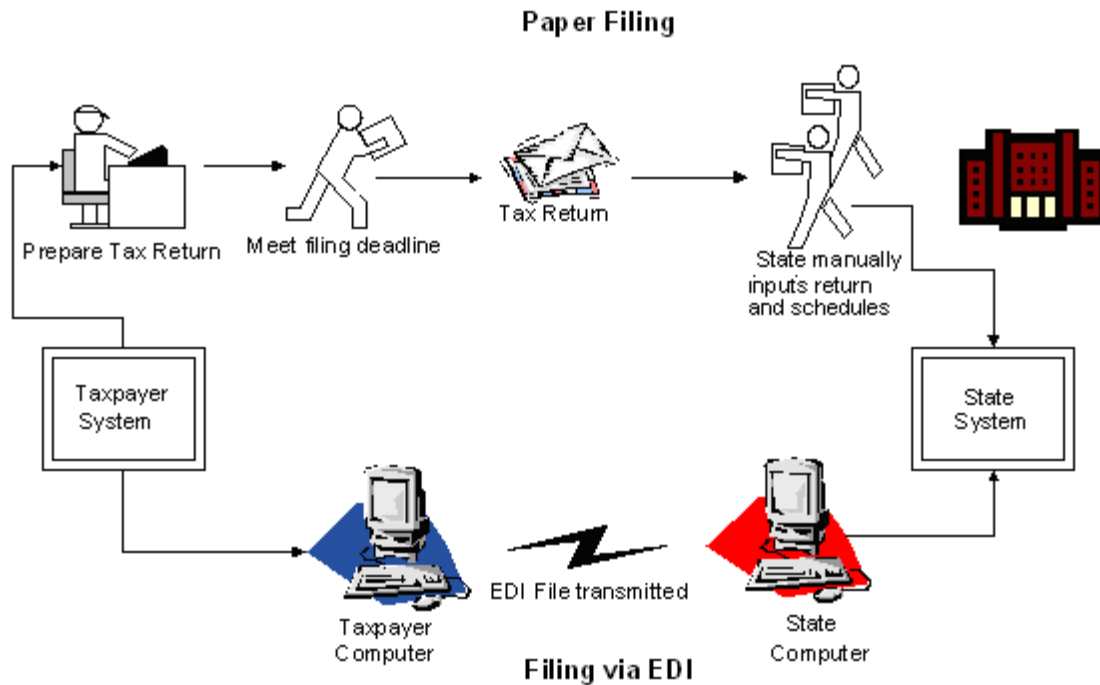
Business Contact:	Isa Momoh
Phone:	919-814-9719; Agent ID#: 327531
Fax:	(919) 250-7898
E-mail:	<a href="mailto:Isa.Momoh@ncdor.gov">Isa.Momoh@ncdor.gov</a>

Note:	All correspondence should be sent to the following address: North Carolina Department of Revenue Excise Tax Division 3301 Terminal Drive, Suite 125 Raleigh, NC 27604
-------	-----------------------------------------------------------------------------------------------------------------------------------------------------------------------------------

## Understanding EDI

EDI is used extensively in industry. For example, the retail and manufacturing industries submit purchase orders, cut invoices, process shipping notifications, and remit payments; all electronically. Accuracy is increased and cost is reduced. Because documents are filed electronically, businesses no longer need to store large quantities of paper documents.

EDI may seem complex, but once the basics are understood, the concept is really quite simple. As stated earlier, EDI is a method to electronically exchange business documents using a standard format. To facilitate this exchange of documents, two things are needed. First, the taxpayer (or trading partner) needs a method to send and receive electronic documents. Second, the taxpayer needs software to translate schedules and tax returns into the standard EDI format.



## EDI Version

North Carolina is using the ANSI ASC X12 Version Release 004030 EDI standards for the EDI 813 (Electronic Filing of Tax Return Data) and the EDI 820 (ACH Debit Payment) transaction set. Many states have implemented, or are planning on implementing, the EDI 813 for motor fuel tax filing. Previous releases of the EDI 813 transaction set allowed for individual state variations in EDI filing. Version 4030 promotes uniformity in motor fuel tax filing. As more states migrate to the 4030 version, filers will be able to create a more generic EDI map, reducing the effort needed to track individual state variations.

## EDI Filing Method

The Department will accept EDI files via a secure web application. For more information about filing procedures, see Appendix B on Filing Procedures.

## ***EDI 813 File Naming Convention***

- Format:            **NCacct\_rpt\_ccyymm\_nn.edi**
- “NC” is the state abbreviation
  - “acct” is the 11 digit State Account Number
  - “rpt” is a three character return type
    - “SDR” – Supplier
    - “CCR” – Transporter
    - “TOR” – Terminal Operator
    - “CBF” – Combined Returns
  - “ccyymm” is the reporting period year and month
  - “nn” represents an original or amended sequence
    - “00” for an original return (including resubmissions of an original)
    - “01” for the first amended return
    - “02” for the second amended return
    - etc.

- Examples:            **NC1122233301\_CBF\_200501\_00.edi**
- “NC”                    for North Carolina
  - “1122233301”        for the 11 digit State Account Number
  - “CBF”                 the file contains more than one return type (Supplier and/or Terminal Operator and/or Transporter)
  - “200501”             for the reporting year and month
  - “00”                    the file contains an original return

- NC1122233301\_SDR\_200501\_01.edi**
- “NC”                    for North Carolina
  - “1122233301”        for the 11 digit State Account Number
  - “SDR”                 the file contains only the Gas 1202 Supplier Return
  - “200501”             for the reporting year and month
  - “01”                    the file contains the first amended Supplier Return

The Department prefers to receive all returns in a single file (using separate 813 Transaction Sets). However, the filer can choose to send each Supplier Return, Terminal Operator Return, and Transporter Return in a separate file. Do not include returns in the same file as the 820 transaction sets.

## ***EDI 820 File Naming Convention***

- Format:            **NCacct\_PAY\_ccyymm\_nn.edi**
- “NC” is the state abbreviation
  - “acct” is the 11 digit State Account Number
  - “PAY” indicates payment
  - “ccyymm” is the reporting period year and month
  - “nn” represents an original or amended sequence
    - “00” for an original payment (including resubmissions of an original)
    - “01” for the first subsequent payment
    - “02” for the second subsequent payment
    - etc.

- Examples:            **NC1122233301\_PAY\_200501\_00.edi**
- “NC”                            for North Carolina
  - “1122233301”                for the 11 digit State Account Number
  - “PAY”                           indicates a payment
  - “200501”                      for the reporting year and month
  - “00”                             the file contains an original return

- NC1122233301\_PAY\_200501\_02.edi**
- “NC”                            for North Carolina
  - “1122233301”                for the 11 digit State Account Number
  - “PAY”                           indicates a payment
  - “200501”                      for the reporting year and month
  - “01”                             represents the first subsequent payment

The Department prefers to receive all payments in a single file (using separate 820 Transaction Sets). However, the filer can choose to send each payment in a separate file. Do not include payments in the same file as the 813 transactions sets.

## ***EDI File Structure***

Each 813 (return) must be submitted with its own ST loop (ST segment through SE segment). Multiple ST-SE loops can be submitted under one ISA envelope or each can be sent under a separate ISA envelope. However, since the ISA15 controls the test/production indicator; test and production returns cannot be combined under the same ISA envelope.

Each 820 (payment) must be submitted with its own ST loop (ST segment through SE segment). Multiple ST-SE loops can be submitted under one ISA envelope or each can be sent under a separate ISA envelope. However, since the ISA15 controls the test/production indicator; test and production returns cannot be combined under the same ISA envelope.

Note: Each EDI file must contain either all 813 transaction sets or all 820 transaction sets. The two transaction sets should never be included in one file.



## ***Available EDI Filing***

The following returns may be filed via EDI:

- Gas-1202: Motor Fuel Supplier Return
- Supporting Schedules for Gas-1202
  - Supplier Schedule of Tax-Paid Receipts
  - Supplier Schedule of Disbursements
- Gas-1204: Motor Fuel Terminal Operator Return
- Supporting Schedules for Gas-1204
  - Terminal Operator Schedule of Receipts
  - Terminal Operator Schedule of Disbursements
- Gas-1301: Motor Fuel Transporter Return
- Supporting Schedules for Gas-1301
  - Schedule of Deliveries

Payments for the Gas-1202, Gas-1204 and Gas-1301 may also be filed via EDI.

## ***EDI 813 Timely Filing***

The due date for filing your Motor Fuel Tax Return and Schedules via EDI is the same as if you had filed a paper return. This means the EDI filing must be both transmitted and received by the Department on or before the due date.

Due dates for each return follow:

Gas-1202: Motor Fuel Supplier Return

The Supplier return is due on or before the 22nd day of the month following the month of activity.

Gas-1204: Motor Fuel Terminal Operator Return

The Terminal Operator return is due the 22nd of the month following the month of activity.

Gas-1301: Motor Fuel Transporter Return

The Transporter Return is due the 22nd of the month following the month of activity.

If a return due date falls on a holiday or weekend, the tax return is due no later than the first business day after the holiday or weekend. The Department bases timely returns on the date of receipt of the electronic return.

## HOLIDAY SCHEDULE

New Year's Day	January 1 <sup>st</sup>
Martin L. King Day	Third Monday in January
Good Friday	Three days before Easter
Memorial Day	Last Monday in May
Independence Day	July 4 <sup>th</sup>
Labor Day	First Monday in September
Veteran's Day	November 11 <sup>th</sup>
Thanksgiving Day	Fourth Thursday in November and Friday after Thanksgiving
Christmas Day	December 24 <sup>th</sup> , December 25 <sup>th</sup> , and December 26 <sup>th</sup>

NOTE: State Holiday - When a legal holiday falls on a Sunday, it will be observed on the following Monday. When a legal holiday falls on a Saturday, it will be observed on the preceding Friday.

### ***EDI 820 Timely Payment***

The due date for paying your Motor Fuel Tax payments via EDI is the same as if you had sent an EFT payment or check. This means the EDI payment must be both transmitted and received by the Department on or before the due date.

The payment due date for the **Gas-1202 Motor Fuel Supplier Return** is on or before the 22nd day of the month following the month of activity.

If a tax due date falls on a Saturday, Sunday, or a State or bank holiday, the deposit by EDI is required on or before the next banking day. If the initiation date falls on a Saturday, Sunday, or a State or bank holiday the transaction by EDI must be initiated on the preceding business day.

### ***EDI 813 Certification Procedures***

- 1) Prior to submitting an EDI file for testing you must complete a Trading Partner Agreement and mail an original signed copy to the Department. A copy of the Trading Partner Agreement can be found in Appendix A.
- 2) You are required to file returns online by manually keying returns in the online application until you have successfully completed the EDI certification phase and are approved for EDI production using Version 4030.
- 3) Three successful transmissions of different filing period returns satisfy the certification phase. You must submit test files for each type of return you file. Please submit your three most current month's tax returns as your test returns.
- 4) The files are processed each business day, translated and reviewed by the Department. Please view your message folder from the Main Menu of the Fuel Tracking System. Your message will be available within 24 hours after the date of transmission.
- 5) After receiving each test, we will notify you of the results.
- 6) After successfully completing all phases, you will be notified that you may begin production EDI filing of your returns.
- 7) Whenever you make a significant change to your program, you should run another test with us to ensure accuracy and reliability.

### ***EDI 820 Certification Procedures***

- 1) Prior to submitting an EDI file for testing you must complete a Trading Partner Agreement and mail an original signed copy to the Department. A copy of the Trading Partner Agreement can be found in Appendix A.
- 2) You are required to make payments using your current method until you have successfully completed the certification phase and are approved for production using Version 4030.
- 3) Two successful transmissions of Supplier Return Payments satisfy the certification phase.
- 4) The files are processed each business day, translated and reviewed by the Department. Please view your message folder from the Main Menu of the Fuel Tracking System. Your message will be available within 24 hours after the date of transmission.
- 5) After receiving each test, we will notify you of the results.
- 6) After successfully completing all phases, you will be notified that you may begin production EDI filing of your payments.
- 7) Whenever you make a significant change to your program, you should run another test with us to ensure accuracy and reliability.

### ***EDI 813 Production Filing Procedures***

1. Before filing a production return, your company must be certified by the Department's EDI Coordinator. See EDI Certification Procedures for further instruction on test filings.
2. After completing the certification phase, you will be notified when you are to begin production EDI filing.
3. When filing a production return, remember to change your ISA15 (test/production flag) from 'T' to 'P'.
4. Follow the steps listed in Appendix B (Filing Procedures) to transmit your file.
5. Confirm receipt of your EDI filing by viewing your message folder from the Main Menu of the Fuel Tracking System. Your message will be available within 24 hours after the date of transmission. If you have not received a message within 24 hours, it is your responsibility to contact the Department.

### ***EDI 820 Production Filing Procedures***

1. Before filing a production payment, your company must be certified by the Department's EDI Coordinator. See EDI Certification Procedures for further instruction on test filings.
2. After completing the certification phase, you will be notified when you are to begin production EDI payments.
3. Filers sending payments in production should not double-pay by initiating EFT payments or sending checks.
4. When filing a production payment, remember to change your ISA15 (test/production flag) from 'T' to 'P'.
5. Follow the steps listed in Appendix B (Filing Procedures) to transmit your file.
6. Confirm receipt of your EDI payment by viewing your message folder from the Main Menu of the Fuel Tracking System. Your message will be available within 24 hours after the date of transmission. If you have not received a message within 24 hours, it is your responsibility to contact the Department.

## ***EDI Acknowledgments***

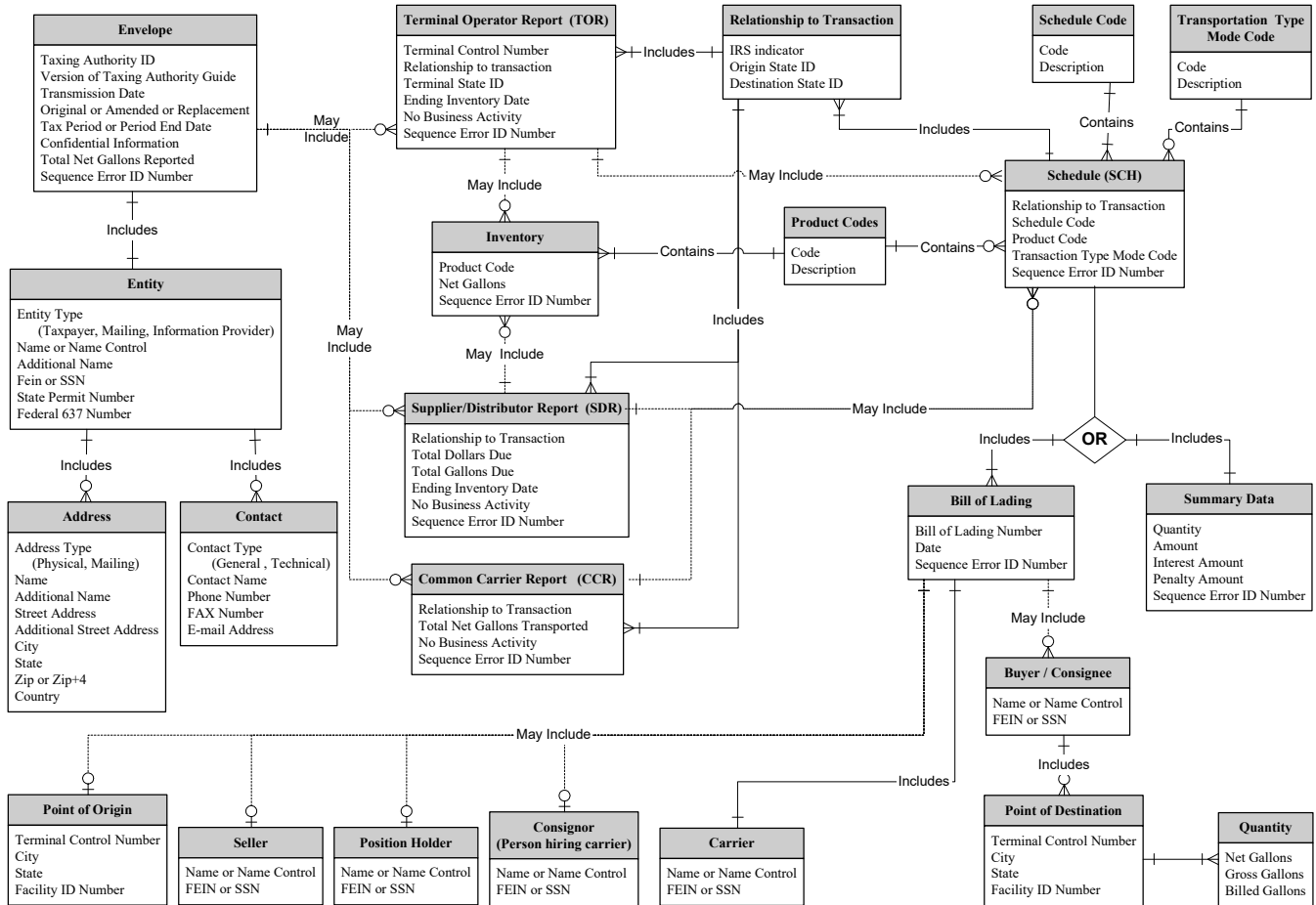
Normally vendors/taxpayers will be able to view messages within 24 hours after transmission of the EDI tax filing. Check the message to determine that the filing was received and whether it passed EDI syntax checks. If the vendor/taxpayer cannot retrieve the message within 24 hours, he should contact the Department. If the message cannot be retrieved within 24 hours it is the vendor/taxpayer's responsibility to follow up and contact the Department.

Please note that receipt of the message only signifies that the EDI tax filing was received by the Department; it does not signify that the electronic return and schedules were an acceptable filing. The electronic return and schedules will be checked further for accuracy. The Department will contact the vendor/taxpayer if there are any questions regarding the return, or if any corrections are required.

## ***FTA Review***

This guide was submitted to the FTA Uniformity Committee for approval and was approved June 10<sup>th</sup>, 2005.

# Chapter 2 - Motor Fuels X12 Data Model



# Chapter 3 – X12 Attribute and Separator Conventions

## Attributes

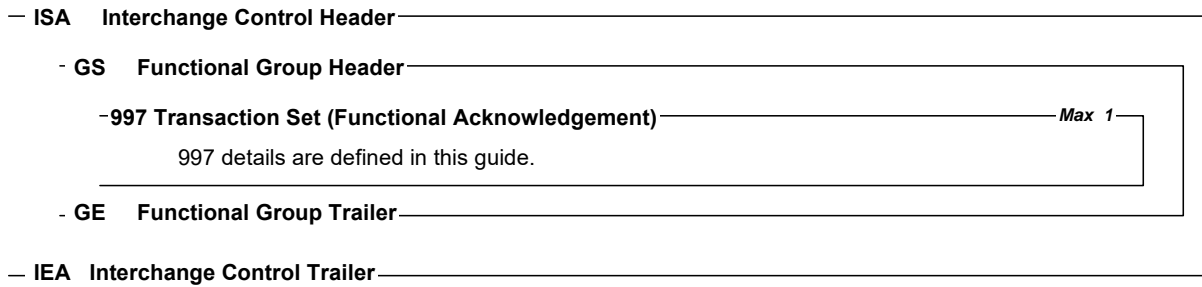
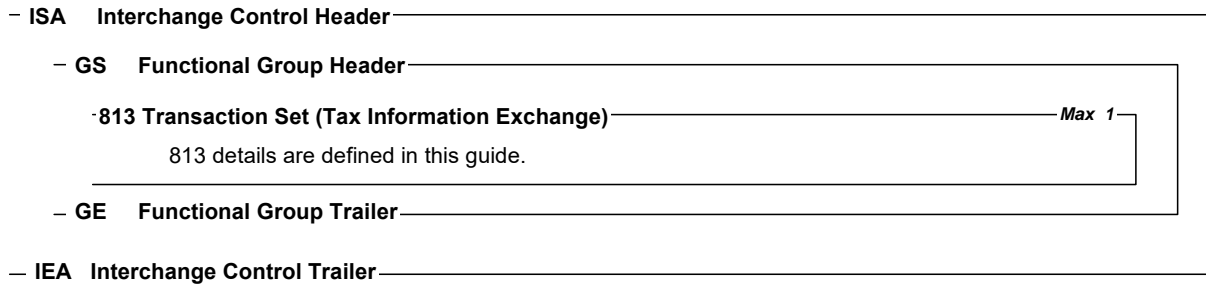
Attribute	Definition
Data Element Type	<p><b>Nn – Numeric</b> Numeric type data element is symbolized by the two-position representation (Nn). N indicates a numeric, and n indicates the decimal places to the right of a fixed, implied decimal point. N0 (N Zero) is a numeric with no decimal places.</p> <p><b>R – Decimal (Real)</b> The decimal point is optional for integer values, but is required for fractional values. For negative values, the leading minus (-) sign is used. Absence of this sign indicates a positive value. The plus (+) sign should not be transmitted.</p> <p><b>ID – Identifier</b> An identifier data element must always contain a value from a predefined list of values that is maintained by ASC X12 or by other bodies that are recognized by ASC X12.</p> <p><b>AN – String</b> A string (Alphanumeric) is a sequence of any characters from the basic or extended character sets. It must contain at least one non-space character. The significant characters must be left justified. Leading spaces, if any, are assumed to be significant. Trailing spaces should be suppressed.</p> <p><b>DT – Date</b> Format for the date type is CCYYMMDD. CC is the century digits of the year (ex. 19, 20). YY is the last two digits of the year (00-99), MM is the numeric value of the month (01-12), and DD for the day (01-31).</p> <p><b>TM – Time</b> Format for the time type is HHMMSS, expressed in 24-hour clock format. HH is the numeric value for hour (00-23), MM for minute (00-59), and SS for second (00-59).</p>
Requirement Designator	<p>Defines how the data element is used in a segment.</p> <p><b>M</b> Mandatory data element - This element is required to appear in the segment.</p> <p><b>O</b> Optional data element - The appearance of this data element is at the option of the sending party or is based on a mutual agreement of the interchange parties.</p> <p><b>X</b> Relational data element - Relational conditions may exist between two or more data elements. If one is present the other/s is required. The relational condition is displayed under the Syntax Noted of the X12 Standards.</p>
Data Element Length	The number of character positions assigned to a data element. Example: Data element length of 2/10. You must have at least 2 characters but no more than 10 characters for this element (minimum of 2/ maximum of 10).
Semantic Note Designator	<p><b>Z – Designator</b> A data element within a segment may have a designator (Z) that indicates the existence of a semantic note. Semantic notes are considered part of the standard. If a condition designator and a semantic note both affect a single data element, the condition will appear first, separated from the semantic note designator by a vertical bar ( ). The number 00 to the left of the comment identifies semantic notes that are general in nature.</p>

## Separator Requirements

Type	ASCII Value	EBCDIC Value	Character	Character Name
Repetition Separator	7C	4F		Pipe
Segment Terminator	5C	E0	\	Back Slash
Element Separator	7E	A1	~	Tilde
Sub-element Separator	5E	5F	^	Caret
Padding Character	20	40	Space	Space

# Chapter 4 – X12 EDI Envelope

## *Envelope Flows*





**Key:**

Not Used	<b>Not used: no data to transmit</b>
Syntax Notes	<b>Note: Notes defined by X12 Standards</b>
FTA Notes	<b>Note: Notes defined by FTA Uniformity</b>
NC Notes	<b>Note: Notes defined by the North Carolina Department of Revenue to further clarify the Department's requirements</b>
Struck-out Text	<b>Text, elements or entire segments that are struck out (example), are part of the Uniform map, but are not used by North Carolina</b>

***Interchange Control Header Description***

Interchange Segment								(Required)
Element ID	Elem Ref #	Sub-Ele Ref#	Field Status	Field Name	Field Type	Length		Field Description
						Min.	Max.	
ISA01	I01		M	Authorization Information Qualifier	ID	2	2	"00" = No Authorization Information Present (No Meaningful Information In Isa02)
ISA02	I02		M	Authorization Information	AN	10	10	Information used for additional identification or authorization of the interchange sender or the data in the interchange. Enter 10 Spaces
ISA03	I03		M	Security Information Qualifier	ID	2	2	"00" = No Security Information Present (No Meaningful Information In ISA 04)
ISA04	I04		M	Security Information	AN	10	10	This is used for identifying the security information about the interchange sender or the data in the interchange. Enter 10 spaces.
ISA05	I05		M	Interchange ID Qualifier	ID	2	2	"ZZ" = ID qualifier published by the sender used to designate the sender ID element being qualified.
ISA06	I06		M	Interchange Sender ID	AN	15	15	Filer FEIN followed by 6 spaces
ISA07	I05		M	Interchange ID Qualifier	ID	2	2	"ZZ" = ID qualifier published by the receiver used to designate the receiver ID element being qualified.
ISA08	I07		M	Interchange Receiver ID	AN	15	15	"NCMOTORFUELS" followed by 3 spaces
ISA09	I08		M	Interchange Date	DT	6	6	"YYMMDD" = Date Of The Interchange
ISA10	I09		M	Interchange Time	TM	4	4	"HHMM" = Time Of The Interchange
ISA11	I65		M	Repetition Separator		1	1	" " = EBCDIC - 4F HEX ASCII - 7C HEX
ISA12	I11		M	Interchange Control Version Number	ID	5	5	"00403"
ISA13	I12		M	Interchange Control Number	N0	9	9	The interchange control number uniquely identifies the interchange data to the sender. The sender assigns this number.
ISA14	I13		M	Acknowledgment Requested	ID	1	1	"0" = No Acknowledgment Required
ISA15	I14		M	Usage Indicator	ID	1	1	"P" = Production Data "T" = Test Data
ISA16	I15		M	Component Sub-Element Separator		1	1	"^" = EBCDIC - 5F HEX ASCII - 5E HEX
ISA~00~ ~00~ ~ZZ~123456789 ~ZZ~NCMOTORFUELS ~031022~0835~  ~00403~00000001~0~T~^\ Syntax Notes: None FTA Note: ISA09 does not include the century based on the ANSI ASC X12 Standard.								

### Functional Group Header Description

Functional Group Segment (Required)								
Element ID	Elem. Ref #	Sub-Ele Ref#	Field Status	Field Name	Field Type	Length		Field Description
						Min.	Max.	
GS01	479		M	Functional Identifier Code	ID	2	2	“TF” for 813 Transaction Set “RA” for 820 Transaction Set “FA” for 997 Transaction Set
GS02	142		M	Application Sender’s Code	AN	2	15	Code identifying party sending transmission. Code assigned by sender and agreed to by trading partner. Filer FEIN
GS03	124		M	Application Receiver’s Code	AN	2	15	Code identifying party receiving transmission. Code assigned by receiving and agreed to by trading partner. “NCMOTORFUELS”
GS04	373		M/Z	Date	DT	8	8	“CCYYMMDD” = Date
GS05	337		M/Z	Time	TM	4	8	“HHMMSSDD” = Time
GS06	28		M/Z	Group Control Number	N0	1	9	Assigned number originated and maintained by the sender.
GS07	455		M	Responsible Agency Code	ID	1	2	“X” = ASC X12
GS08	480		M	Version/ Release / Industry Identifier Code	AN	1	12	“004030”
GS~TF~123456789~NCMOTORFUELS~20031022~0835~1101~X~004030\								
Syntax Notes: None								
FTA Note: None								

813 Electronic Filing of Tax Return Data – see page 5-19  
 997 Functional Acknowledgement – see page 7-66

### Functional Group Trailer Description

Functional Group Segment (Required)								
Element ID	Elem Ref #	Sub-Ele Ref#	Field Status	Field Name	Field Type	Length		Field Description
						Min.	Max.	
GE01	97		M	Number Of Transaction Sets Included	N0	1	6	Count of transaction sets within this GS/GE.
GE02	28		M/Z	Group Control Number	N0	1	9	The data interchange control number in the trailer must be identical to the same data element in the associated functional header (GS06).
GE~1~1101\								
Syntax Notes: None								
FTA Note: None								

### Interchange Control Trailer Description

Interchange Segment (Required)								
Element ID	Elem Ref #	Sub-Ele Ref #	Field Status	Field Name	Field Type	Length		Field Description
						Min.	Max.	
IEA01	I16		M	Number Of Included Functional Groups	N0	1	5	Count of Function Groups Within This ISA/IEA.
IEA02	I12		M	Interchange Control Number	N0	9	9	The interchange number in the trailer must be identical to the same data element in the associated interchange header (ISA13).
IEA~1~00000001\								
Syntax Notes: None								
FTA Note: None								

# Chapter 5 - 813 EDI Combined Reporting

## ANSI ASC X12 - 813 EDI Standard

RELEASE • 004030

TRANSACTION SET TABLES • 813

### 813 Electronic Filing of Tax Return Data

FUNCTIONAL GROUP: TF

This Draft Standard for Trial Use contains the format and establishes the data contents of the Electronic Filing of Tax Return Data Transaction Set (813) for use within the context of an Electronic Data Interchange (EDI) environment. This transaction set can be used by tax filers to electronically file tax returns with a federal, state, or local taxing authority and which may initiate payments related to the tax return.

Table 1

NOTE	POS.NO.	SEG.ID	NAME	REQ.DES.	MAX USE	LOOP REPEAT
	0100	ST	Transaction Set Header	M	1	
	0200	BTI	Beginning Tax Information	M	1	
	0300	DTM	Date/Time Reference	M	10	
N	0400	TIA	Tax Information and Amount	O	1000	
	0430	REF	Reference Identification	O	10	
	0450	TRN	Trace	O	1000	
	0470	BPR	Beginning Segment for Payment Order/Remittance Advice	O	1000	
<b>LOOP ID - N1</b>						>1
N	0500	N1	Name	O	1	
	0600	N2	Additional Name Information	O	2	
	0700	IN2	Individual Name Structure Components	O	10	
	0800	N3	Address Information	O	2	
	0900	N4	Geographic Location	O	1	
	1000	PER	Administrative Communications Contact	O	2	

Table 2

NOTE	POS.NO.	SEG.ID	NAME	REQ.DES.	MAX USE	LOOP REPEAT
<b>LOOP ID - TFS</b>						100000
	0100	TFS	Tax Form	O	1	
	0200	REF	Reference Identification	O	10	
	0300	DTM	Date/Time Reference	O	10	
	0400	MSG	Message Text	O	1000	
<b>LOOP ID - N1</b>						>1
N	0500	N1	Name	O	1	
	0600	N2	Additional Name Information	O	2	
	0700	IN2	Individual Name Structure Components	O	10	
	0800	N3	Address Information	O	2	
	0900	N4	Geographic Location	O	1	
<b>LOOP ID - TIA</b>						10000
N	0920	TIA	Tax Information and Amount	O	1	
	0940	DTM	Date/Time Reference	O	10	
	0960	MSG	Message Text	O	1000	
<b>LOOP ID - FGS</b>						100000
	1000	FGS	Form Group	O	1	
	1100	REF	Reference Identification	O	10	
	1200	DTM	Date/Time Reference	O	10	
<b>LOOP ID - N1</b>						>1
N	1300	N1	Name	O	1	

DECEMBER 1999

1

<sup>1</sup> Data Interchange Standards Association, Inc. (DISA)

813 • TRANSACTION SET TABLES

RELEASE • 004030

1400	<b>N2</b>	Additional Name Information	O	2	
1500	<b>IN2</b>	Individual Name Structure Components	O	10	
1600	<b>N3</b>	Address Information	O	2	
1700	<b>N4</b>	Geographic Location	O	1	
<b>LOOP ID - TIA</b>					<b>10000</b>
N	1800	<b>TIA</b> Tax Information and Amount	O	1	
	1900	<b>DTM</b> Date/Time Reference	O	10	
	2000	<b>MSG</b> Message Text	O	1000	

**Table 3**

NOTE	POS.NO.	SEG.ID	NAME	REQ.DES.	MAX USE	LOOP REPEAT
	0100	<b>SE</b>	Transaction Set Trailer	M	1	
Changes loop repeat value in table/positions 1/0500, 2/0500 and 2/1300.						6   205299

**NOTES**

- 1/0400 The TIA segment allows for tax information and amounts associated with the entire filing. At least one occurrence of the TIA segment must be present in the transaction set, either in Table 1 or Table 2.
- 1/0500 This N1 loop reflects names and addresses associated with the entire filing.
- 2/0500 This N1 loop reflects names and addresses associated with a particular tax form (TFS).
- 2/0920 At least one occurrence of the TIA segment must be present in the transaction set, either in Table 1 or Table 2.
- 2/1300 This N1 loop reflects names and addresses associated with a particular subset of a tax form.
- 2/1800 At least one occurrence of the TIA segment must be present in the transaction set, either in Table 1 or Table 2.

<sup>2</sup> Data Interchange Standards Association, Inc. (DISA)

## 813 Structure

Struck-out Text

Text, elements or entire segments that are struck out (**example**), are part of the Uniform map, but are not used by North Carolina

Table 1

Pos No	Uniform 813 Map	Header
0100	ST	Transaction Set Header
0200	BTI	Identify Tax Agency Information
0300	DTM	Tax Filing Period
0400	TIA	Version of Taxing Authority's Implementation Guide
0400	TIA	Confidential Information
0400	TIA	Total Net Reported
0430	REF	Sequence ID Number
0500	N1	Taxpayer Name Detail
0600	N2	Additional Taxpayer Name Detail
0800	N3	Address Detail
0900	N4	City, State, Zip Code Detail
1000	PER	General Contact Person
1000	PER	EDI Contact Person
0500	N1	Mailing Name Detail
0600	N2	Additional Mailing Name Detail
0800	N3	Mailing Address Detail
0900	N4	Mailing City State Zip Code Detail

Table 2

Pos No	Uniform 813 Map	TOR	SDR	CCR	SUM	SCH
0100	TFS	Terminal Operator Report	Supplier/Distributor Report	Common Carrier Report	Summary Information	Schedules
0200	<del>REF</del>	<del>Relationship to the Transaction</del>	<del>Relationship to the Transaction</del>	<del>Relationship to the Transaction</del>	<del>Relationship to the Transaction</del>	<del>Relationship to the Transaction</del>
0200	REF	Sequence ID Number	Sequence ID Number	Sequence ID Number	Sequence ID Number	Sequence ID Number
0200	REF	No Activity	No Activity	No Activity		
0300	<del>DTM</del>	<del>Sold/Purchase Date</del>				
0300	DTM	Ending Inventory Date	<del>Ending Inventory Date</del>			
0500	N1					Point of Origin
0500	N1					Seller Information
0500	N1					Position Holder Information/ <del>Delivering Exchange Party</del>
0500	N1					<del>Receiving Exchange Partner Information</del>
0500	N1					Person Hiring Carrier (Consignor)
0500	N1					Carrier Information
0500	N1					Buyer/Consignee Information
0500	N1					Point of Destination
0920	TIA	Total Due	Total Due	Total Delivered		
1000	FGS	Physical Inventory by Product	<del>Physical Inventory by Product</del>		Summary Data	Bill of Lading
1100	REF	Sequence ID Number	Sequence ID Number		Sequence ID Number	Sequence ID Number
1200	DTM					Bill of Lading Date
1800	TIA	Physical Inventory	<del>Physical Inventory</del>		Information	Bill of Lading Net
1800	TIA				Interest	Bill of Lading Gross
1800	TIA				Penalty	Bill of Lading Billed

Table 3

Pos No	Uniform 813 Map	Trailer
0100	SE	Transaction Set Trailer

# 813 Map Flow

- 0100	ST	Transaction Set Header (TS 813)		Max 1
0200	BTI	Identify Tax Agency Information		
0300	DTM	Tax Filing Period		
0400	TIA	Version of Taxing Authority's Implementation Guide		
0400	TIA	Confidential Information		
0400	TIA	Total Net Reported		
0430	REF	Sequence Error ID Number		
-0500	N1 Loop	Taxpayer Name Detail		Max 1
0600	N2	Additional Taxpayer Name Detail		
0800	N3	Address Detail		
0900	N4	City, State, Zip Code Detail		
1000	PER	General Contact Person		
1000	PER	EDI Contact Person		
-0500	N1 Loop	Mailing Name Detail		Max 1
0600	N2	Additional Mailing Name Detail		
0800	N3	Mailing Address Detail		
0900	N4	Mailing City, State, Zip Code Detail		
• 0100	TFS Loop	Terminal Operator Report (TOR)		
0200	REF	Relationship to the Transaction Information		
0200	REF	Sequence Error ID Number		
0200	REF	No Activity		
0300	DTM	Ending Inventory Date		
-1000	FGS Loop	Physical Inventory by Product		Max 100,000
1100	REF	Sequence Error ID Number		
1800	TIA	Physical Inventory		
• 0100	TFS Loop	Supplier/Distributor Report (SDR)		
0200	REF	Relationship to the Transaction Information		
0200	REF	Sequence Error ID Number		
0200	REF	No Activity		
0300	DTM	Ending Inventory Date		
0920	TIA	Total Due		
-1000	FGS Loop	Line Items From Face of Return not Derived From Schedules		Max 100,000
1100	REF	Sequence Error ID Number		
1800	TIA	Line Item Detail		
• 0100	TFS Loop	Common Carrier Report (CCR)		
0200	REF	Relationship to the Transaction Information		
0200	REF	Sequence Error ID Number		
0200	REF	No Activity		
0920	TIA	Total Delivered		
• 0100	TFS Loop	Summary Information		
0200	REF	Relationship to the Transaction information		
0200	REF	Sequence Error ID Number		
-1000	FGS Loop	Summary Data		Max 100,000
1100	REF	Sequence Error ID Number		
1800	TIA	Information		
1800	TIA	Interest		
1800	TIA	Penalty		
• 0100	TFS Loop	Schedules		
0200	REF	Relationship to the Transaction information		
0200	REF	Sequence Error ID Number		
0500	N1	Point of Origin		
0500	N1	Seller Information		
0500	N1	Position Holder Information		
0500	N1	Person Hiring Carrier (Consignor)		
0500	N1	Carrier Information		
0500	N1	Buyer/Consignee Information		
0500	N1	Point of Destination		
-1000	FGS Loop	Bill Lading		Max 100,000
1100	REF	Sequence Error ID Number		
1200	DTM	Bill of Lading Date		
1800	TIA	Bill of Lading Net		
1800	TIA	Bill of Lading Gross		
1800	TIA	Bill of Lading Billed		
-0100	SE	Transaction Set Trailer		

Maximum Number of TFS Loops = 100,000

## 813 Map/Envelope Structure

One or more 813 transaction sets can be included within an ISA/GS envelope. An ISA/GS envelope may contain all 813 transactions or all 820 transactions; different transaction sets may not be mixed in an envelope.

## Key:

Not Used	<b>Not used: no data to transmit</b>
Syntax Notes	Note: Notes defined by X12 Standards
FTA Notes	Note: Notes defined by FTA Uniformity
NC Notes	Note: Notes defined by the North Carolina Department of Revenue to further clarify the Department's requirements
Struck-out Text	Text, elements or entire segments that are struck out ( <b>example</b> ), are part of the Uniform map, but are not used by North Carolina

**Transaction Set Header Description**

Beginning of Transaction Set Header Segment								(Required) Pos. No. 0100	
Element ID	Elem Ref #	Sub-Ele Ref #	Field Status	Field Name	Field Type	Length		Field Description	
						Min	Max		
ST01	143		M	Transaction Set Code	ID	3	3	Transaction Set Type "813"	
ST02	329		M	Transaction Set Control Number	AN	4	9	Filer defined unique control number (same value as SE02)	
ST03	1705		O/Z	Implementation Convention Reference	AN	1	5	Version of Taxing Authority's implementation Guide "1.0" = North Carolina Version	
ST~813~1001~1.0\									
Syntax Notes: None									
FTA Note: It is recommended that the ST03 be used to help identify which implementation guide the trading partner is using. This element will help the receiver of the data determine if the sender is using an old guide or the most current guide for the data transmission.									
NC Notes: North Carolina requires use of ST03									

Identify Tax Agency Information Begin Tax Information Segment								(Required) Pos. No. 0200	
Element ID	Elem Ref #	Sub-Ele Ref #	Field Status	Field Name	Field Type	Length		Field Description	
						Min	Max		
BTI01	128		M	Reference Number Qualifier	ID	2	2	"T6" = Defines as Tax Filing	
BTI02	127		M	Reference Number	AN	3	3	Determined by FTA "050" = All Fuels Tax Filings	
BTI03	66		M	ID Code Qualifier	ID	2	2	"47" = Tax Authority	
BTI04	67		M	ID Code	AN	2	20	Determined by Tax Authority "NCMOTORFUELS"	
BTI05	373		O	Transaction Create Date	DT	8	8	"CCYYMMDD" = Transmission Date	
BTI06	818		O	Name Control ID	AN	4	4	First 4 positions of Taxpayer's Legal Business Name. If business name is less than 4 characters, left justify name control and pad with "**".	
BTI07	66		X	ID Code Qualifier	ID	2	2	"24" = FEIN Federal Employer Identification Number "34" = Social Security Number "50" = Canadian Business Number	
BTI08	67		X	ID Code	AN	9	18	Taxpayer's FEIN or SSN or Canadian Business Number	
BTI09	66		X	ID Code Qualifier	ID	2	2	"49" = State (assigned) Identification Number	
BTI10	67		X	ID Code	AN	2	20	License or Permit Number	
BTI11	66		X	ID Code Qualifier	ID	2	2	"SV" = Electronic Filer ID Number	
BTI12	67		X	ID Code	AN	9	15	State assigned Software Identification	
BTI13	353		O	Transaction Set Purpose Code	ID	2	2	Original Filing Options: "00" = Original	
BTI14	640		O	Transaction Type Code	ID	2	2	Amended Filing Options:	



										"6S" = Supplemental "CO" = Corrected
BTI~T6~050~47~NCMOTORFUELS~20010523~ABCD~24~516999988~49~1234~SV~xxxxxxxx~00\										
Syntax Notes: If either BTI07 or BTI08 is present, then the other is required. If either BTI09 or BTI10 is present, then the other is required. If either BTI11 or BTI12 is present, then the other is required.										
FTA Notes:  BTI07 must be the FEIN if the taxpayer has one. Submit a SSN only for sole proprietorships that have not been issued a FEIN.  The application of BTI13 and BTI14 are as follows: BTI13 should be used when the taxpayer transmits their initial return (BTI13 should be used without BTI14); BTI14 should be used when the taxpayer transmits modifications (BTI14 should be used without BTI13). This is a recommendation of the Motor Fuel Uniformity Committee, not a requirement of X12. Further clarification of these elements is located below.										
<b>Element</b>		<b>Application</b>								
BTI13 [Initial Return]										
"00" = Original		Use "Original" when first attempting to transmit your return to the department whether the return is received or not. Always use "00" until the original return is received.								
<del>"05" = Replace</del>		<del>Use "Replace" when first attempt of transmitted return had corrupted data.</del>								
<del>"15" = Resubmission</del>		<del>Use "Resubmission" when the Department did not receive first attempt of your transmitted return.</del>								
BTI14 [Amended Return]										
"CO" = Corrected		Use "Corrected" when adjusting or correcting original or amended return.								
<del>"6R" = Resubmission</del>		<del>Use "Resubmission" when first attempt to transmit amended return was not received by the Department.</del>								
"6S" = Supplemental		Use "Supplemental" when transmitting new or additional data not included in original or amended return.								
NC Notes: The software provider code (BIT12) will be assigned by the state. Software vendors should contact the Department's EDI Coordinator (See the Contact Information Section) to request a software provider code. Filers who develop their own software may leave the BTI11 and BTI12 blank.										

<b>Tax Filing Period</b>										<b>(Required)</b>
<b>Date/Time Reference Segment</b>										<b>Pos. No. 0300</b>
Element ID	Elem Ref #	Sub-Ele Ref #	Field Status	Field Name	Field Type	Length		Field Description		
						Min	Max			
DTM01	374		M	Date/Time Qualifier	ID	3	3	"194" = Tax Period End Date		
DTM02	373		X	Date	DT	8	8	"CCYYMMDD" = Tax Filing Period End		
<b>DTM03 and DTM04 are not used.</b>										
DTM05	1250		X	Date Time Period Format Qualifier	ID	3	3	"RD8" = Range of Dates		
DTM06	1251		X	Date Time Period	AN	17	17	"CCYYMMDD-CCYYMMDD" = Tax Filing Period Beginning and Ending Dates.		
DTM~194~20051031\										
Syntax Notes: At least one of DTM02 or DTM05 is required. If either DTM05 or DTM06 is present, then the other is required.										
FTA Notes: If qualifier "194" is used in DTM01, then DTM05 and DTM06 are not used. If qualifier "683" is used in DTM01, then DTM02 is not used.										
NC Notes: DTM02 Tax Period end date is required										

<b>Confidential Data</b>										
<b>Tax Information and Amount Segment</b>										<b>Pos. No. 0400</b>
Element ID	Elem Ref #	Sub-Ele Ref #	Field Status	Field Name	Field Type	Length		Field Description		
						Min	Max			
TIA01	817		M	Tax Information Code	AN	4	4	"5010" = Confidential Information		
<b>TIA02 is not used.</b>										
TIA03	449		X	Fixed Format Information	AN	4	5	User defined: Example: "6103" = IRS 6103B Tax data.		
TIA~5010~6103\										
Syntax Notes: TIA03 is required.										
FTA Notes: This segment is used only between the states and the IRS										

Total Net Reported Tax Information and Amount Segment										Pos. No. 0400
Element ID	Elem Ref #	Sub-Ele Ref #	Field Status	Field Name	Field Type	Length		Field Description		
						Min	Max			
TIA01	817		M	Tax Information Code	AN	4	4	"5001" = Total Net Reported		
<b>TIA02 and TIA03 are not used.</b>										
TIA04	380		X	Quantity	R	1	15	Total Number of Net Gallons in Tax Filing		
TIA05	355		M	Unit of Measurement Code	ID	2	2	"GA" = Gallons		
<b>TIA~5001~~~1000000~GA\</b>										
Syntax Notes: TIA04 is required. If TIA05 is present, then TIA04 is required.										
FTA Notes: Even though this value can be calculated, it is included, as a control figure to verify that the amount calculated by the Tax Authority is the same as expected by the taxpayer.										
NC Notes: This is the sum of net gallons (+/-) across all schedules in the tax filing										

Sequence ID Number Reference Number Segment										Pos. No. 0200
Element ID	Elem Ref #	Sub-Ele Ref #	Field Status	Field Name	Field Type	Length		Field Description		
						Min	Max			
REF01	128		M	Reference Identification Qualifier	ID	2	2	"FJ" = Sequence ID Number		
REF02	127		X	Reference Identification	AN	1	9	Sequence Number		
REF03	352		X	Description	AN	1	5	Error Response Code		
<b>REF~55~0001234\</b>										
Syntax Notes: At least one of the REF02 or REF03 is required.										
FTA Notes: This segment is only used when resending to an error reported in the 151 transaction set. REF02 is always required. REF03 is used for responding to an error										

Payment Order Remittance Advice Beginning Segment										(Required) Pos. No. 0200
Element ID	Elem Ref #	Sub-Ele Ref #	Field Status	Field Name	Field Type	Length		Field Description		
						Min	Max			
BPR01	305		M	Transaction Handling Code	ID	1	2	"S" = Single Debit Authorization "P" = Pre-notification		
BPR02	782		M	Monetary Amount	R	1	18	Amount of tax payment		
BPR03	478		M	Credit/Debit Flag Code	ID	1	1	"D" = Debit		
BPR04	591		M	Payment Method Code	ID	3	3	"ACH" = Automated Clearing House		
BPR05	812		M	Payment Format Code	ID	3	3	"CCD" = Cash Contration/Disbursement "CCP" = Cash Concentration/Disbursement _____ plus Addenda (CCD+)		
<b>BPR06 through BPR11 are not inserted by the taxpayer. They are on file with the party that creates the ACH Debit transaction. The taxpayer transmits empty fields for these elements.</b>										
BPR06	506		X/Z	(ODFI) ID Number Qualifier	ID	2	2	"01" = ABA Transit Routing Number and Check Digits		
BPR07	507		X	(ODFI) Identification Number	AN	3	12	State's Bank Routing and Transit Number		
BPR08	569		O/Z	(ODFI) Account Number Qualifier	ID	1	3	"DA" = Demand Deposit "SG" = Savings		
BPR09	508		X/Z	(ODFI) Account Number	AN	1	35	State's Bank Account Number to be Credited		
BPR10	509		O	Originating Company Identifier	AN	10	10	State ID Example: Taxing Authority's DUNS Number		
BPR11	510		O	Originating Company Supplemental Code	O	9	9	Code Identifying Fiscal Agent		
BPR12	506		X/Z	(RDFI) ID Number Qualifier	ID	2	2	"01" = ABA Transit Routing Number and Check Digits		
BPR13	507		X	(RDFI) Identification Number	AN	3	12	Taxpayer's Bank Routing and Transit Number		
BPR14	569		O/Z	(RDFI) Account Number Qualifier	ID	1	3	"DA" = Demand Deposit "SG" = Savings		
BPR15	508		X/Z	(RDFI) Account Number	AN	1	35	Taxpayer's Bank Accounted to be Debited		
BPR16	373		O/Z	Date	DT	8	8	The intended payment effective date (CCYYMMDD)		
BPR17	1048		O/Z	Business Function Code	ID	1	3	"TAX" = Tax Payment		

<del>BPR-S-500-D-ACH-CCD-----01-123456789-DA-987654321-20010325-TAX\</del>	
<b>Syntax Notes:</b>	<b>If either BPR06 or BPR07 is present, then the other is required.</b> <b>If BPR08 is present, then BPR09 is required.</b> <b>If either BPR12 or BPR13 is present, then the other is required.</b> <b>If BPR14 is present, then BPR15 is required.</b>
<b>FTA Notes:</b>	<b>This segment should not be mandated by a taxing authority</b>
	<b>ODFI (Originating Depository Financial Institution) is the bank that creates the ACH transaction. For debit transactions, this is the state's Bank.</b>
	<b>RDFI (Receiving Depository Financial Institution) is the bank that accepts the ACH transaction. For debit transactions, this is the Taxpayer's Bank.</b>

<b>Name Detail</b>									
<b>Name Segment</b>									
<b>Pos. No. 0500</b>									
Element ID	Elem Ref #	Sub-Ele Ref #	Field Status	Field Name	Field Type	Length		Field Description	
						Min	Max		
N101	98		M	Entity Identification Code	ID	2	2	"TP" = Primary Taxpayer	
N102	93		X	Name	AN	1	35	Taxpayer Name	
N1~TP~ABC Distributing\									
<b>Syntax Notes:</b> N102 is required.									
<b>FTA Note:</b> N101: Use "TP" for tax reporting, or "L9" for information reporting.									
<b>NC Notes:</b> This segment is required									

<b>Additional Taxpayer Name Detail</b>									
<b>Additional Name Segment</b>									
<b>Pos. No. 0600</b>									
Element ID	Elem Ref #	Sub-Ele Ref #	Field Status	Field Name	Field Type	Length		Field Description	
						Min	Max		
N201	93		M	Name	AN	1	35	Taxpayer Name	
N202	93		O	Name	AN	1	35	Taxpayer Name	
N2~ABC Fuel Company~ABC Station\									
<b>Syntax Notes:</b> None									
<b>FTA Note:</b> None									

<b>Address Detail</b>									
<b>Address Information Segment</b>									
<b>Pos. No. 0800</b>									
Element ID	Elem Ref #	Sub-Ele Ref #	Field Status	Field Name	Field Type	Length		Field Description	
						Min	Max		
N301	166		M	Address Information	AN	1	35	First Line Street Address	
N302	166		O	Address Information	AN	1	35	Second Line Street Address	
N3~123 Center Street~Suite A\									
<b>Syntax Notes:</b> None									
<b>FTA Note:</b> None									
<b>NC Notes:</b> This segment is required									

<b>City, State, Zip Code Detail</b>									
<b>Location Geographic Segment</b>									
<b>Pos. No. 0900</b>									
Element ID	Elem Ref #	Sub-Ele Ref #	Field Status	Field Name	Field Type	Length		Field Description	
						Min	Max		
N401	19		M	City Name	AN	2	30	Name of City	
N402	156		M	State code or Province	ID	2	2	State or Province Abbreviation	
N403	116		O	Postal (Zip) Code	ID	3	11	ZIP Code, ZIP Plus 4 Code or Foreign Postal code	
N404	26		O	Country	ID	2	3	Country Abbreviation (United States = US)	
N4~Charlotte~NC~12345~2222~US\									
<b>Syntax Notes:</b> None									
<b>FTA Note:</b> None									
<b>NC Notes:</b> This segment is required									

General Contact Person									
Administrative Communications Contact Segment									Pos. No. 1000
Element ID	Elem Ref #	Sub-Ele Ref #	Field Status	Field Name	Field Type	Length		Field Description	
						Min	Max		
PER01	366		M	Contact Function Code	ID	2	2	Contact Type Code: "CN" = General Contact	
PER02	93		M	Name	AN	1	35	Contact Name	
PER03	365		X	Communications Number Qualifier	ID	2	2	"TE" = Telephone Number	
PER04	364		X	Communications Number	AN	10	14	Voice Telephone Number	
PER05	365		X	Communications Number Qualifier	ID	2	2	"FX" = FAX Number	
PER06	364		X	Communications Number	AN	10	10	FAX Telephone Number	
PER07	365		X	Communications Number Qualifier	ID	2	2	"EM" = Electronic Mail	
PER08	364		X	Communications Number	AN	1	80	E-mail Address	
<b>PER~CN~Donna Smith~TE~7015559988~FX~7015559977~EM~DSmith@OilCo.com\</b>									
<b>Syntax Notes: If either PER03 or PER04 is present, then the other is required. If either PER05 or PER06 is present, then the other is required. If either PER07 or PER08 is present, then the other is required.</b>									
<b>FTA Note: None</b>									
<b>NC Notes: This segment is required.</b>									

EDI Contact Person									
Administrative Communications Contact Segment									Pos. No. 1000
Element ID	Elem Ref #	Sub-Ele Ref #	Field Status	Field Name	Field Type	Length		Field Description	
						Min	Max		
PER01	366		M	Contact Function Code	ID	2	2	Contact Type Code: "EA" = EDI Coordinator	
PER02	93		M	Name	AN	1	35	Contact Name	
PER03	365		X	Communications Number Qualifier	ID	2	2	"TE" = Telephone Number	
PER04	364		X	Communications Number	AN	10	14	Voice Telephone Number	
PER05	365		X	Communications Number Qualifier	ID	2	2	"FX" = FAX Number	
PER06	364		X	Communications Number	AN	10	10	FAX Telephone Number	
PER07	365		X	Communications Number Qualifier	ID	2	2	"EM" = Electronic Mail	
PER08	364		X	Communications Number	AN	1	80	E-mail Address	
<b>PER~EA~John Smith~TE~7015559988~FX~7015559988~EM~JSmith@OilCo.com \</b>									
<b>Syntax Notes: If either PER03 or PER04 is present, then the other is required. If either PER05 or PER06 is present, then the other is required. If either PER07 or PER08 is present, then the other is required.</b>									
<b>FTA Note: None</b>									
<b>NC Notes: This segment is required.</b>									

The following segments are required if the mailing address is different than the physical address.

Mailing Name Detail									
Name Segment									Pos. No. 0500
Element ID	Elem Ref #	Sub-Ele Ref #	Field Status	Field Name	Field Type	Length		Field Description	
						Min	Max		
N101	98		M	Entity Identification Code	ID	2	2	"31" = Postal Mailing	
N102	93		X	Name	AN	1	35	Mailing Name	
N1~31~ABC Company\									
Syntax Notes: N102 is required.									
FTA Note: None									

Mailing Additional Name Detail									
Additional Name Segment									Pos. No. 0600
Element ID	Elem Ref #	Sub-Ele Ref #	Field Status	Field Name	Field Type	Length		Field Description	
						Min	Max		
N201	93		M	Name	AN	1	35	Mailing Name	
N202	93		O	Name	AN	1	35	Mailing Name	
N2~ABC Fuel Company~ABC Subsidiary\									
Syntax Notes: None									
FTA Note: None									

Mailing Address Detail									
Address Information Segment									Pos. No. 0800
Element ID	Elem Ref #	Sub-Ele Ref #	Field Status	Field Name	Field Type	Length		Field Description	
						Min	Max		
N301	166		M	Address Information	AN	1	35	First Line Street Address	
N302	166		O	Address Information	AN	1	35	Second Line Street Address	
N3~123 Center Street~P.O Box 17\									
Syntax Notes: None									
FTA Note: None									

Mailing City, State, Zip Code Detail									
Location Geographic Segment									Pos. No. 0900
Element ID	Elem Ref #	Sub-Ele Ref #	Field Status	Field Name	Field Type	Length		Field Description	
						Min	Max		
N401	19		M	City Name	AN	2	30	Name of City	
N402	156		M	State code or Province	ID	2	2	State or Province Abbreviation	
N403	116		O	Postal (Zip) Code	ID	3	11	ZIP Code, ZIP Plus 4 Code or Foreign Postal code	
N404	26		O	Country	ID	2	3	Country Abbreviation (United States = US)	
N4~Charlotte~NC~12345~2222~US\									
Syntax Notes: None									
FTA Note: None									

End of Transaction Set Header

## Transaction Set - Terminal Operator Report (TOR)

This TFS loop reports information on the TOR. Transaction detail is reported using the Schedule section of this map.

The TFS loop is repeated when reporting information for each terminal reported. Repeat the FGS loop within the TFS loop for each product reported.

Beginning of Terminal Operator Report									
Tax Form Segment									Pos. No. 0100
Element ID	Elem Ref. #	Sub-Ele Ref. #	Field Status	Field Name	Field Type	Length		Field Description	
						Min	Max		
TFS01	128		M	Reference Identification Qualifier	ID	2	2	"T2" = Tax Form Code	
TFS02	127		M	Reference Identification	AN	1	6	"TOR" = Terminal Operator Report	
TFS03 and TFS04 are not used									
TFS05	66		X	ID Code Qualifier	ID	2	2	"TC" = IRS Terminal Code	
TFS06	67		X	ID Code	AN	9	9	IRS Terminal Control Number (TCN)	
TFS~T2~TOR~~~TC~T99NC0000\									
Syntax Notes: If either TFS05 or TFS06 is present, then the other is required.									
FTA Note: None									

Relationship to the Transaction Information									
Reference Segment									Pos. No. 0200
Element ID	Elem Ref. #	Sub-Ele Ref. #	Field Status	Field Name	Field Type	Length		Field Description	
						Min	Max		
REF01	128		M	Reference Identification Qualifier	ID	2	2	"SU" = Special Processing	
REF02	127		X	Reference Identification	AN	3	3	IRS = IRS Data N/A = If not applicable to the IRS	
REF03 Not used									
REF04	C040	128	M	Reference Identification Qualifier	ID	2	2	"S0" = Special Approval (S Zero)	
REF05	C040	127	M	Reference Identification	AN	2	2	State Abbreviation for state which data belongs to.	
REF06	C040	128	X	Reference Identification Qualifier	ID	2	2	"S0" = Special Approval (S Zero)	
REF07	C040	127	X	Reference Identification	AN	2	2	State abbreviation for state which data belongs to.	
REF~SU~N/A~~S0^NC\									
Syntax Notes: REF02 is required.									
FTA Note: REF02, REF05 and REF07 represent the taxing authorities and their relationship to the information in this TFS loop. REF05 REF07 use the sub-element separator.									

### Sequence ID Number Usage

Sequence ID number is a counter used as a reference point when the Department contacts a filer with a question about the EDI file. The first Sequence ID Number within an envelope (ISA/IEA loop) will start at 1. Every subsequent REF within the ISA/IEA loop will be incremented by 1.

Sequence ID Number									
Reference Number Segment									Pos. No. 0200
Element ID	Elem Ref #	Sub-Ele Ref #	Field Status	Field Name	Field Type	Length		Field Description	
						Min	Max		
REF01	128		M	Reference Identification Qualifier	ID	2	2	"55" = Sequence ID Number	
REF02	127		X	Reference Identification	AN	1	9	Sequence Number	
REF03	352		X	Description	AN	1	5	Error Response Code	
REF~55~0000001\									
Syntax Notes: REF02 is required.									
FTA Notes: REF02 is always required; REF03 is used when responding to an error									
NC Notes: REF03 is not used. See notes on sequence number on page 5-30									

**Condition 1 - If an account has no activity; the following REF segment is required. The following Condition 2 DTM and FGS are not used.**

No Activity Reference Number Segment										(Conditional) Pos. No. 0200
Element ID	Elem Ref #	Sub-Ele Ref #	Field Status	Field Name	Field Type	Length		Field Description		
						Min	Max			
REF01	128		M	Entity Identification Code	ID	2	2	"BE" = Business Activity		
REF02	127		X	Name	AN	1	1	"1" = No Activity		
REF~BE~1\										
Syntax Notes: REF02 is required.										
FTA Note: None										

**Condition 2 - If an account has activity; the following DTM and FGS segments are required. The preceding REF is not used. This FGS loop contains inventory information. The FGS loop repeated when the product code value changes.**

Ending Inventory Date Date/Time Reference Segment										(Conditional) Pos. No. 0300
Element ID	Elem Ref #	Sub-Ele Ref #	Field Status	Field Name	Field Type	Length		Field Description		
						Min	Max			
DTM01	374		M	Date/Time Qualifier	ID	3	3	"184" = Inventory Date		
DTM02	373		X	Date	DT	8	8	"CCYYMMDD"		
DTM~184~20051031\										
Syntax Notes: DTM02 is required.										
FTA Note: None										

Total Due Tax Information and Amount Segment										(Conditional) Pos. No. 0920
Element ID	Elem Ref. #	Sub-Ele Ref. #	Field Status	Field Name	Field Type	Length		Field Description		
						Min	Max			
TIA01	C037	817	M	Tax Information ID Number	AN	4	4	"5003" = Total Due		
TIA02	782		X	Monetary Amount	R	1	15	Dollar Amount		
TIA03 is not used.										
TIA04	380		X	Quantity	R	1	15	Quantity		
TIA05	C001	355	M	Unit of Measurement Code	ID	2	2	"GA" = Gallons		
TIA~5003~~100000~GA\										
Syntax Notes: At least one of TIA02 or TIA04 is required. If TIA05 is present, then TIA04 is required.										
NC Notes: TIA02 Dollar Amount: Line 9 of the GAS-1204: Terminal Operator Return TIA04 Gallons is the sum of net gallons on all schedules for the return										

Physical Inventory by Product Form Group Segment										(Conditional) Pos. No. 1000
Element ID	Elem Ref. #	Sub-Ele Ref. #	Field Status	Field Name	Field Type	Length		Field Description		
						Min	Max			
FGS01	350		M	Assigned Identification	AN	2	2	"EI" = Ending Inventory		
FGS02	128		X	Reference Identification Qualifier	ID	2	2	"PG" = Product Group		
FGS03	127		X	Reference Identification	AN	3	3	Product Code See Appendix on page D-78		
FGS~EI~PG~065\										
Syntax Notes: If either FGS02 or FGS03 is present, then the other is required.										
FTA Note: None										
NC Notes: Inventory is required for in-state terminals only.										

Sequence ID Number									
Reference Number Segment									Pos. No. 0200
Element ID	Elem Ref #	Sub-Ele Ref #	Field Status	Field Name	Field Type	Length		Field Description	
						Min	Max		
REF01	128		M	Reference Identification Qualifier	ID	2	2	"55" = Sequence ID Number	
REF02	127		X	Reference Identification	AN	1	9	Sequence Number	
REF03	352		X	Description	AN	4	5	Error Response Code	
REF~55~0001234\									
Syntax Notes: REF02 is required.									
FTA Notes: REF02 is always required; REF03 is used when responding to an error									
NC Notes: REF03 is not used. See notes on sequence number on page 5-30									

Inventory										(Required if FGS is Used)
Tax Information and Amount Segment									Pos. No. 1800	
Element ID	Elem Ref. #	Sub-Ele Ref. #	Field Status	Field Name	Field Type	Length		Field Description		
						Min	Max			
TIA01	817		M	Tax Information ID Number	AN	4	4	"5002" = Net Physical Inventory		
TIA02 and TIA03 are not used.										
TIA04	380		X	Quantity	R	1	15	Quantity		
TIA05	355		M	Unit of Measurement Code	ID	2	2	"GA" = Gallons		
TIA~5002~~~10000~GA\										
Syntax Notes: If TIA05 is present, then TIA04 is required.										
FTA Note: Physical Inventory is the only value passed. All other information is derivable from schedules.										

End of FGS loop (Line item detail)

End of TFS loop (TOR detail)



## Transaction Set - Supplier/Distributor Report (SDR)

This TFS loop reports information on the SDR. Transaction detail is reported using the Summary Information and Schedule sections of this map.

Beginning of Supplier/Distributor Report Detail										Pos. No. 0100
Tax Form Segment										
Element ID	Elem Ref. #	Sub-Ele Ref. #	Field Status	Field Name	Field Type	Length		Field Description		
						Min	Max			
TFS01	128		M	Reference Identification Qualifier	ID	2	2	"T2" = Tax Form Code		
TFS02	127		M	Reference Identification	AN	1	6	"SDR" = Supplier/Distributor Report		
<b>TFS~T2~SDR\</b>										
<b>Syntax Notes:</b> None										
<b>FTA Note:</b> The TFS loop is used once when reporting information for the SDR. Repeat the FGS loop within the TFS loop for each product reported.										

Relationship to the Transaction Information										Pos. No. 0200
Reference Segment										
Element ID	Elem Ref. #	Sub-Ele Ref. #	Field Status	Field Name	Field Type	Length		Field Description		
						Min	Max			
REF01	128		M	Reference Identification Qualifier	ID	2	2	"SU" = Special Processing		
REF02	127		X	Reference Identification	AN	3	3	IRS = IRS Data		
<b>REF03 Not used</b>										
REF04	C040	128	M	Reference Identification Qualifier	ID	2	2	"S0" = Special Approval (S Zero)		
REF05	C040	127	M	Reference Identification	AN	2	2	State Abbreviation for state which data belongs to.		
REF06	C040	128	X	Reference Identification Qualifier	ID	2	2	"S0" = Special Approval (S Zero)		
REF07	C040	127	X	Reference Identification	AN	2	2	State abbreviation for state which data belongs to.		
<b>REF~SU~N/A~S0^NC\</b>										
<b>Syntax Notes:</b> At least one of REF02 or REF03 is required.										
<b>FTA Note:</b> REF02, REF05 and REF07 represent the taxing authorities and their relationship to the information in this TFS loop. REF05 - REF07 use the sub element separator.										

Sequence ID Number										Pos. No. 0200
Reference Number Segment										
Element ID	Elem Ref #	Sub-Ele Ref #	Field Status	Field Name	Field Type	Length		Field Description		
						Min	Max			
REF01	128		M	Reference Identification Qualifier	ID	2	2	"55" = Sequence ID Number		
REF02	127		X	Reference Identification	AN	1	9	Sequence Number		
REF03	352		X	Description	AN	1	5	Error Response Code		
<b>REF~55~0001234\</b>										
<b>Syntax Notes:</b> REF02 is required.										
<b>FTA Notes:</b> REF02 is always required; REF03 is used when responding to an error										
<b>NC Notes:</b> REF03 is not used. See notes on sequence number on 5-30										

Condition 1 - If an account has no activity this segment is required. The Condition 2 DTM, TIA and FGS Loop are not used.

No Activity										(Conditional)
Reference Number Segment										Pos. No. 0200
Element ID	Elem Ref #	Sub-Ele Ref #	Field Status	Field Name	Field Type	Length		Field Description		
						Min	Max			
REF01	128		M	Entity Identification Code	ID	2	2	"BE" = Business Activity		
REF02	127		X	Name	AN	1	1	"1" = No Activity		
<b>REF~BE~1\</b>										
<b>Syntax Notes:</b> REF02 is required.										
<b>FTA Notes:</b> None										

Condition 2 – If an account has activity; at least the TIA (Total Due) segment is required. The Condition 1 REF is not used. The FGS loop contains inventory information by product. The FGS loop repeats when the product code value changes.

Ending Inventory Date (Conditional)									
Date/Time Reference Segment Pos. No. 0300									
Element ID	Elem Ref #	Sub-Ele Ref #	Field Status	Field Name	Field Type	Length		Field Description	
						Min	Max		
DTM01	374		M	Date/Time Qualifier	ID	3	3	"184" – Inventory Date	
DTM02	373		X	Date	DT	8	8	"CCYYMMDD"	
<del>DTM~184~20051031\</del>									
Syntax Notes: DTM02 is required.									
FTA Notes: Use this segment when reporting ending inventory in the FGS Loop for the supplier/distributor.									

Total Due (Conditional)									
Tax Information and amount Segment Pos. No. 0920									
Element ID	Elem Ref #	Sub-Ele Ref #	Field Status	Field Name	Field Type	Length		Field Description	
						Min	Max		
TIA01	817		M	Tax Information ID Number	AN	4	4	"5003" = Total Due	
TIA02	782		X	Monetary Amount	R	1	15	Dollar Amount	
TIA03 is not used.									
TIA04	380		X	Quantity	R	1	15	Quantity	
TIA05	355		M	Unit of Measurement Code	ID	2	2	"GA" = Gallons	
<del>TIA~5003~153.75~25000~GA\</del>									
Syntax Notes: At least one of TIA02 or TIA04 is required. If TIA05 is present, then TIA04 is required.									
FTA Notes: Total Due is passed as a check value and represents dollars and/or quantity.									
NC Notes: Formatting of TIA02: TIA02 is the total amount due from Line 23 of GAS-1202: Motor Fuel Supplier Tax Return TIA04 is the sum of net gallons on all schedules for the return									

Physical Inventory by Product (Conditional)									
Form Group Segment Pos. No. 1000									
Element ID	Elem Ref #	Sub-Ele Ref #	Field Status	Field Name	Field Type	Length		Field Description	
						Min	Max		
FGS01	350		M	Assigned Identification	AN	2	2	"EI" – Ending Inventory	
FGS02	128		X	Reference Identification Qualifier	ID	2	2	"PG" – Product Group	
FGS03	127		X	Reference Identification	AN	3	3	Product Code	
<del>FGS~EI~PG~065\</del>									
Syntax Notes: If either FGS02 or FGS03 is present, then the other is required.									
FTA Notes: This FGS allows looping to report inventory by product. Repeat this loop (a single TIA per FGS) as many times as needed to complete reporting requirements.									

Sequence ID Number (Conditional)									
Reference Number Segment Pos. No. 0200									
Element ID	Elem Ref #	Sub-Ele Ref #	Field Status	Field Name	Field Type	Length		Field Description	
						Min	Max		
REF01	128		M	Reference Identification Qualifier	ID	2	2	"55" – Sequence ID Number	
REF02	127		X	Reference Identification	AN	1	9	Sequence Number	
REF03	352		X	Description	AN	1	5	Error Response Code	
<del>REF~55~0001234\</del>									
Syntax Notes: REF02 is required.									
FTA Notes: REF02 is always required; REF03 is used when responding to an error									
NC Notes: REF03 is not used. See notes on sequence number on page 5-30									

Inventory <span style="float: right;">(Required if FGS is Used)</span>									
Tax Information and Amount Segment <span style="float: right;">Pos. No. 1800</span>									
Element ID	Elem Ref. #	Sub-Element Ref. #	Field Status	Field Name	Field Type	Length		Field Description	
						Min	Max		
TIA01	817		M	Tax Information ID Number	AN	4	4	"5002" = Net Physical Inventory	
<del>TIA02 - TIA02 are not used.</del>									
TIA04	380		X	Quantity	R	1	15	Quantity	
TIA05	355		M	Unit of Measurement Code	ID	2	2	"GA" = Gallons	
<del>TIA 5002 ---- 25000 - GA \</del>									
Syntax Notes: <del>TIA04 is required.</del>									
<del>If TIA05 is present, then TIA04 is required.</del>									
FTA Notes: <del>Physical Inventory is the only value passed in this loop. All other information is derivable from schedules.</del>									

End of FGS loop (Line item detail)

End of TFS loop (SDR detail)

## Transaction Set – Transporter Report (CCR)

This TFS loop reports information on the CCR. Transaction detail is reported using the Summary and Schedule section of this map.

Beginning of Report								
Tax Form Segment								Pos. No. 0100
Element ID	Elem Ref. #	Sub-Ele Ref. #	Field Status	Field Name	Field Type	Length		Field Description
						Min	Max	
TFS01	128		M	Reference Identification Qualifier	ID	2	2	“T2” = Tax Form Code
TFS02	127		M	Reference Identification	AN	1	6	CCR – Transporter Report
TFS~T2~CCR \								
Syntax Notes: None								

Relationship to the Transaction Information								
Reference Segment								Pos. No. 0200
Element ID	Elem Ref. #	Sub-Ele Ref. #	Field Status	Field Name	Field Type	Length		Field Description
						Min	Max	
REF01	128		M	Reference Identification Qualifier	ID	2	2	“SU” – Special Processing
REF02	127		X	Reference Identification	AN	3	3	IRS = IRS Data N/A = If not applicable to the IRS
REF03 Not used								
REF04 01	C040	128	M	Reference Identification Qualifier	ID	2	2	“S0” – Special Approval (S Zero)
REF04 02	C040	127	M	Reference Identification	AN	2	2	State Abbreviation for state which data belongs to.
REF04 03	C040	128	X	Reference Identification Qualifier	ID	2	2	“S0” – Special Approval (S Zero)
REF04 04	C040	127	X	Reference Identification	AN	2	2	State abbreviation for state which data belongs to.
REF-SU-IRS--S0^MT\								
Syntax Notes: REF02 is required.								
FTA Note: REF02, REF04 02 and REF04 04 represent the taxing authorities and their relationship to the information in this TFS loop.								
REF05 – REF07 use the sub-element separator.								

Sequence Number								
Reference Number Segment								Pos. No. 0200
Element ID	Elem Ref #	Sub-Ele Ref #	Field Status	Field Name	Field Type	Length		Field Description
						Min	Max	
REF01	128		M	Reference Identification Qualifier	ID	2	2	“55” = Sequence Number
REF02	127		X	Reference Identification	AN	1	9	Sequence Number
REF03	352		X	Description	AN	4	5	Error Response Code
REF~55-0001234\								
Syntax Notes: At least one of REF02 or REF03 is required.								
FTA Note: This segment is used to identify information for error processing. This segment can be generated by the filer when first filing to assist in identifying information or when responding to an error reported. REF02 is always required. REF03 is used for responding to an error.								

**Condition 1 – If an account has no activity this segment is required. The Condition 2 DTM and FGS are not used.**

<b>No Activity</b>								<b>(Conditional)</b>	
<b>Reference Number Segment</b>								<b>Pos. No. 0200</b>	
Element ID	Elem Ref #	Sub-Ele Ref #	Field Status	Field Name	Field Type	Length		Field Description	
						Min	Max		
REF01	128		M	Entity Identification Code	ID	2	2	“BE” = Business Activity	
REF02	127		X	Name	AN	1	1	“1” = No Activity	
<b>REF~BE~1\</b>									
<b>Syntax Notes: REF02 is required.</b>									
<b>FTA Note: If an account has no activity, this segment is required.</b>									

**Condition 2 – If an account has activity; at least the TIA (Total Delivered) is required. The Condition 1 REF is not used.**

<b>Total Due/Transported</b>								<b>(Conditional)</b>	
<b>Tax Information and amount Segment</b>								<b>Pos. No. 0920</b>	
Element ID	Elem Ref. #	Sub-Ele Ref. #	Field Status	Field Name	Field Type	Length		Field Description	
						Min	Max		
TIA01	C037	817	M	Tax Information ID Number	AN	4	4	“5004” = Total Net Transported	
TIA02	782		X	Monetary Amount	R	1	15	Dollar Amount	
<b>TIA03 is not used.</b>									
TIA04	380		X	Quantity	R	1	15	Quantity	
TIA05	C001	355	M	Unit of Measurement Code	ID	2	2	“GA” = Gallons	
<b>TIA~5003~~10000~GA\</b>									
<b>Syntax Notes: At least one of TIA02 or TIA04 is required. If TIA05 is present, then TIA04 is required.</b>									
<b>FTA Notes: Total Transported is passed as a check value and represents quantity.</b>									
<b>NC Notes: Dollar Amount: Line 5 of GAS-1301 Transporter Return TIA04 Gallons is the sum of net gallons on all schedules for the return</b>									

**End of FGS loop (Line item detail)**

**End of TFS loop (detail)**

## Summary Information

This TFS loop reports summary information. This TFS loop is used in combination with the SDR report.

Summary information is used when the information cannot be derived from the schedule details. This TFS loop repeats when one of the following values changes: TFS02 Summary Code, TFS04 Product Code.

If there are no transactions to report in this filing, it is not necessary to transmit a Summary Information TFS loop.

Beginning of Summary Information									
Tax Form Segment									Pos. No. 0100
Element ID	Elem Ref. #	Sub-Ele Ref. #	Field Status	Field Name	Field Type	Length		Field Description	
						Min	Max		
TFS01	128		M	Reference Identification Qualifier	ID	2	2	“T3” = Tax Schedule Code	
TFS02	127		M	Reference Identification	AN	1	6	TFS02 Summary Code “S02” Total Amount Due “S02A” Tax “S02C” Inspection Fee “S03A” Tax Credit (Adjustments) “S03A01” Administrative Discount “S03B02” Inspection Fee Tare Allowance “S03C” Road Tax Tare Allowance	
TFS03	128		X	Reference Identification Qualifier	ID	2	2	“PG” = Product Group	
TFS04	127		X	Reference Identification	AN	3	3	Product Code See appendix D	
TFS05	66		X	Identification Code Qualifier	ID	2	2	“94” = Mode	
TFS06	67		X	Identification Code	AN	2	2	“CE” = Transaction Type Mode Code	
<b>TFS~T3~S02A~PG~065~94~CE\</b>									
<b>Syntax Notes:</b> If either TFS03 or TFS04 is present, then the other is required. If either TFS05 or TFS06 is present, then the other is required.									
<b>FTA Notes:</b> None									
<b>NC Notes:</b> None									

Relationship to the Transaction Information									
Reference Segment									Pos. No. 0200
Element ID	Elem Ref. #	Sub-Ele Ref. #	Field Status	Field Name	Field Type	Length		Field Description	
						Min	Max		
REF01	128		M	Reference Identification Qualifier	ID	2	2	“SU” = Special Processing	
REF02	127		X	Reference Identification	AN	3	3	IRS = IRS Data N/A = If not applicable to the IRS	
<b>REF02 Not used</b>									
REF04	C040	128	M	Reference Identification Qualifier	ID	2	2	“S0” = Special Approval (S Zero)	
REF05	C040	127	M	Reference Identification	AN	2	2	State Abbreviation for state which data belongs to.	
REF06	C040	128	X	Reference Identification Qualifier	ID	2	2	“S0” = Special Approval (S Zero)	
REF07	C040	127	X	Reference Identification	AN	2	2	State abbreviation for state which data belongs to.	
<b>REF~SU~N/A~S0^NC\</b>									
<b>Syntax Notes:</b> At least one of REF02 or REF03 is required.									
<b>FTA Notes:</b> REF02, REF05 and REF07 represent the taxing authorities and their relationship to the information in this TFS loop. REF05 - REF07 use the sub-element separator.									

Sequence ID Number Reference Number Segment										Pos. No. 0200
Element ID	Elem Ref #	Sub-Ele Ref #	Field Status	Field Name	Field Type	Length		Field Description		
						Min	Max			
REF01	128		M	Reference Identification Qualifier	ID	2	2	"55" = Sequence ID Number		
REF02	127		X	Reference Identification	AN	1	9	Sequence Number		
REF03	352		X	Description	AN	4	5	Error Response Code		
REF~55~0001234\										
Syntax Notes: REF02 is required.										
FTA Notes: REF02 is always required; REF03 is used when responding to an error										
NC Notes: REF03 is not used. See notes on sequence number on page 5-30										

Summary Data Forms Group Segment										Pos. No. 1000
Element ID	Elem Ref. #	Sub-Ele Ref. #	Field Status	Field Name	Field Type	Length		Field Description		
						Min	Max			
FGS	350		M	Assigned Identification	AN	1	1	"S" = Schedule Summary		
FGS~S\										
Syntax Notes: None										
FTA Notes: None										

Sequence ID Number Reference Number Segment										Pos. No. 0200
Element ID	Elem Ref #	Sub-Ele Ref #	Field Status	Field Name	Field Type	Length		Field Description		
						Min	Max			
REF01	128		M	Reference Identification Qualifier	ID	2	2	"55" = Sequence ID Number		
REF02	127		X	Reference Identification	AN	1	9	Sequence Number		
REF03	352		X	Description	AN	4	5	Error Response Code		
REF~55~0001234\										
Syntax Notes: REF02 is required.										
FTA Notes: REF02 is always required; REF03 is used when responding to an error										
NC Notes: REF03 is not used. See notes on sequence number on page 5-30										

Information Tax Information and Amount Segment										Pos. No. 1800
Element ID	Elem Ref. #	Sub-Ele Ref. #	Field Status	Field Name	Field Type	Length		Field Description		
						Min	Max			
TIA01	817		M	Tax Information ID Number	AN	4	4	TIA Code "5005" = Net		
TIA02	782		X	Monetary Amount	R	1	15	Dollar Amount		
TIA03 are not used.										
TIA04	380		X	Quantity	R	1	15	Quantity		
TIA05	355		M	Unit of Measurement Code	ID	2	2	"GA" = Gallons		
TIA~5005~~~25000~GA\ or TIA~5005~1475.63\										
Syntax Notes: At least one of TIA02 or TIA04 is required. If TIA05 is present, then TIA04 is required.										
FTA Notes: None										

<b>Interest</b>									
<b>Tax Information and Amount Segment</b>									<b>Pos. No. 1800</b>
<b>Element ID</b>	<b>Elem Ref. #</b>	<b>Sub-Ele Ref. #</b>	<b>Field Status</b>	<b>Field Name</b>	<b>Field Type</b>	<b>Length</b>		<b>Field Description</b>	
						<b>Min</b>	<b>Max</b>		
TIA01	C037	817	M	Tax Information ID Number	AN	4	4	"5008" = Interest	
TIA02	782		X	Monetary Amount	R	1	15	Dollar Amount	
<b>TIA~5008~500\</b>									
<b>Syntax Notes: TIA02 is required.</b>									
<b>FTA Notes: None</b>									

<b>Penalty</b>									
<b>Tax Information and Amount Segment</b>									<b>Pos. No. 1800</b>
<b>Element ID</b>	<b>Elem Ref. #</b>	<b>Sub-Ele Ref. #</b>	<b>Field Status</b>	<b>Field Name</b>	<b>Field Type</b>	<b>Length</b>		<b>Field Description</b>	
						<b>Min</b>	<b>Max</b>		
TIA01	C037	817	M	Tax Information ID Number	AN	4	4	"5009" = Penalty	
TIA02	782		X	Monetary Amount	R	1	15	Dollar Amount	
<b>TIA~5009~200\</b>									
<b>Syntax Notes: TIA02 is required.</b>									
<b>FTA Notes: None</b>									

End of FGS loop (Line item detail)

End of TFS loop (SDR detail)



## North Carolina Summary Mapping

### Gas-1202 Motor Fuel Supplier Return

TFS02 Summary Code: S03C	[Summary by Primary Product Code]	
Road Tax Tare Allowance	(Page 1, Line 10 of return)	TIA Code: 5005
TFS02 Summary Code: S03B02	[Summary by Primary Product Code]	
Inspection Tax Tare Allowance	(Page 1, Line 14 of return)	TIA Code: 5005
TFS02 Summary Code: S02A	[Summary by Primary Product Code]	
Motor Fuel Tax Due	(Page 1, Line 16 of return)	TIA Code: 5005
TFS02 Summary Code: S02C	[Summary by Primary Product Code]	
Inspection Fees	(Page 1, Line 17 of return)	TIA Code: 5005
TFS02 Summary Code: S03A01	[Summary by Primary Product Code]	
Administrative Discount	(Page 1, Line 18 of return)	TIA Code: 5005
(Total Administrative Discount across all product codes may not exceed \$8,000.00)		
TFS02 Summary Code: S03A	[Summary by Primary Product Code]	
Adjustments	(Page 1, Line 19 of return)	TIA Code: 5005
TFS02 Summary Code: S02		
Total Amount Due	<b>(Required)</b> (Page 1, Line 23 of return)	TIA Code: 5005
Penalty	<b>(Required)</b> (Page 1, Line 21 of return)	TIA Code: 5009
Interest	<b>(Required)</b> (Page 1, Line 22 of return)	TIA Code: 5008

### Gas-1204 Motor Fuel Terminal Operator Return

TFS02 Summary Code: S02		
Penalty	<b>(Required)</b> (Page 1, Line 9 of return)	TIA Code: 5009

### Gas-1301 Motor Fuel Transporter Return

TFS02 Summary Code: S02		
Penalty	<b>(Required)</b> (Page 1, Line 5 of return)	TIA Code: 5009

### Product Code Specifications

#### **Gas-1202 Motor Fuel Supplier Return**

When reporting summary by product, summarize values and report using the primary product code for the column as shown in the following table:

Column	Primary Product Code
Gasoline	065
Undyed Diesel	160
Dyed Diesel	226
Undyed Kerosene	142
Dyed Kerosene	072
Jet Fuel	130
Aviation Gasoline	125

**Note:** Summary segments are required as indicated above and for any value less than or equal to zero. However, summary segments are not required with a "No Activity" filing.

## Schedules

This TFS loop begins the schedule detail. It repeats when one of the following values change:

Tax Form Code, Schedule Code, Mode Code, Product Code, Origin, Position Holder, Seller, Consignor, Carrier, Buyer, or Destination.

If there are no transactions to report in this filing, it is not necessary to transmit a Schedules TFS loop. You must indicate no activity in the TOR, SDR and/or CCR sections of this map.

<b>Beginning of Schedules</b>								<b>Pos. No. 0100</b>	
<b>Tax Form Segment</b>									
Element ID	Elem Ref. #	Sub-Ele Ref. #	Field Status	Field Name	Field Type	Length		Field Description	
						Min	Max		
TFS01	128		M	Reference Identification Qualifier	ID	2	2	"T3" = Tax Schedule Code	
TFS02	127		M	Reference Identification	AN	1	6	Schedule Type Code See schedule code list in Appendix on page C-77	
TFS03	128		X	Reference Identification Qualifier	ID	2	2	"PG" = Product Group	
TFS04	127		X	Reference Identification	AN	3	3	Product Code See Product Codes in Appendix on page D-78	
TFS05	66		X	Identification Code Qualifier	ID	2	2	"94" = Mode	
TFS06	67		X	Identification Code	AN	2	2	Transaction Type Mode Code See Code List in Appendix on page F-82	
TFS~T3~1~PG~065~94~J \									
Syntax Notes: If either TFS03 or TFS04 is present, then the other is required. If either TFS05 or TFS06 is present, then the other is required.									
FTA Notes: None									

<b>Relationship to the Transaction Information</b>								<b>Pos. No. 0200</b>	
<b>Reference Segment</b>									
Element ID	Elem Ref. #	Sub-Ele Ref. #	Field Status	Field Name	Field Type	Length		Field Description	
						Min	Max		
REF01	128		M	Reference Identification Qualifier	ID	2	2	"SU" = Special Processing	
REF02	127		X	Reference Identification	AN	3	3	IRS = IRS Data N/A = If not applicable to the IRS	
REF03 Not used									
REF04	C040	128	M	Reference Identification Qualifier	ID	2	2	"S0" = Special Approval (S Zero)	
REF05	C040	127	M	Reference Identification	AN	2	2	State Abbreviation for state which data belongs to.	
REF06	C040	128	X	Reference Identification Qualifier	ID	2	2	"S0" = Special Approval (S Zero)	
REF07	C040	127	X	Reference Identification	AN	2	2	State abbreviation for state which data belongs to.	
REF~SU~N/A~~S0^NC\									
Syntax Notes: REF02 is required.									
FTA Notes: REF02, REF05 and REF07 represent the taxing authorities and their relationship to the information in this TFS loop. REF05 REF07 use the sub element separator.									

<b>Sequence ID Number</b>								<b>Pos. No. 0200</b>	
<b>Reference Number Segment</b>									
Element ID	Elem Ref #	Sub-Ele Ref #	Field Status	Field Name	Field Type	Length		Field Description	
						Min	Max		
REF01	128		M	Reference Identification Qualifier	ID	2	2	"55" = Sequence ID Number	
REF02	127		X	Reference Identification	AN	1	9	Sequence Number	
REF03	352		X	Description	AN	4	5	Error Response Code	
REF~55~0001234\									
Syntax Notes: REF02 is required.									
FTA Notes: REF02 is always required; REF03 is used when responding to an error									
NC Notes: REF03 is not used. See notes on sequence number on page 5-30									

For Point of Origin/Terminal: (One of the following Options is Required)

Use Option 1 when the origin has an IRS TCN.

Use Option 2 when the origin does not have an IRS TCN.

Use Option 3 when the state requires an origin facility ID (currently used by the state of Florida).

### Option 1

Point of Origin Name Segment 1										(One of the two options is used) Pos. No. 0500	
Element ID	Elem Ref. #	Sub-Ele Ref. #	Field Status	Field Name	Field Type	Length		Field Description			
						Min	Max				
N101	98		M	Entity Identification Code	ID	2	2	"OT" = Origin Terminal			
N102 is not used.											
N103	66		X	Identification Code Qualifier	ID	2	2	"TC" = IRS Terminal Code			
N104	67		X	Identification Code	AN	9	9	IRS Terminal Code (Code list is located at <a href="http://www.irs.gov/bus_info/excise/index.html">www.irs.gov/bus_info/excise/index.html</a> )			
N1~OT~~TC~T56NC0000\											
Syntax Notes:										N103 is required. If either N103 or N104 is present, then the other is required.	
FTA Notes:										None	
NC Notes:										Origin Terminal (Option 1) is required when the origin has an IRS TCN Origin Terminal (Option 1) is required for all Terminal Operator Disbursements Origin Terminal (Option 1) is required for Supplier Schedule 6X – Gallons exchanged between licensed suppliers Origin is optional for Terminal Operator Receipts Either origin option 1 or origin option 2 is required for all other schedules	

### Option 2

Point of Origin Name Segment 1										(One of the two options is used) Pos. No. 0500	
Element ID	Elem Ref. #	Sub-Ele Ref. #	Field Status	Field Name	Field Type	Length		Field Description			
						Min	Max				
N101	98		M	Entity Identification Code	ID	2	2	"SF" = Ship From			
N102	93		X	Name	AN	2	2	Origin State Abbreviation			
N1~SF~NC\											
Syntax Notes:										N102 is required.	
FTA Notes:										None	
NC Notes:										Either origin option 1 or origin option 2 is required for all schedules	

Point of Origin Name Segment 1										Pos. No. 0500	
Element ID	Elem Ref. #	Sub-Ele Ref. #	Field Status	Field Name	Field Type	Length		Field Description			
						Min	Max				
N401	19		M	City Name	AN	2	30	Name of City			
N402	156		O	State or Province Code	ID	2	2	State or Providence Abbreviation			
N403	116		O	Postal Code	ID	3	11	ZIP or ZIP plus 4 Code			
N4~Se1ma~NC\											
Syntax Notes:										None	
FTA Notes:										None	
NC Notes:										Include this segment when using origin option 2.	

## Option 3

Point of Origin <span style="float: right;">(One of the three options is used)</span>									
Name Segment 1 <span style="float: right;">Pos. No. 0500</span>									
Element ID	Elem Ref. #	Sub-Ele Ref. #	Field Status	Field Name	Field Type	Length		Field Description	
						Min	Max		
N101	98		M	Entity Identification Code	ID	2	2	"WO" = Storage Facility at Origin	
N102 is not used.									
N103	66		X	Identification Code Qualifier	ID	2	2	"FA" = Facility Identification	
N104	67		X	Identification Code	AN	2	20	Facility/License Number	
<del>N1~WO~FA~123456\</del>									
Syntax Notes: <b>N103 is required.</b> <b>If either N103 or N104 is present, then the other is required.</b>									
FTA Notes: <b>None</b>									

Seller Information <span style="float: right;">Pos. No. 0500</span>									
Name Segment 2									
Element ID	Elem Ref. #	Sub-Ele Ref. #	Field Status	Field Name	Field Type	Length		Field Description	
						Min	Max		
N101	98		M	Entity Identification Code	ID	2	2	"SE" = Selling Party	
N102	93		X	Name	AN	1	35	Seller's Name	
N103	66		X	Identification Code Qualifier	ID	2	2	"24" = FEIN "34" = SSN "50" = BN – Canadian Business Number	
N104	67		X	Identification Code	AN	9	18	Seller's FEIN or SSN or BN + 2 character suffix	
N1~SE~Fuel Inc~24~5166699901\									
Syntax Notes: <b>At least one of N102 or N103 is required.</b> <b>If either N103 or N104 is present, then the other is required.</b>									
FTA Notes: <b>None</b>									
NC Notes: <b>Required for Supplier Receipt Schedules</b> <b>Required for Transporter Schedules</b> <b>FEIN or SSN or BN + 2 character suffix is the Account Number as reflected in the NC Motor Fuels Tax Master Bulletin.</b>									

Position Holder Information or Delivering Exchange Party Information <span style="float: right;">Pos. No. 0500</span>									
Name Segment 3									
Element ID	Elem Ref. #	Sub-Ele Ref. #	Field Status	Field Name	Field Type	Length		Field Description	
						Min	Max		
N101	98		M	Entity Identification Code	ID	2	2	"ON" = Position Holder	
N102	93		X	Name	AN	1	35	Position Holder's Name	
N103	66		X	Identification Code Qualifier	ID	2	2	"24" = FEIN "34" = SSN "50" = BN – Canadian Business Number	
N104	67		X	Identification Code	AN	9	18	Position Holder's FEIN or SSN or BN + 2 character suffix	
N1~ON~ABC Fuel~24~5168888802\									
Syntax Notes: <b>At least one of N102 or N103 is required.</b> <b>If either N103 or N104 is present, then the other is required.</b>									
FTA Notes: <b>None</b>									
NC Notes: <b>Required for Terminal Operator Receipt Schedules</b> <b>Required for Terminal Operator Disbursement Schedules</b> <b>FEIN or SSN or BN + 2 character suffix is the Account Number as reflected in the NC Motor Fuels Tax Master Bulletin.</b>									

Receiving Exchange Party Information									
Name Segment 3									Pos. No. 0500
Element ID	Elem Ref. #	Sub-Ele Ref. #	Field Status	Field Name	Field Type	Length		Field Description	
						Min	Max		
N101	98		M	Entity Identification Code	ID	2	2	"EC" = Position Holder	
N102	93		X	Name	AN	1	35	Position Holder's Name or Control Name (First 4 position of tax payer business name)	
N103	66		X	Identification Code Qualifier	ID	2	2	"24" = FEIN "34" = SSN "F1" = Federal Taxpayer 637 ID Number "50" = BN - Canadian Business Number	
N104	67		X	Identification Code	AN	9	18	Position Holder's FEIN or SSN or IRS 637 Number or BN	
<del>N1~EC~ABC Fuel~24~51688888\</del>									
Syntax Notes: At least one of N102 or N103 is required. If either N103 or N104 is present, then the other is required.									
FTA Notes: None									

Person Hiring Carrier (Consignor)									
Name Segment 4									Pos. No. 0500
Element ID	Elem Ref. #	Sub-Ele Ref. #	Field Status	Field Name	Field Type	Length		Field Description	
						Min	Max		
N101	98		M	Entity Identification Code	ID	2	2	"CI" = Consignor (Person Hiring the Carrier)	
N102	93		X	Name	AN	1	35	Consignor Name	
N103	66		X	Identification Code Qualifier	ID	2	2	"24" = FEIN "34" = SSN "50" = BN - Canadian Business Number	
N104	67		X	Identification Code	AN	9	18	Consignor's (Person Hiring the Carrier) FEIN or SSN or BN + 2 character suffix	
<del>N1~CI~ABC Distributing~24~5167777701\</del>									
Syntax Notes: At least one of N102 or N103 is required. If either N103 or N104 is present, then the other is required.									
FTA Notes: None									
NC Notes: Required for Transporter schedules FEIN or SSN or BN + 2 character suffix is the Account Number as reflected in the NC Motor Fuels Tax Master Bulletin.									

Carrier Information									
Name Segment 5									Pos. No. 0500
Element ID	Elem Ref. #	Sub-Ele Ref. #	Field Status	Field Name	Field Type	Length		Field Description	
						Min	Max		
N101	98		M	Entity Identification Code	ID	2	2	"CA" = Carrier Name	
N102	93		X	Name	AN	1	35	Carrier Name	
N103	66		X	Identification Code Qualifier	ID	2	2	"24" = FEIN "34" = SSN "50" = BN - Canadian Business Number	
N104	67		X	Identification Code	AN	9	18	Carrier's FEIN or SSN or BN + 2 character suffix	
<del>N1~CA~XYZ Trucking~24~51515151501\</del>									
Syntax Notes: At least one of N102 or N103 is required. If either N103 or N104 is present, then the other is required.									
FTA Notes: None									
NC Notes: Required for all schedules FEIN or SSN or BN + 2 character suffix is the Account Number as reflected in the NC Motor Fuels Tax Master Bulletin.									

Buyer/Consignee Information									
Name Segment 6									Pos. No. 0500
Element ID	Elem Ref. #	Sub-Ele Ref. #	Field Status	Field Name	Field Type	Length		Field Description	
						Min	Max		
N101	98		M	Entity Identification Code	ID	2	2	"BY" = Buying Party (Purchaser/Consignee)	
N102	93		X	Name	AN	1	35	Buyer Name	
N103	66		X	Identification Code Qualifier	ID	2	2	"24" = FEIN "34" = SSN "50" = BN – Canadian Business Number	
N104	67		X	Identification Code	AN	9	18	Purchaser's FEIN or SSN or BN + 2 character suffix	
N1~BY~Oil Purchaser~24~5172222202\									
Syntax Notes: At least one of N102 or N103 is required. If either N103 or N104 is present, then the other is required.									
FTA Notes: None									
NC Notes: Required for Supplier Disbursement and Transporter Schedules FEIN or SSN or BN + 2 character suffix is the Account Number as reflected in the NC Motor Fuels Tax Master Bulletin.									

**For Point (Address) of Delivery/Destination: (One of the following Options is Required)**

Use Option 1 when the destination has an IRS TCN.

Use Option 2 when the destination does not have an IRS TCN.

Use Option 3 when the state requires a destination facility ID (currently used by the state of Florida).

**Option 1**

Point of Destination									
Name Segment 7									(One of the two options is used) Pos. No. 0500
Element ID	Elem Ref. #	Sub-Ele Ref. #	Field Status	Field Name	Field Type	Length		Field Description	
						Min	Max		
N101	98		M	Entity Identification Code	ID	2	2	"DT" = Destination Terminal	
N102 is not used.									
N103	66		X	Identification Code Qualifier	ID	2	2	"TC" = IRS Terminal Code	
N104	67		X	Identification Code	AN	9	9	IRS Terminal Code (Code list is located at <a href="http://www.irs.gov/bus_info/excise/index.html">www.irs.gov/bus_info/excise/index.html</a> )	
N1~DT~~TC~T56NC0000\									
Syntax Notes: N103 is required. If either N103 or N104 is present, then the other is required.									
FTA Notes: None									
NC Notes: Destination Terminal (Option 1) is required when the destination has an IRS TCN Destination Terminal (Option 1) is required for all Terminal Operator Receipts. Either Destination option 1 or Destination option 2 is required for all schedules									

**Option 2**

Point of Destination									
Name Segment 7									(One of the two options is used) Pos. No. 0500
Element ID	Elem Ref. #	Sub-Ele Ref. #	Field Status	Field Name	Field Type	Length		Field Description	
						Min	Max		
N101	98		M	Entity Identification Code	ID	2	2	"ST" = Ship To	
N102	93		X	Name	AN	2	2	Destination State Abbreviation	
N1~ST~NC\									
Syntax Notes: N102 is required.									
FTA Notes: None									

Point of Destination Name Segment 7										Pos. No. 0500
Element ID	Elem Ref. #	Sub-Ele Ref. #	Field Status	Field Name	Field Type	Length		Field Description		
						Min	Max			
N401	19	19	M	City Name	AN	2	30	Name of City		
N402	156	156	O	State or Province Code	ID	2	2	State or Providence Abbreviation		
N403	116	116	Ø	Postal Code	ID	3	11	ZIP or ZIP plus 4 Code		
N4~Greensboro~NC\										
Syntax Notes: None										
FTA Notes: None										
NC Notes: Include this segment when using destination option 2.										

## Option 3

Point of Destination Name Segment 7										(One of the three options is used) Pos. No. 0500
Element ID	Elem Ref. #	Sub-Ele Ref. #	Field Status	Field Name	Field Type	Length		Field Description		
						Min	Max			
N101	98		M	Entity Identification Code	ID	2	2	"WD" = Destination Facility		
N102 is not used.										
N103	66		X	Identification Code Qualifier	ID	2	2	"FA" = Facility Identification		
N104	67		X	Identification Code	AN	2	20	Facility/License Number		
N1~WD~FA~123456\										
Syntax Notes: N103 is required. If either N103 or N104 is present, then the other is required.										
FTA Notes: None										

This FGS loop begins the individual shipments within the TFS loop. It is repeated when one of the following values changes:  
 Bill of Lading (Document) Number  
 Bill of Lading Date (Date Shipped)  
 Gallons

Bill of Lading Forms Group Segment										Pos. No. 1000
Element ID	Elem Ref. #	Sub-Ele Ref. #	Field Status	Field Name	Field Type	Length		Field Description		
						Min	Max			
FGS01	350		M	Assigned Identification	AN	1	1	"D" = Schedule Detail		
FGS02	128		X	Reference Identification Qualifier	ID	2	2	"BM" = Bill of Lading Number		
FGS03	127		X	Reference Identification	AN	1	15	Bill of Lading Number		
FGS~D~BM~00123456\										
Syntax Notes: If either FGS02 or FGS03 is present, then the other is required.										
FTA Notes: None										

Sequence ID Number Reference Number Segment										Pos. No. 0200
Element ID	Elem Ref #	Sub-Ele Ref #	Field Status	Field Name	Field Type	Length		Field Description		
						Min	Max			
REF01	128		M	Reference Identification Qualifier	ID	2	2	"55" = Sequence ID Number		
REF02	127		X	Reference Identification	AN	1	9	Sequence Number		
REF03	352		X	Description	AN	1	5	Error Response Code		
REF~55~0001234\										
Syntax Notes: REF02 is required.										
FTA Notes: REF02 is always required; REF03 is used when responding to an error										
NC Notes: REF03 is not used. See notes on sequence number on page 5-30										

Bill of Lading Date									
Date/Time Reference Segment									Pos. No. 1200
Element ID	Elem Ref. #	Sub-Ele Ref. #	Field Status	Field Name	Field Type	Length		Field Description	
						Min	Max		
DTM01	374		M	Date/Time Qualifier	ID	3	3	"095" = Bill of Lading Date	
DTM02	373		X	Date	DT	8	8	Bill of Lading Date (CCYYMMDD)	
DTM~095~20010505\									
Syntax Notes: DTM02 is required.									
FTA Notes: None									

Bill of Lading Net									
Tax Information and Amount Segment									Pos. No. 1800
Element ID	Elem Ref. #	Sub-Ele Ref. #	Field Status	Field Name	Field Type	Length		Field Description	
						Min	Max		
TIA01	817		M	Tax Information ID Number	AN	4	4	"5005" = Net	
TIA02 and TIA03 are not used.									
TIA04	380		X	Quantity	R	1	15	Quantity	
TIA05	355		M	Unit of Measurement Code	ID	2	2	"GA" = Gallons	
TIA~5005~~~8000~GA\									
Syntax Notes: TIA04 is required. If TIA05 is present, then TIA04 is required.									
FTA Notes: None									
NC Notes: Required									

Bill of Lading Gross									
Tax Information and Amount Segment									Pos. No. 1800
Element ID	Elem Ref. #	Sub-Ele Ref. #	Field Status	Field Name	Field Type	Length		Field Description	
						Min	Max		
TIA01	817		M	Tax Information ID Number	AN	4	4	"5006" = Gross	
TIA02 and TIA03 are not used.									
TIA04	380		X	Quantity	R	1	15	Quantity	
TIA05	355		M	Unit of Measurement Code	ID	2	2	"GA" = Gallons	
TIA~5006~~~8000~GA\									
Syntax Notes: TIA04 is required. If TIA05 is present, then TIA04 is required.									
FTA Notes: None									
NC Notes: Required									

Bill of Lading Billed									
Tax Information and Amount Segment									Pos. No. 1800
Element ID	Elem Ref. #	Sub-Ele Ref. #	Field Status	Field Name	Field Type	Length		Field Description	
						Min	Max		
TIA01	817		M	Tax Information ID Number	AN	4	4	"5007" = Billed	
TIA02 and TIA03 are not used.									
TIA04	380		X	Quantity	R	1	15	Quantity	
TIA05	355		M	Unit of Measurement Code	ID	2	2	"GA" = Gallons	
TIA~5007~~~8000~GA\									
Syntax Notes: TIA04 is required. If TIA05 is present, then TIA04 is required.									
FTA Notes: None									
NC Notes: Required for all Supplier schedules									

End of FGS loop for Individual shipments.  
End of TFS loop for Schedule.



## Transaction Set Trailer Description

End of Transaction Set Trailer Segment								(Required) Pos. No. 0100	
Element ID	Elem Ref #	Sub-Ele Ref #	Field Status	Field Name	Field Type	Length		Field Description	
						Min	Max		
SE01	96		M	Number of Included Segments	N0	1	10	Number of segments (inserted by translator)	
SE02	329		M	Transaction Set Control Number	AN	4	9	Determined by Filer (same value in ST02, unique control number)	
SE~156~10001\									
Syntax Notes: None									
FTA Notes: None									
End of Transaction Set									

# Chapter 6 - 820 ACH Debit Payment

ANSI ASC X12 - 820 EDI Standard

RELEASE - 004030

TRANSACTION SET TABLES - 820

## 820 Payment Order/Remittance Advice

FUNCTIONAL GROUP: RA

This Draft Standard for Trial Use contains the format and establishes the data contents of the Payment Order/Remittance Advice Transaction Set (820) for use within the context of an Electronic Data Interchange (EDI) environment. The transaction set can be used to make a payment, send a remittance advice, or make a payment and send a remittance advice.

This transaction set can be an order to a financial institution to make a payment to a payee. It can also be a remittance advice identifying the detail needed to perform cash application to the payee's accounts receivable system. The remittance advice can go directly from payer to payee, through a financial institution, or through a third party agent.

Table 1

NOTE	POS.NO.	SEG.ID	NAME	REQ.DES.	MAX USE	LOOP REPEAT
	0100	ST	Transaction Set Header	M	1	
	0200	BPR	Beginning Segment for Payment Order/Remittance Advice	M	1	
	0300	NTE	Note/Special Instruction	O	>1	
C	0350	TRN	Trace	O	1	
C	0400	CUR	Currency	O	1	
	0500	REF	Reference Identification	O	>1	
	0600	DTM	Date/Time Reference	O	>1	
<b>LOOP ID - N1</b> >1						
C	0700	N1	Name	O	1	
	0800	N2	Additional Name Information	O	>1	
	0900	N3	Address Information	O	>1	
	1000	N4	Geographic Location	O	1	
	1100	REF	Reference Identification	O	>1	
	1200	PER	Administrative Communications Contact	O	>1	
	1300	RDM	Remittance Delivery Method	O	1	
	1400	DTM	Date/Time Reference	O	1	

Table 2

NOTE	POS.NO.	SEG.ID	NAME	REQ.DES.	MAX USE	LOOP REPEAT
<b>LOOP ID - ENT</b> >1						
NC	0100	ENT	Entity	O	1	
<b>LOOP ID - FA1</b> >1						
	0150	FA1	Type of Financial Accounting Data	O	1	
	0160	FA2	Accounting Data	M	>1	
<b>LOOP ID - NM1</b> >1						
C	0200	NM1	Individual or Organizational Name	O	1	
	0300	N2	Additional Name Information	O	>1	
	0400	N3	Address Information	O	>1	
	0500	N4	Geographic Location	O	1	
	0600	REF	Reference Identification	O	>1	
	0700	PER	Administrative Communications Contact	O	>1	
<b>LOOP ID - ADX</b> >1						
C	0800	ADX	Adjustment	O	1	
	0900	NTE	Note/Special Instruction	O	>1	

DECEMBER 1999

1

3

820 • TRANSACTION SET TABLES

RELEASE • 004030

	1000	PER	Administrative Communications Contact	0	>1
	1050	DTM	Date/Time Reference	0	1
			<b>LOOP ID - REF</b>		>1
	1100	REF	Reference Identification	0	1
	1200	DTM	Date/Time Reference	0	>1
			<b>LOOP ID - IT1</b>		>1
C	1300	IT1	Baseline Item Data (Invoice)	0	1
	1310	RPA	Rate Amounts or Percents	0	1
	1320	QTY	Quantity	0	1
			<b>LOOP ID - REF</b>		>1
	1400	REF	Reference Identification	0	1
	1410	DTM	Date/Time Reference	0	1
			<b>LOOP ID - SAC</b>		>1
	1420	SAC	Service, Promotion, Allowance, or Charge Information	0	1
	1430	TXI	Tax Information	0	>1
	1440	DTM	Date/Time Reference	0	10
			<b>LOOP ID - SLN</b>		>1
	1450	SLN	Subline Item Detail	0	1
			<b>LOOP ID - REF</b>		>1
	1460	REF	Reference Identification	0	1
	1470	DTM	Date/Time Reference	0	>1
			<b>LOOP ID - SAC</b>		>1
	1480	SAC	Service, Promotion, Allowance, or Charge Information	0	1
	1490	TXI	Tax Information	0	>1
			<b>LOOP ID - FA1</b>		>1
	1495	FA1	Type of Financial Accounting Data	0	1
	1496	FA2	Accounting Data	M	>1
			<b>LOOP ID - RMR</b>		>1
C	1500	RMR	Remittance Advice Accounts Receivable Open Item Reference	0	1
	1600	NTE	Note/Special Instruction	0	>1
	1700	REF	Reference Identification	0	>1
	1800	DTM	Date/Time Reference	0	>1
	1850	VEH	Vehicle Information	0	1
			<b>LOOP ID - IT1</b>		>1
C	1900	IT1	Baseline Item Data (Invoice)	0	1
	1920	RPA	Rate Amounts or Percents	0	1
	1940	QTY	Quantity	0	1
			<b>LOOP ID - REF</b>		>1
	2000	REF	Reference Identification	0	1
	2010	DTM	Date/Time Reference	0	1
			<b>LOOP ID - SAC</b>		>1
	2020	SAC	Service, Promotion, Allowance, or Charge Information	0	1
	2030	TXI	Tax Information	0	>1
			<b>LOOP ID - SLN</b>		>1
	2040	SLN	Subline Item Detail	0	1
			<b>LOOP ID - REF</b>		>1
	2050	REF	Reference Identification	0	1
	2060	DTM	Date/Time Reference	0	>1
			<b>LOOP ID - SAC</b>		>1
	2070	SAC	Service, Promotion, Allowance, or Charge Information	0	1

---

<sup>4</sup> *Data Interchange Standards Association, Inc. (DISA)*

RELEASE • 004030		TRANSACTION SET TABLES • 820		
2080	<b>TXI</b> Tax Information	0	>1	
<b>LOOP ID - ADX</b>				>1
C	2100 <b>ADX</b> Adjustment	0	1	
	2200 <b>NTE</b> Note/Special Instruction	0	>1	
	2300 <b>PER</b> Administrative Communications Contact	0	>1	
<b>LOOP ID - REF</b>				>1
	2400 <b>REF</b> Reference Identification	0	1	
	2500 <b>DTM</b> Date/Time Reference	0	>1	
<b>LOOP ID - IT1</b>				>1
C	2600 <b>IT1</b> Baseline Item Data (Invoice)	0	1	
	2610 <b>RPA</b> Rate Amounts or Percents	0	1	
	2620 <b>QTY</b> Quantity	0	1	
<b>LOOP ID - REF</b>				>1
	2700 <b>REF</b> Reference Identification	0	1	
	2710 <b>DTM</b> Date/Time Reference	0	1	
<b>LOOP ID - SAC</b>				>1
	2720 <b>SAC</b> Service, Promotion, Allowance, or Charge Information	0	1	
	2730 <b>TXI</b> Tax Information	0	>1	
	2740 <b>DTM</b> Date/Time Reference	0	10	
<b>LOOP ID - SLN</b>				>1
	2750 <b>SLN</b> Subline Item Detail	0	1	
<b>LOOP ID - REF</b>				>1
	2760 <b>REF</b> Reference Identification	0	1	
	2770 <b>DTM</b> Date/Time Reference	0	>1	
<b>LOOP ID - SAC</b>				>1
	2780 <b>SAC</b> Service, Promotion, Allowance, or Charge Information	0	1	
	2790 <b>TXI</b> Tax Information	0	>1	
<b>LOOP ID - FA1</b>				>1
	2795 <b>FA1</b> Type of Financial Accounting Data	0	1	
	2796 <b>FA2</b> Accounting Data	M	>1	
<b>LOOP ID - TXP</b>				>1
N	2800 <b>TXP</b> Tax Payment	0	1	
	2850 <b>TXI</b> Tax Information	0	>1	
<b>LOOP ID - DED</b>				>1
N	2870 <b>DED</b> Deductions	0	1	
<b>LOOP ID - LX</b>				>1
N	2900 <b>LX</b> Assigned Number	0	1	
	2950 <b>REF</b> Reference Identification	0	>1	
	3000 <b>TRN</b> Trace	0	>1	
<b>LOOP ID - NM1</b>				>1
	3050 <b>NM1</b> Individual or Organizational Name	0	1	
	3100 <b>REF</b> Reference Identification	0	>1	
	3150 <b>G53</b> Maintenance Type	0	1	
<b>LOOP ID - AIN</b>				>1
	3200 <b>AIN</b> Income	0	1	
	3250 <b>QTY</b> Quantity	0	>1	
	3300 <b>DTP</b> Date or Time or Period	0	>1	
<b>LOOP ID - PEN</b>				>1
	3350 <b>PEN</b> Pension Information	0	1	
	3400 <b>AMT</b> Monetary Amount	0	>1	



820 • TRANSACTION SET TABLES

RELEASE • 004030

	3450	DTP	Date or Time or Period	0	>1			
		<b>LOOP ID - INV</b>						
	3500	INV	Investment Vehicle Selection	0	1	>1		
	3550	DTP	Date or Time or Period	0	>1			
		<b>LOOP ID - N9</b>						1
N	3600	N9	Reference Identification	0	1			
	3650	REF	Reference Identification	0	>1			
		<b>LOOP ID - AMT</b>						>1
C	3700	AMT	Monetary Amount	0	1			
	3800	REF	Reference Identification	0	>1			
		<b>LOOP ID - N1</b>						>1
	3900	N1	Name	0	1			
	4000	REF	Reference Identification	0	>1			
		<b>LOOP ID - EMS</b>						>1
	4100	EMS	Employment Position	0	1			
	4200	ATN	Attendance	0	>1			
	4300	AIN	Income	0	>1			
	4400	PYD	Payroll Deduction	0	>1			
		<b>LOOP ID - RYL</b>						>1
N	4500	RYL	Royalty Payment	0	1			
		<b>LOOP ID - NM1</b>						>1
	4600	NM1	Individual or Organizational Name	0	1			
		<b>LOOP ID - LOC</b>						>1
	4700	LOC	Location	0	1			
		<b>LOOP ID - PID</b>						>1
	4800	PID	Product/Item Description	0	1			
	4900	DTM	Date/Time Reference	0	1			
		<b>LOOP ID - PCT</b>						>1
	5000	PCT	Percent Amounts	0	1			
	5100	QTY	Quantity	0	1			
		<b>LOOP ID - AMT</b>						>1
	5200	AMT	Monetary Amount	0	1			
	5300	ADX	Adjustment	0	>1			
		<b>LOOP ID - ASM</b>						1
	5400	ASM	Amount and Settlement Method	0	1			
	5500	ADX	Adjustment	0	1			

Table 3

NOTE	POS.NO.	SEG.ID	NAME	REQ.DES.	MAX USE	LOOP REPEAT
	0100	SE	Transaction Set Trailer	M	1	
			Adds segment to table/positions 2/0150, 2/0160, 2/1495, 2/1496, 2/2795 and 2/2796.			2 329398
			Adds segment to table/position 2/3650.			2 332398
			Adds segment to table/position 2/1850.			4 093199

NOTES

- 2/0100 The ENT loop is for vendor or consumer third party consolidated payments.
- 2/2800 The TXP loop is for tax payments.
- 2/2870 The DED loop is for child support payments.
- 2/2900 The LX loop is for pension payments.
- 2/3600 The N9 loop is for payroll payments.
- 2/4500 The RYL loop is for royalty payments.





RELEASE • 004030

TRANSACTION SET TABLES • 820

**COMMENTS**

- 1/0350 The TRN segment is used to uniquely identify a payment order/remittance advice.
- 1/0400 The CUR segment does not initiate a foreign exchange transaction.
- 1/0700 The N1 loop allows for name/address information for the payer and payee which would be utilized to address remittance(s) for delivery.
- 2/0100 ENT09 may contain the payee's accounts receivable customer number.
- 2/0200 Allowing the NM1 segment to repeat in this area allows the paying entity within a payer and the paid entity within a payee to be identified (not the payer and payee).
- 2/0800 This ADX loop contains adjustment items which are not netted to an RMR segment in this transaction set.
- 2/1300 Loop IT1 within the ADX loop is the adjustment line item detail loop.
- 2/1500 Loop RMR is for open items being referenced or for payment on account.
- 2/1900 Loop IT1 within the RMR loop is the remittance line item detail loop.
- 2/2100 This ADX loop can only contain adjustment information for the immediately preceding RMR segment and affects the amount (RMR04) calculation. If this adjustment amount is not netted to the immediately preceding RMR, use the outer ADX loop (position 080).
- 2/2600 Loop IT1 within the ADX loop is the adjustment line item detail loop.
- 2/3700 The AMT segment can be used to provide information about allocation or distribution of net pay that is split across multiple payment orders.

Changes comment at table/position 2/3700.

2 331398

DECEMBER 1999

5



## 820 Structure

**Table 1**

Pos No	Uniform 820 Map	Header
0100	ST	Transaction Set Header
0200	BTI	Identify Tax Agency Information
0200	BPR	Payment Order Remittance Advice
0350	TRN	Sender Defined Trace Number
0600	DTM	Tax Filing Period
0700	N1	Taxpayer Name Detail
0900	N3	Address Detail
1000	N4	City, State, Zip Code Detail
1200	PER	General Contact Person

**Table 2**

Pos No	Uniform 820 Map	Header
2800	TXP	Tax Payment Segment

**Table 3**

Pos No	Uniform 820 Map	Header
0100	SE	Transaction Set Trailer

## 820 Map Flow

- 0100	ST	Transaction Set Header (TS 820)		Max 1
0200	BPR	Payment Order Remittance Advice		
0350	TRN	Sender Defined Trace Numbe		
0600	DTM	Tax Filing Period		
-0700	N1 Loop	Taxpayer Name		Max 1
0700	N1	Taxpayer Name		
0900	N3	Address detail		
1000	N4	City State Zip Code Detail		
1200	PER	General Contct Persn		
- 0100	TFS Loop	Beginning of Schedules		Max >1
2800	TXP	Tax Payment Detail		
-0100	SE	Transaction Set Trailer		

## **820 Map/Envelope Structure**

One or more 820 transaction sets can be included within an ISA/GS envelope. An ISA/GS envelope may contain all 820 transactions or all 813 transactions; different transaction sets may not be mixed in an envelope.

**Key:**

Not Used	Not used: no data to transmit
Syntax Notes	Note: Notes defined by X12 Standards
FTA Notes	Note: Notes defined by FTA Uniformity

### Transaction Set Header Description

Beginning of Transaction Set Header Segment								(Required) Pos. No. 0100	
Element ID	Elem Ref #	Sub-Ele Ref #	Field Status	Field Name	Field Type	Length		Field Description	
						Min	Max		
ST01	143		M	Transaction Set Code	ID	3	3	Transaction Set Type "820"	
ST02	329		M	Transaction Set Control Number	AN	4	9	Transmitter defined unique control number (same value as SE02)	
ST03	1705		O/Z	Implementation Convention Reference	AN	1	5	Version of taxing authority's implementation guide.	
ST~820~00500~1.0\									
Syntax Notes: None									
FTA Note: It is recommended that ST03 be used to help identify which implementation guide the trading partner is using. This element will help the receiver of the data determine if the sender is using an old guide or the most current guide for the data transmission.									

Payment Order Remittance Advice Beginning Segment								(Required) Pos. No. 0200	
Element ID	Elem Ref #	Sub-Ele Ref #	Field Status	Field Name	Field Type	Length		Field Description	
						Min	Max		
BPR01	305		M	Transaction Handling Code	ID	1	2	"S" = Single Debit Authorization	
BPR02	782		M	Monetary Amount	R	1	18	Amount of tax payment	
BPR03	478		M	Credit/Debit Flag Code	ID	1	1	"D" = Debit	
BPR04	591		M	Payment Method Code	ID	3	3	"ACH" = Automated Clearing House	
BPR05	812		M	Payment Format Code	ID	3	3	"CCD" = Cash Concentration/Disbursement	
<b>BPR06 through BPR11 are not inserted by the taxpayer. They are on file with the party that creates the ACH Debit transaction. The taxpayer transmits empty fields for these elements.</b>									
BPR06	506		X/Z	(ODFI) ID Number Qualifier	ID	2	2	"01" = ABA Transit Routing Number and Check Digits.	
BPR07	507		X	(ODFI) Identification Number	AN	3	12	State's Bank Routing and Transit Number	
BPR08	569		O/Z	(ODFI) Account Number Qualifier	ID	1	3	"DA" = Demand Deposit "SG" = Savings	
BPR09	508		X/Z	(ODFI) Account Number	AN	1	35	State's Bank Account Number to be Credited	
BPR10	509		O	Originating Company Identifier	AN	10	10	State ID Example: Taxing Authority's DUNS Number	
BPR11	510		O	Originating Company Supplemental Code	O	9	9	Code Identifying Fiscal Agent	
BPR12	506		X/Z	(RDFI) ID Number Qualifier	ID	2	2	"01" = ABA Transit Routing Number and Check Digits	
BPR13	507		X	(RDFI) Identification Number	AN	3	12	Taxpayer's Bank Routing and Transit Number	
BPR14	569		O/Z	(RDFI) Account Number Qualifier	ID	1	3	"DA" = Demand Deposit "SG" = Savings	
BPR15	508		X/Z	(RDFI) Account Number	AN	1	35	Taxpayer's Bank Account to be Debited	
BPR16	373		O/Z	Date	DT	8	8	The intended payment effective date (CCYYMMDD)	
BPR17	1048		O/Z	Business Function Code	ID	1	3	"TAX" = Tax Payment	
BPR~S~500~D~ACH~CCD~~~~~01~123456789~DA~987654321~~TAX\									
Syntax Notes: If either BPR12 or BPR13 is present, then the other is required. If BPR14 is present, then BPR15 is required.									
FTA Notes: ODFI (Originating Depository Financial Institution) is the bank that creates the ACH transaction. For debit transactions, this is the state's Bank. RDFI (Receiving Depository Financial Institution) is the bank that accepts the ACH transaction. For debit transactions, this is the Taxpayer's Bank.									

**NC Notes:** Please refer to payment procedures regarding the payment effective date.

Sender defined Trace Number Trace Segment							(Required) Pos. No. 0350	
Element ID	Elem Ref #	Sub-Ele Ref #	Field Status	Field Name	Field Type	Length		Field Description
						Min	Max	
TRN01	481		M	Trace Type Code	ID	1	1	"1" = Current Transaction Trace Number
TRN02	127		M/Z	Reference Identification	AN	1	50	Sender defined Trace Number associated with EFT
TRN~1~abc123\								
Syntax Notes: None								
FTA Notes: None								

Tax Filing Period Date/Time Reference Segment							(Required) Pos. No. 0600	
Element ID	Elem Ref #	Sub-Ele Ref #	Field Status	Field Name	Field Type	Length		Field Description
						Min	Max	
DTM01	374		M	Date/Time Qualifier	ID	3	3	"194" = Tax Period End Date
DTM02	373		X	Date	DT	8	8	"CCYYMMDD" = Tax Filing Period End
<b>DTM03 and DTM04 are not used.</b>								
DTM05	1250		X	Date Time Period Format Qualifier	ID	3	3	"RD8" = Range of Dates
DTM06	1251		X	Date Time Period	AN	17	17	"CCYYMMDD-CCYYMMDD" = Tax Filing Period Beginning and Ending Dates.
DTM~194~20050525\								
Syntax Notes: At least one of DTM02 or DTM05 is required. If either DTM05 or DTM06 is present, then the other is required.								
FTA Notes: If qualifier "194" is used in DTM01, then DTM05 and DTM06 are not used. If qualifier "683" is used in DTM01, then DTM02 is not used.								
NC Notes:								

Taxpayer Name Detail Name Segment							Pos. No. 0700	
Element ID	Elem Ref #	Sub-Ele Ref #	Field Status	Field Name	Field Type	Length		Field Description
						Min	Max	
N101	98		M	Entity Identification Code	ID	2	2	"TP" = Primary Taxpayer
N102	93		X	Name	AN	1	35	Taxpayer Name
N103	66		X	Identification Code Qualifier	ID	2	2	"24" = FEIN "34" = SSN "50" = BN – Canadian Business Number
N104	67		X	Identification Code	AN	2	18	Taxpayer's FEIN or SSN or BN
N1~TP~ABC Distributing~24~123456789\								
Syntax Notes: At least one of N102 or N103 is required. If either N103 or N104 is present, then the other is required.								
FTA Notes: N102, N103 and N104 are required.								
NC Notes: Taxpayer Name Detail is required								

Address Detail Address Information Segment							Pos. No. 0900	
Element ID	Elem Ref #	Sub-Ele Ref #	Field Status	Field Name	Field Type	Length		Field Description
						Min	Max	
N301	166		M	Address Information	AN	1	35	First Line Street Address
N302	166		O	Address Information	AN	1	35	Second Line Street Address
N3~123 C Street~PO Box 222\								
Syntax Notes: None								
FTA Notes: None								
NC Notes: Address Detail is required								

(The 820 mapping is not used at this time. Please contact the Division if you plan to pay by the 820 transaction.) 820 ACH Debit  
Payment

City, State, Zip Code Detail									
Location Geographic Segment									Pos. No. 1000
Element ID	Elem Ref #	Sub-Ele Ref #	Field Status	Field Name	Field Type	Length		Field Description	
						Min	Max		
N401	19		O	City Name	AN	2	30	Name of City	
N402	156		O	State code or Province	ID	2	2	State or Province Abbreviation	
N403	116		O	Postal (Zip) Code	ID	3	11	ZIP Code, ZIP Plus 4 Code or Foreign Postal code	
N404	26		O	Country	ID	2	3	Country Abbreviation (United States = USA)	
N4~Billings~MT~59401-2222~US\									
Syntax Notes: None									
FTA Notes: None									
NC Notes: City, State and Zip Code are required									

General Contact Person									
Administrative Communications Contact Segment									Pos. No. 1200
Element ID	Elem Ref #	Sub-Ele Ref #	Field Status	Field Name	Field Type	Length		Field Description	
						Min	Max		
PER01	366		M	Contact Function Code	ID	2	2	Contact Type Code: "CN" = General Contact	
PER02	93		O	Name	AN	1	35	Contact Name	
PER03	365		X	Communications Number Qualifier	ID	2	2	"TE" = Telephone Number	
PER04	364		X	Communications Number	AN	10	14	Voice Telephone Number	
PER05	365		X	Communications Number Qualifier	ID	2	2	"FX" = FAX Number	
PER06	364		X	Communications Number	AN	10	10	FAX Telephone Number	
PER07	365		X	Communications Number Qualifier	ID	2	2	"EM" = Electronic Mail	
PER08	364		X	Communications Number	AN	1	80	E-mail Address	
PER~CN~Allen Smith~TE~4069959988~FX~4069950329~EM~asmith@abc.com\									
Syntax Notes: If either PER03 or PER04 is present, then the other is required. If either PER05 or PER06 is present, then the other is required. If either PER07 or PER08 is present, then the other is required.									
FTA Notes: None									
NC Notes: General Contact information is required									



## Tax Payment Detail Loop

This segment is used to define the details of the payment. It is repeated each time the tax payment type code (TXP02) changes.

Tax Payment Segment								Pos. No. 2800	
Element ID	Elem Ref #	Sub-Ele Ref #	Field Status	Field Name	Field Type	Length		Field Description	
						Min	Max		
TXP01	325		M	Tax Identification Number	AN	1	20	Taxpayer Identification Number assigned by the taxing authority. (State Account Number)	
TXP02	1049		M	Tax Payment Type Code	ID	1	5	"05000" = Motor Fuels Taxes	
TXP03	373		M	Date	DT	8	8	Payment date (CCYYMMDD)	
TXP04	817		M	Tax Information Identification Number	AN	1	30	The taxing authority may define identifying tax information. "T" = Tax	
TXP05	1051		M	Tax Amount	N2	1	10	Tax Amount	
TXP06 through TXP09 are not used									
TXP10	1050		O	Taxpayer Verification	AN	1	6	Code agreed to by both parties to validate the sender.	
TXP~12345~05000~20051120~T~200000~~~~ab123\									
Syntax Notes:		None							
FTA Notes:		None							
NC Notes:		Please refer to payment procedures regarding the payment date.							

## Transaction Set Trailer Description

End of Transaction Set Trailer Segment								(Required) Pos. No. 2100	
Element ID	Elem Ref #	Sub-Ele Ref #	Field Status	Field Name	Field Type	Length		Field Description	
						Min	Max		
SE01	96	96	M	Number of Included Segments	N0	1	10	Number of segments (inserted by translator)	
SE02	329	329	M	Transaction Set Control Number	AN	4	9	Determined by Filer (same value in ST02, unique control number)	
SE~9~82000500\									
Syntax Notes:		None							
FTA Notes:		None							

End of Transaction Set

# Chapter 7 - 997 Functional Acknowledgment

## ANSI ASC X12 - 997 EDI Standard

RELEASE • 004030		TRANSACTION SET TABLES • 997				
<b>997 Functional Acknowledgment</b>						
FUNCTIONAL GROUP: FA						
This Draft Standard for Trial Use contains the format and establishes the data contents of the Functional Acknowledgment Transaction Set (997) for use within the context of an Electronic Data Interchange (EDI) environment. The transaction set can be used to define the control structures for a set of acknowledgments to indicate the results of the syntactical analysis of the electronically encoded documents. The encoded documents are the transaction sets, which are grouped in functional groups, used in defining transactions for business data interchange. This standard does not cover the semantic meaning of the information encoded in the transaction sets.						
<b>Table 1</b>						
NOTE	POS. NO.	SEQ. ID	NAME	REQ. DES.	MAX USE	LOOP REPEAT
N	0100	ST	Transaction Set Header	M	1	
N	0200	AK1	Functional Group Response Header	M	1	
			LOOP ID - AK2			999999
N	0300	AK2	Transaction Set Response Header	O	1	
			LOOP ID - AK3			999999
C	0400	AK3	Data Segment Note	O	1	
	0500	AK4	Data Element Note	O	99	
	0600	AK5	Transaction Set Response Trailer	M	1	
	0700	AK9	Functional Group Response Trailer	M	1	
	0800	SE	Transaction Set Trailer	M	1	
<b>NOTES</b>						
1/0100	These acknowledgments shall not be acknowledged, thereby preventing an endless cycle of acknowledgments of acknowledgments. Nor shall a Functional Acknowledgment be sent to report errors in a previous Functional Acknowledgment.					
1/0100	The Functional Group Header Segment (GS) is used to start the envelope for the Functional Acknowledgment Transaction Sets. In preparing the functional group of acknowledgments, the application sender's code and the application receiver's code, taken from the functional group being acknowledged, are exchanged; therefore, one acknowledgment functional group responds to only those functional groups from one application receiver's code to one application sender's code.					
1/0100	There is only one Functional Acknowledgment Transaction Set per acknowledged functional group.					
1/0200	AK1 is used to respond to the functional group header and to start the acknowledgment for a functional group. There shall be one AK1 segment for the functional group that is being acknowledged.					
1/0300	AK2 is used to start the acknowledgment of a transaction set within the received functional group. The AK2 segments shall appear in the same order as the transaction sets in the functional group that has been received and is being acknowledged.					
<b>COMMENTS</b>						
1/0400	The data segments of this standard are used to report the results of the syntactical analysis of the functional groups of transaction sets; they report the extent to which the syntax complies with the standards for transaction sets and functional groups. They do not report on the semantic meaning of the transaction sets (for example, on the ability of the receiver to comply with the request of the sender).					
DECEMBER 1999						
1						

8

## 997 EDI Map

<sup>8</sup> Data Interchange Standards Association, Inc. (DISA)

North Carolina is not using the 997 Functional Acknowledgement at this time. The 997 Functional Acknowledgment notifies the Information Provider that their EDI file was received. Translators create the 997 ACK when the translator processes an EDI file. This ACK is designed to pass back through the Information Provider/Transmitter's translator to notify the Information Provider/Transmitter that the EDI file was accepted, accepted with errors or rejected. If the EDI file is rejected, the Information Provider/Transmitter must fix the file and send a new EDI file.

## Transaction Set Header Description

Beginning of Transaction Set									(Required) Pos. No. 0100
Element	Elem	Sub-Ele	Field	Field Name	Field	Length		Field	
ID	Ref #	Ref #	Status		Type	Min	Max	Description	
ST01	143		M	Transaction Set Code	ID	3	3	Transaction Set Type "997"	
ST02	329		M	Transaction Set Control Number	AN	4	9	Translator defined (same value in SE02, unique control number)	

Functional Group Response Header									(Required) Pos. No. 0200
Element	Elem	Sub-Ele	Field	Field Name	Field	Length		Field	
ID	Ref #	Ref #	Status		Type	Min	Max	Description	
AK101	479		M/Z	Transaction Set Identifier Code	ID	2	2	Functional ID found in the GS segment (GS01) of the functional group being acknowledged. TF = 813	
AK102	28		M/Z	Group Control Number	N0	1	9	Functional group control number found in the GS segment (GS02) of the functional group being acknowledged.	

Transaction Set Response Header									(Optional) Pos. No. 0300
Element	Elem	Sub-Ele	Field	Field Name	Field	Length		Field	
ID	Ref #	Ref #	Status		Type	Min	Max	Description	
AK201	143		M/Z	Functional Identifier Code	ID	3	3	Transaction set ID found in the ST segment (ST01) of the transaction set being acknowledged. 813	
AK202	329		M/Z	Transaction Set Control Number	AN	4	9	Transaction set control number found in the ST segment (ST01) of the transaction set being acknowledged.	

Data Segment Note									(Optional) Pos. No. 0400
Element	Elem	Sub-Ele	Field	Field Name	Field	Length		Field	
ID	Ref #	Ref #	Status		Type	Min	Max	Description	
AK301	721		M	Segment ID Code	ID	2	3	Code defining the segment ID of the segment in error. See X12 guide for codes.	
AK302	719		M	Segment Position in Transaction Set	N0	1	6	The position of the segment counted from the transaction set header (ST). The transaction set header is 1.	
AK303	447		O	Loop Identifier Code	AN	1	6	Loop ID number given on the transaction set diagram.	
AK304	720		O	Segment Syntax Error Code	ID	1	3	1 = Unrecognized segment ID 2 = Unexpected segment 3 = Mandatory segment missing 4 = Loop occurs over maximum times 5 = Segment exceeds maximum use 6 = Segment not in defined transaction set 7 = Segment not in proper sequence 8 = Segment has data element errors	
<b>This segment defines segment syntax errors and the location of the segment. Refer to the X12 standards guide for further definition.</b>									

Data Element Note								(Optional) Pos. No. 0500
Element ID	Elem Ref #	Sub-Ele Ref #	Field Status	Field Name	Field Type	Length Min Max		Field Description
AK401	C030		M	Position in Segment				Code indicating relative position of element in error. See X12 guide for further information.
AK401	C030	722	M	Element Position in Segment	N0	1	2	
AK401	C030	1528	O	Component Data Element Position in Composite	N0	1	2	
AK401	C030	1686	O	Repeating Data Element Position	N0	1	4	
AK402	725		O	Data Element Reference Number	N0	1	4	Reference number used to locate the element in the Data Element Dictionary.
AK403	723		M	Data Element Syntax Error Code	ID	1	3	1 = Mandatory data element missing. 2 = Conditional required data element missing. 3 = Too many data elements 4 = Data element too short 5 = Data element too long 6 = Invalid character in data element 7 = Invalid code value 8 = Invalid date 9 = Invalid time 10 = Exclusion condition violated 12 = Too many repetitions 13 = Too many components
AK404	724		O/Z	Copy of Bad Data Element	AN	1	99	A copy of the bad data element.
<b>This segment defines Element syntax errors and the location of the segment. Refer to the X12 standards guide for further definition.</b>								

Transaction Set Response Trailer								(Required) Pos. No. 0600	
Element	Elem	Sub-Ele	Field	Field Name	Field	Length		Field	
ID	Ref #	Ref #	Status		Type	Min	Max	Description	
AK501	717		M	Transaction Set Acknowledgement Code	ID	1	1	A = Accepted E = Accepted but errors were noted M = Rejected, message authentication code failed R = Rejected W = Rejected, assurance failed validity tests X = Rejected, content after decryption could not be analyzed	
AK502	718		O	Transaction Set Syntax Error Code	ID	1	3	1 = Transaction set not supported	
AK503	718		O	Transaction Set Syntax Error Code	ID	1	3	2 = Transaction set trailer missing	
AK504	718		O	Transaction Set Syntax Error Code	ID	1	3	3 = Transaction set control number in header and trailer do not match.	
AK505	718		O	Transaction Set Syntax Error Code	ID	1	3	4 = Number of included segments does not match actual count	
AK506	718		O	Transaction Set Syntax Error Code	ID	1	3	5 = One or more segments in error 6 = Missing or invalid transaction set identifier 7 = Missing or invalid transaction set control number 8 = Authentication key name unknown 9 = Encryption key name unknown 10 = Requested service (authentication or encryption) not available. 11 = Unknown security recipient 12 = Incorrect message length (encryption only) 13 = Message authentication code failed 15 = Unknown security originator 16 = Syntax error in decryption text 17 = Security not supported 23 = Transaction set control number not unique within the functional group. 24 = S3E security end segment missing for S3S security. 25 = S3S security start segment missing for S3E security. 26 = S4E security end segment missing for S4S security 27 = S4S security start segment missing for S4E security end segment.	
<b>This segment acknowledges acceptance or rejection and reports errors. Refer to the X12 standards guide for further definition.</b>									

Functional Group Response Trailer									(Required) Pos. No. 0700
Element	Elem	Sub-Ele	Field	Field Name	Field	Length		Field	
ID	Ref #	Ref #	Status		Type	Min	Max	Description	
AK901	715		M	Functional Group Acknowledgement Code	ID	1	1	A = Accepted E = Accepted but errors were noted M = Rejected, message authentication code failed P = Partially Accepted, at least one transaction set was rejected R = Rejected W = Rejected, assurance failed validity tests X = Rejected, content after decryption could not be analyzed	
AK902	97		M	Number of Transaction Sets Included	N0	1	6	Number of Transaction Sets Included	
AK903	123		M	Number of Received Transaction Sets	N0	1	6	Number of Received Transaction Sets	
AK904	2		M	Number of Accepted Transaction Sets	N0	1	6	Number of Accepted Transaction Sets	
AK905	716		O	Functional Group Syntax Error Code	ID	1	3	1 = Functional group not supported 2 = Functional group version not supported 3 = Functional Group Trailer Missing 4 = Group control number in the functional group header and trailer do not agree. 5 = Number of included transaction sets does not match actual count. 6 = Group control number violates syntax 10 = Authentication key name unknown 11 = Encryption key name unknown 12 = Requested service (authentication or encryption) not available. 13 = Unknown security recipient 14 = Unknown security originator. 15 = Syntax error in decrypted text 16 = Security not supported 17 = Incorrect message length (encryption only) 18 = Message authentication code failed 23 = Transaction set control number not unique within the functional group. 24 = S3E security end segment missing for S3S security. 25 = S3S security start segment missing for S3E security. 26 = S4E security end segment missing for S4S security 27 = S4S security start segment missing for S4E security end segment.	
AK906	716		O	Functional Group Syntax Error Code	ID	1	3		
AK907	716		O	Functional Group Syntax Error Code	ID	1	3		
AK908	716		O	Functional Group Syntax Error Code	ID	1	3		
AK909	716		O	Functional Group Syntax Error Code	ID	1	3		

**This segment acknowledges acceptance or rejection of a functional group. Refer to the X12 standards guide for further definition.**

### Transaction Set Trailer Description

End of Transaction Set Trailer Segment									(Required) Pos. No. 0800
Element	Elem	Sub-Ele	Field	Field Name	Field	Length		Field	
ID	Ref #	Ref #	Status		Type	Min	Max	Description	
SE01	96	96	M	Number of Included Segments	N0	1	10	Number of segments (inserted by translator)	
SE02	329	329	M	Transaction Set Control Number	AN	4	9	Determined by Filer (same value in ST02, unique control number)	

SE~6~100\

#### End of Transaction Set

---

An example of a 997 ACK can be found below. This 997 contains ACKs for four 813s received in one ISA/GS envelope.

The file you receive will be a continuous stream of data; no carriage returns or line feeds.

ISA~00~0000000000~00~0000000000~ZZ~040539587000000~ZZ~123456789000000~990913~1512~|~00403~000000001  
~0~P~^\

GS~FA~040539587050~INTERNALROUTING~19990913~1510~1001~X~004030\

ST~997~0014\  
AK1~TF~52001\  
AK2~813~000000124\  
AK5~A\  
AK9~A~1~1~1\  
SE~6~0014\

ST~997~0015\  
AK1~TF~52001\  
AK2~813~000000125\  
AK5~A\  
AK9~A~1~1~1\  
SE~6~0015\

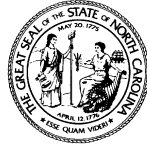
ST~997~0016\  
AK1~TF~52001\  
AK2~813~000000126\  
AK5~A\  
AK9~A~1~1~1\  
SE~6~0016\

ST~997~0017\  
AK1~TF~52001\  
AK2~813~000000127\  
AK3~N01~124~1\  
AK5~R\  
AK9~R~1~1~1\  
SE~7~0017\  
GE~4~1001\  
IEA~1~000000001\

---

# Appendix A - EDI Trading Partner Profile

---



North Carolina Department of Revenue

Roy Cooper  
Governor

Ronald Penny  
Secretary

## *Trading Partner Agreement For Electronic Data Exchange*

This Agreement is entered into by and between the North Carolina Department of Revenue ("Department") and \_\_\_\_\_ ("Licensee").

The Department and the Licensee wish to provide a means by which the Licensee will file its North Carolina Motor Fuel terminal operator, supplier and/or carrier return(s) by electronically transmitting data in substitution for conventional, paper-based documents and to assure that such return is legally valid and enforceable. In order to achieve this goal, the parties agree as follows:

1. **Terms and Amendments:** This Agreement shall be effective on the date it is signed by the Department and shall continue until terminated by either party. A copy of this properly signed Agreement shall be sent to the licensee. A party may terminate this Agreement by giving thirty (30) days written notice to the other party or by the cancellation of their Motor Fuels License. This Agreement may be amended at any time by executing a written addendum signed by both the Licensee and the Department.
2. **Standards:** The Licensee will electronically transmit return(s) to the Department according to the Department's standards and instructions that may be revised/updated by the Department from time to time. The Department will provide these standards and instructions to the Licensee in a reasonable time frame in advance of due dates to allow compliance with filing requirements.
3. **Transmission:** The Licensee shall access the Department's Internet website and upload the EDI file to the Department's secured web server.
4. **System Operations and Security Procedures:** The Licensee, at its own expense, shall provide and maintain the equipment, software, services and testing necessary for the Licensee to transmit the electronic return(s). The Department, at its own expense, shall provide and maintain the equipment, software, services and testing necessary for the Department to receive the electronic return(s). Each party shall use security procedures, which are reasonably sufficient to ensure that all transmissions of the return(s) are authorized and to protect its business records and data from improper access. In addition, the Licensee shall comply with all security procedures established and required by the Department.



5. **Signatures:** The Licensee's identification number and password, when included as part of the return filed pursuant to this Agreement, shall constitute the signature of the Licensee on the return as if such return were actually signed by the Licensee. Each Party shall adopt as its signature an electronic identification consisting of codes in each electronic transmission transmitted by such Party (the Signature). Each Party agrees that any signature of a Party affixed to or contained in any transmitted electronic transmission shall be sufficient to verify the Party originated such electronic transmission. Neither Party shall disclose to any unauthorized person the Signature of the other Party. [Note: An electronic signature is not effective as the original signature needed on the Trading Partner Agreement.]
6. **Receipt of Transmission:** An electronically submitted return shall be deemed to have been filed with the Department when the return, in the stipulated format, is accessible to the Department or the Department's third party service provider and meets the requirements of the Department. If the Licensee attempts to file and is unable to do so because the receipt computer is not available to receive a filing, the Department will not impose late filing penalties or interest provided the Licensee contacts the Department immediately when an access problem is identified and promptly remits the tax due.
7. **Acknowledgement of Transmission:** Upon receiving a successfully transmitted return from the Licensee, the Department or the Department's third party service provider will transmit an acknowledgement in return within one (1) business day from receipt of the Licensee's return. The acknowledgement will communicate only that the Department has received the Licensee's transmission and that it has either passed or failed the syntax verification. An acknowledgement does not imply any findings by the Department about the correctness of the return. A transmission that is received by the Department but is not in the stipulated format will not constitute a valid return.

The Licensee will receive a separate acknowledgement indicating that the transmission has passed or failed the Department's data validation process. It will be the Licensee's responsibility to retrieve the acknowledgement from the location specified by the Department.

8. **Garbled Transmissions:** If any transmission is received in an unintelligible or garbled form and the Department cannot identify the Licensee, no acknowledgement will be transmitted. The absence of an acknowledgement shall be treated as notice to the Licensee that the return was not received by the Department in the required format. The burden shall be on the Licensee to ensure that the Department receives a valid return in the required form and format within the time required.
9. **Record Retention:** The Licensee shall maintain records of the transactions covered by electronic filings for a period of not less than 3 years from the due date of the filing. Each Party agrees to maintain adequate back-up files to recreate electronic transmissions as required. Back-up files shall be subject to the terms of this Agreement to the same extent as the original data. Electronic transmissions shall be retained for such periods as required by relevant North Carolina statutes.
10. **Admissibility of Returns/Reports as Evidence:** A certified copy of any return may be introduced in paper form as evidence in any judicial or administrative proceeding by either party to the same extent and under the same conditions as any other business record. Neither party shall contest the admissibility of any return on the basis that it was not originated or maintained in paper form.
11. **Payments:** Any Licensee filing a return electronically under this Agreement shall make payment of taxes due by use of electronic payment regardless of the tax amount. The Licensee shall follow the procedures of the Department's Electronic Payment Application Program, which allows utilization of either automated clearinghouse (ACH) debit (a pay-by-phone program set up through the State's bank), ACH credit (a transaction arranged by the Taxpayer with its bank), or EDI 820 payments.

12. **Identifying Codes & Numbers:** To ensure proper identification of electronically transmitted returns, the parties will exchange the identifying qualifiers. Any changes in these qualifiers will be communicated to the other party before any transmission using the new qualifiers is sent.
13. **Certification:** An initial electronic transmission will not be authorized by either Party until subjected to reasonable testing to ensure compliance with the Department and its requirements. After the Department accepts the electronic transmission for production use, additional testing may be required when changes are made to the system environments, including but not limited to, installation of a new EDI translator or implementation of a new EDI version.
14. **Waiver:** The waiver of a breach of any provision of this Agreement shall not operate as or be construed to be a waiver of any subsequent breach of this Agreement. Any waiver shall operate as a waiver only with respect to the specific matter involved and in no way shall extend to any further matter.
15. **Entire Agreement:** This Agreement constitutes the final, entire, and complete agreement of the Parties with respect to the subject matter hereof; and supercedes any prior Agreement or understanding, whether written or oral, between or represented by the Parties relating to the subject matter.
16. **Amendment:** This Agreement shall not be changed, modified, or amended without the prior written consent of the Department.
17. **Governing Law:** This Agreement shall be governed by, and interpreted in accordance with the laws of the state of North Carolina.
18. **Assignment:** The Licensee shall not assign or transfer any right or interest in and to this Agreement without the prior written consent of the Department. Any purported assignment without the prior written consent of the Department shall be void and of no force or effect.

*The Trading Partner Agreement Partner Profile and signature box is on the next page.*

**Please complete the Trading Partner Agreement Partner Profile below.**

Company Name: \_\_\_\_\_

FEIN or SSN: \_\_\_\_\_

Business Contact Name: \_\_\_\_\_

Phone Number: \_\_\_\_\_ Fax Number: \_\_\_\_\_

Address: \_\_\_\_\_ City, State, Zip: \_\_\_\_\_

E-Mail Address: \_\_\_\_\_

EDI Coordinator Name: \_\_\_\_\_

Phone Number: \_\_\_\_\_ Fax Number: \_\_\_\_\_

Address: \_\_\_\_\_ City, State, Zip: \_\_\_\_\_

E-Mail Address: \_\_\_\_\_

EDI Technical Contact Name: \_\_\_\_\_

Phone Number: \_\_\_\_\_ Fax Number: \_\_\_\_\_

Address: \_\_\_\_\_ City, State, Zip: \_\_\_\_\_

E-Mail Address: \_\_\_\_\_

Vendor Contact Name: \_\_\_\_\_

Phone Number: \_\_\_\_\_ Fax Number: \_\_\_\_\_

Address: \_\_\_\_\_ City, State, Zip: \_\_\_\_\_

E-Mail Address: \_\_\_\_\_

**Access to the Internet to upload and download files from a secure site is required for participation in this program.**

**Licensee:**

Print Name of Licensee or Authorized Agent	
Signature of Licensee or Authorized Agent	Date

**Department:**

Print Name of Department's Authorized Agent	
Signature of Department's Authorized Agent	Date

**Return original, signed Trading Partner Agreement to: NC Department of Revenue, Excise Tax Division, EDI Coordinator, 3301 Terminal Drive, Suite 125 Raleigh, North Carolina 27604. Emails and/or faxes will not be accepted.**

## **Appendix B - Filing Procedures**

For filing procedures, please go to our website [www.ncdor.gov](http://www.ncdor.gov). Click on Taxes & Forms, and then click the link 'Motor Fuels Tax'. Under 'Electronic Services', click the 'Motor Fuels eFile Filing Instructions'. Scroll to the bottom of the page, then click on 'EDI - Uploading an EDI File' to view the PDF presentation. You may also access the PDF presentation by clicking this link: [EDI Filing Procedures](#). Questions regarding filing procedures may be referred to North Carolina Department of Revenue, Excise Tax Division

# Appendix C - North Carolina Schedules

<b>Report Type</b>	<b>Schedule Code</b>	<b>Description</b>
Gas 1202 - Supplier	1	Supplier Schedule of tax-paid receipts
Gas 1202 - Supplier	5A	Gallons sold to retailers, bulk end-users, unlicensed distributors, and company-owned/company-operated stations
Gas 1202 - Supplier	5C	Gallons sold to licensed suppliers, distributors, and importers
Gas 1202 - Supplier	5F	Dyed diesel and dyed kerosene gallons sold for taxable purposes
Gas 1202 - Supplier	6F	Dyed diesel and dyed kerosene gallons sold for non-taxable purposes
Gas 1202 - Supplier	6X	Gallons exchanged between licensed suppliers
Gas 1202 - Supplier	7	Gallons sold for export
Gas 1202 - Supplier	8	Gallons sold to the U.S. Government
Gas 1202 - Supplier	9A	Gallons sold to the State of North Carolina
Gas 1202 - Supplier	9C	Gallons sold to a N.C. local board of education
Gas 1202 - Supplier	9E	Gallons sold to a N.C. county, municipal corporation or hospital authority
Gas 1202 - Supplier	9F	Gallons sold to a N.C. charter school
Gas 1202 - Supplier	9G	Gallons sold to a N.C. community college
Gas 1204 – Terminal Operator	15A	Terminal operator schedule of receipts
Gas 1204 – Terminal Operator	15B	Terminal operator schedule of disbursements
Gas 1301 – Transporter	14A	Gallons of motor fuels loaded at a North Carolina terminal or bulk plant and delivered to another state
Gas 1301 – Transporter	14B	Gallons of motor fuels loaded at an out-of-state terminal or bulk plant and delivered in North Carolina
Gas 1301 – Transporter	14C	Gallons of motor fuels loaded at a North Carolina terminal or bulk plant and delivered in North Carolina

# Appendix D - North Carolina Product Codes

<b>Product Code</b>	<b>Description</b>
054	Liquefied Propane Gas (LPG)
065	Gasoline
072	Kerosene - Dyed
122	Blending Components
123	Fuel Alcohol
124	Gasohol
125	Aviation Gasoline
130	Jet Fuel
142	Kerosene - Undyed
160	Diesel - Undyed
170	Biodiesel – Undyed
171	Biodiesel – Dyed
224	Compressed Natural Gas (CNG)
225	Liquefied Natural Gas (LNG)
226	Diesel – High Sulfur Dyed
227	Diesel – Low Sulfur Dyed

---

# Appendix E - Summary Codes / TIA Codes

## Summary Code and TIA Code Usage

Summary and TIA codes are used for the following purposes (See complete list of codes below.):

### 813 Map

1. TIA code 5001 (Total Net Reported) is a check value for determining if all information is included in the EDI file.
2. TOR – Terminal Operator Report or SDR - Supplier/Distributor Report - TIA code 5002 (Physical Inventory) is used to report Ending and/or Beginning Inventory.
3. SDR – Supplier/Distributor Report – TIA code 5003 (Total Due) is a check value used to acknowledge and validate tax liability or taxable gallons.
4. CCR – Common Carrier Report – TIA code 5004 (Total Net Transported) is a check value used to acknowledge and validate the report.
5. SUM - Summary Code and TIA codes are used for identifying information not found in schedules or able to be derived from the schedules. The SUM loop provides a looping structure allowing multiple TIAs in a uniform format
6. Schedules – TIA 5005 (Net), 5006 (Gross) and 5007 (Billed) are used to report bill of lading volume details or further define summary detail.
7. Summary codes are defined and utilized for both quantity and money. The TIA segment of the summary has elements for both quantity and monetary values.

### 820 Map

No TIA or summary codes used.

---

## Summary Codes

---

- S01 Inventory**
- S01A Net Gains / Losses
  - S01B Casualty Loss
  - S01C Product Transfer – Disbursement
  - S01D Product Transfer – Receipt
  - S01E Meter Test – Disbursement
  - S01F Meter Test - Receipt
- S02 Taxes / Fees**
- S02A Tax
  - S02B Transfer / Lust Fee
  - S02C Inspection Fee
  - S02D Other Environmental Fee
  - S02E Gaseous Permit Fee
- S03 Credit**
- S03A Tax Credit
    - S03A01 Collection Allowance (*IN – February 2002*)
  - S03B Fee Credit
    - S03B01 Transfer Fee Credit (*MO – September 2001*)
    - S03B02 Inspection Fee Credit (*MO – September 2001*)
  - S03C Allowance
- S04 Bad Debt Write-off**
- S04A Tax Bad Debt Write-off
  - S04B Fee Bad Debt Write-off
- S05 General Return**
- S05A Gallons/Liters Refined, Distilled or produced
  - S05B Petroleum product repackaged into containers of 55 gallons or less
  - S05C Ethanol Blended with Gasoline  
(*S05C is being phased out as of September 2005, see S05M01*)
  - S05D Product Delivered
  - S05E Other petroleum products first sold, offered for sale, or used in state (*NB*)
  - S05F Total gallons of Motor Vehicle fuel first sold, offered for sale or used in state (*NB*).
  - S05G Untaxed diesel used in a licensed vehicle
  - S05H Kerosene blended with diesel and used in a licensed vehicle.  
(*S05H is being phased out as of September 2005, see S05M02*)
  - S05I Other exempt removals (*CA – May 2001*)
  - S05J Approved for deduction (*MS – January 2004*)
  - S05K Taxable sales total dollar amount (*ND – January 2004*)
  - S05L Taxable sales gallons multiplied by the average sales price for a defined period  
(*ND – January 2004*)
  - S05M Product Blended
    - S05M01 Product Blended with Gasoline
    - S05M02 Product Blended with Undyed Diesel
    - S05M03 Product Blended with Dyed Diesel
-



**FTA Uniformity TIA Codes**

The data represented by these TIA codes is not derivable from schedules or represents a check value.		
5000	Not used	
5001	Total Net Reported	Header
5002	Net Physical Inventory	TOR, SDR
5003	Total Due	SDR
5004	Total Net Transported	CCR
5005	Net	SCH, SUM
5006	Gross	SCH, SUM
5007	Billed	SCH, SUM
5008	Interest	SUM
5009	Penalty	SUM
5010	Confidential Information	Header
5011- 5199	<b>Not used</b>	

# Appendix F - Transaction Type Mode Codes

North Carolina Transaction Type Mode Codes	
Code	Description
B	Barge
BA	Book Adjustment
CE	Summary Information
J	Truck
PL	Pipeline
R	Railroad
S	Ship
ST	Stationary Transfer

The X12 standard requires 2 characters in the field using this code. When a single character is used, left justify and pad with a space.

**Appendix G - USA States,  
Canadian Provinces/  
Territories and  
Mexican States  
Codes**

<b>United States of America (US) State</b>	<b>Abbreviation</b>	<b>Canadian (CA) Province/Territory</b>	<b>Abbreviation</b>
Alabama	AL	Alberta	AB
Alaska	AK	British Columbia	BC
Arizona	AZ	Manitoba	MB
Arkansas	AR	New Brunswick	NB
California	CA	Newfoundland	NF
Colorado	CO	Northwest Territory	NT
Connecticut	CT	Nova Scotia	NS
Delaware	DE	Nunavut	NU
District of Columbia	DC	Ontario	ON
Florida	FL	Prince Edward Island	PE
Georgia	GA	Quebec	QC
Hawaii	HI	Saskatchewan	SK
Idaho	ID	Yukon Territory	YT
Illinois	IL		
Indiana	IN	<b>Mexican (MX) State</b>	<b>Abbreviation</b>
Iowa	IA	Aguascalientes	AG
Kansas	KS	Baja California	BJ
Kentucky	KY	Baja California Sur	BS
Louisiana	LA	Campeche	CP
Maine	ME	Chiapas	CH
Maryland	MD	Chihuahua	CI
Massachusetts	MA	Coahuila	CU
Michigan	MI	Colima	CL
Minnesota	MN	Distrito Federal	DF
Mississippi	MS	Durango	DG
Missouri	MO	Guanajuato	GJ
Montana	MT	Guerrero	GR
Nebraska	NE	Hidalgo	HG
Nevada	NV	Jalisco	JA
New Hampshire	NH	Mexico	EM
New Jersey	NJ	Michoacan	MH
New Mexico	NM	Morelos	MR
New York	NY	Nayarit	NA
North Carolina	NC	Nuevo Leon	NL
North Dakota	ND	Oaxaca	OA
Ohio	OH	Puebla	PU
Oklahoma	OK	Queretaro	QA
Oregon	OR	Quintana Roo	QR
Pennsylvania	PA	San Luis Potosi	SL
Rhode Island	RI	Sinaloa	SI
South Carolina	SC	Sonora	SO
South Carolina	SD	Tabasco	TA
Tennessee	TN	Tamaulipas	TM
Texas	TX	Tlaxcala	TL
Utah	UT	Veracruz	VZ
Vermont	VT	Yucatan	YC
Virginia	VA	Zacatecas	ZT
Washington	WA		
West Virginia	WV		
Wisconsin	WI		
Wyoming	WY		

# Appendix H - Open

Appendix H is open for clarification of North Carolina specific procedures.

# Appendix I - Amended Returns

## **What is an amended return?**

An amended return is any data reported to the Department that adjusts or corrects an original tax filing. The filer may amend a return by filing a supplemental return.

## **How should I file an amended return?**

If the original return was filed on paper, then the amended must be filed by paper. If the original was submitted by EDI, then the amended must be submitted by EDI or via web. Note, after you begin production EDI filing, all returns (both original and amended) must be filed via EDI or web.

## **Can I put amendments for different periods in one envelope?**

No, amendments for different periods should be submitted in separate envelopes. Each file name carries the period covered of the file so it can be uniquely identified.

## **What information is needed when filing an Amended return?**

The Department requires only the amended transaction(s) be filed along with all required summary (TIA) segments regardless of whether or not there has been a change in the summary value. Required Summary values, which have not changed, should be sent with a zero value. Summary values that have changed should indicate the change in value. For example, if the original return was sent with a penalty of \$15 but the correct value is \$10, the amended return should include a penalty value of -5.

**Sometimes our back-office systems process a schedule transaction with a bill of lading date for a prior filing period, but we have already filed that return with the Department. How should we handle these late loads?** The late loads must be reported by amending the return in which the activity occurred. Returns submitted via EDI in NC are not capable of accepting schedule transactions with a bill of lading date for a prior filing period. Late loads may not be included with current period schedule transactions. Activity must be reported in the filing period in which it occurred.

## **How are administrative discounts determined when filing an amended return?**

The total administrative discount across all returns for a filing period, i.e., the original return and all amendments, is not to exceed \$8,000.

# Appendix J - Sample EDI Files

## Gas-1202 Motor Fuel Supplier Return (SDR)

(Formatted with carriage returns for viewing – in an actual filing, carriage returns would be omitted.)

**Note: The Motor Fuel Supplier Return should be within its own ST/SE loop.**

```

ISA~00~          ~00~          ~ZZ~123456789          ~ZZ~NCMOTORFUELS
~051116~1619~|~00403~000001763~0~T~^\  

GS~TF~12345678~NCMOTORFUELS~20051116~161945~1764~X~004030\  

ST~813~1765~1.0\  

BTI~T6~050~47~NCMOTORFUELS~20051116~FUEL~24~123456789~49~12345678901~SV~Zy0000001~00\  

DTM~194~20051031\  

TIA~5001~57214~GA\  

N1~TP~Motor Fuel Company\  

N3~1234 Any Street~P.O. Box 47\  

N4~Raleigh~NC~27600~US\  

PER~CN~General Smith~TE~2225551111~FX~2225552222~EM~General@MotorFuelCo.com\  

PER~EA~EDI Jones~TE~2225551111~FX~2225552222~EM~EDI@MotorFuelCo.com\  

TFS~T2~SDR\  

REF~55~1\  

TIA~5003~21766.67~57214~GA\  

TFS~T3~S02~94~CE\  

REF~55~2\  

FGS~S\  

REF~55~3\  

TIA~5005~21766.67\  

TIA~5008~0\  

TIA~5009~0\  

TFS~T3~S02A~PG~065~94~CE\  

REF~55~4\  

FGS~S\  

REF~55~5\  

TIA~5005~13334.53\  

TFS~T3~S02A~PG~160~94~CE\  

REF~55~6\  

FGS~S\  

REF~55~7\  

TIA~5005~8312.54\  

TFS~T3~S02C~PG~065~94~CE\  

REF~55~8\  

FGS~S\  

REF~55~9\  

TIA~5005~85.70\  

TFS~T3~S02C~PG~160~94~CE\  

REF~55~10\  

FGS~S\  

REF~55~11\  

TIA~5005~53.42\  

TFS~T3~S02C~PG~226~94~CE\  

REF~55~12\  

FGS~S\  

REF~55~13\  

TIA~5005~2.49\  

TFS~T3~S03A01~PG~065~94~CE\  

REF~55~14\  

FGS~S\  

REF~55~15\  

TIA~5005~13.56\  

TFS~T3~S03A01~PG~160~94~CE

```

REF~55~16\  
 FGS~S\  
 REF~55~17\  
 TIA~5005~8.45\  
 TFS~T3~S03B02~PG~065~94~CE\  
 REF~55~18\  
 FGS~S\  
 REF~55~19\  
 TIA~5005~346.00\  
 TFS~T3~S03B02~PG~160~94~CE\  
 REF~55~20\  
 FGS~S\  
 REF~55~21\  
 TIA~5005~216.00\  
 TFS~T3~S03B02~PG~226~94~CE\  
 REF~55~22\  
 FGS~S\  
 REF~55~23\  
 TIA~5005~10.00\  
 TFS~T3~S03C~PG~065~94~CE\  
 REF~55~24\  
 FGS~S\  
 REF~55~25\  
 TIA~5005~346.00\  
 TFS~T3~S03C~PG~160~94~CE\  
 REF~55~26\  
 FGS~S\  
 REF~55~27\  
 TIA~5005~216.00\  
 TFS~T3~1~PG~065~94~J \  
 REF~55~28\  
 N1~OT~~TC~T62TN9999\  
 N1~SE~A FUEL SELLER INC~24~11133311101\  
 N1~CA~A FUEL TRANSPORTER INC~24~33322233301\  
 N1~ST~NC\  
 N4~MORRISTOWN~NC\  
 FGS~D~BM~1075682\  
 REF~55~29\  
 DTM~095~20120104\  
 TIA~5005~~~7516~GA\  
 TIA~5006~~~7481~GA\  
 TIA~5007~~~7516~GA\  
 FGS~D~BM~1075682\  
 REF~55~30\  
 DTM~095~20120104\  
 TIA~5005~~~6647~GA\  
 TIA~5006~~~6591~GA\  
 TIA~5007~~~6647~GA\  
 FGS~D~BM~1075994\  
 REF~55~31\  
 DTM~095~20120105\  
 TIA~5005~~~8874~GA\  
 TIA~5006~~~8808~GA\  
 TIA~5007~~~8874~GA\  
 TFS~T3~5C~PG~124~94~J \  
 REF~55~32\  
 N1~OT~~TC~T62TN9999\  
 N1~CA~FUEL TRANSPORTER INC~24~33322233301\  
 N1~BY~FUEL BUYER INC~24~12312312301\  
 N1~ST~NC\  
 N4~MORRISTOWN~NC\  
 FGS~D~BM~1078045\  
 REF~55~33\



DTM~095~20120112\  
TIA~5005~~~11588~GA\  
TIA~5006~~~11521~GA\  
TIA~5007~~~11588~GA\  
TFS~T3~5C~PG~160~94~J \  
REF~55~34\  
N1~OT~~TC~T62TN9999\  
N1~CA~FUEL TRANSPORTER INC~24~33322233301\  
N1~BY~FUEL BUYER INC~24~12312312301\  
N1~ST~NC\  
N4~GAINESVILLE~NC\  
FGS~D~BM~311634\  
REF~55~35\  
DTM~095~20120112\  
TIA~5005~~~15032~GA\  
TIA~5006~~~15007~GA\  
TIA~5007~~~15032~GA\  
TFS~T3~5A~PG~160~94~J \  
REF~55~36\  
N1~OT~~TC~T62TN9999\  
N1~CA~FUEL TRANSPORTER INC~24~33322244401\  
N1~BY~FUEL BUYER INC~24~12312312301\  
N1~ST~NC\  
N4~MORRISTOWN~NC\  
FGS~D~BM~1078052\  
REF~55~37\  
DTM~095~20120112\  
TIA~5005~~~3020~GA\  
TIA~5006~~~3008~GA\  
TIA~5007~~~3020~GA\  
FGS~D~BM~1079963\  
REF~55~38\  
DTM~095~20120119\  
TIA~5005~~~3533~GA\  
TIA~5006~~~3511~GA\  
TIA~5007~~~3533~GA\  
TFS~T3~6F~PG~227~94~J \  
REF~55~39\  
N1~OT~~TC~T62TN9989\  
N1~CA~FUEL TRANSPORTER INC~24~33322233301\  
N1~BY~FUEL BUYER INC~24~12312312301\  
N1~ST~NC\  
N4~CARY~NC\  
FGS~D~BM~266922\  
REF~55~40\  
DTM~095~20120119\  
TIA~5005~~~1004~GA\  
TIA~5006~~~1000~GA\  
TIA~5007~~~1004~GA\  
SE~163~1765\  
GE~1~1764\  
IEA~1~000001763\

**Gas-1202 Motor Fuel Supplier Return (SDR) – No Activity (Zero Return)**

(Formatted with carriage returns for viewing – in an actual filing, carriage returns would be omitted.)

ISA~00~                    ~00~                    ~ZZ~123456789                    ~ZZ~NCMOTORFUELS  
 ~051116~1619~|~00403~000001763~0~T~^\  
 GS~TF~12345678~NCMOTORFUELS~20051116~161945~1764~X~004030\  
 ST~813~1765~1.0\  
 BTI~T6~050~47~NCMOTORFUELS~20051116~FUEL~24~123456789~49~12345678901~SV~Zy0000001~00\  
 DTM~194~20051031\  
 TIA~5001~0~GA\  
 N1~TP~Motor Fuel Company\  
 N3~1234 Any Street~P.O. Box 47\  
 N4~Raleigh~NC~27600~US\  
 PER~CN~General Smith~TE~2225551111~FX~2225552222~EM~General@MotorFuelCo.com\  
 PER~EA~EDI Jones~TE~2225551111~FX~2225552222~EM~EDI@MotorFuelCo.com\  
 TFS~T2~SDR\  
 REF~55~1\  
 REF~BE~1\  
 SE~13~1765\  
 GE~1~1764\  
 IEA~1~000001763\

## Gas-1202 Motor Fuel Supplier Return (SDR) –Amended Filing

(Formatted)

with carriage returns for viewing – in an actual filing, carriage returns would be omitted.)

**Note: The Motor Fuel Supplier Return should be within its own ST/SE loop.**

```

ISA~00~                ~00~                ~ZZ~123456789          ~ZZ~NCMOTORFUELS
~051116~1619~|~00403~000001763~0~T~^\  

GS~TF~12345678~NCMOTORFUELS~20051116~161945~1764~X~004030\  

ST~813~1765~1.0\  

BTI~T6~050~47~NCMOTORFUELS~20051116~FUEL~24~123456789~49~12345678901~SV~Zy0000001~~CO\  

DTM~194~20051031\  

TIA~5001~57214~GA\  

N1~TP~Motor Fuel Company\  

N3~1234 Any Street~P.O. Box 47\  

N4~Raleigh~NC~27600~US\  

PER~CN~General Smith~TE~2225551111~FX~2225552222~EM~General@MotorFuelCo.com\  

PER~EA~EDI Jones~TE~2225551111~FX~2225552222~EM~EDI@MotorFuelCo.com\  

TFS~T2~SDR\  

REF~55~1\  

TIA~5003~303.14~~811~GA\  

TFS~T3~S02~~~94~CE\  

REF~55~2\  

FGS~S\  

REF~55~3\  

TIA~5005~303.14\  

TIA~5008~0\  

TIA~5009~0\  

TFS~T3~S02A~PG~065~94~CE\  

REF~55~4\  

FGS~S\  

REF~55~5\  

TIA~5005~301.13\  

TFS~T3~S02C~PG~065~94~CE\  

REF~55~6\  

FGS~S\  

REF~55~7\  

TIA~5005~2.01\  

TFS~T3~S03B02~PG~065~94~CE\  

REF~55~8\  

FGS~S\  

REF~55~9\  

TIA~5005~8.00\  

TFS~T3~S03C~PG~065~94~CE\  

REF~55~10\  

FGS~S\  

REF~55~11\  

TIA~5005~8.00\  

TFS~T3~5A~PG~065~94~J \  

REF~55~12\  

N1~OT~~TC~T56NC2000\  

N1~CA~FUEL TRANSPORTER INC~24~33322244401\  

N1~BY~FUEL BUYER INC~24~12312312301\  

N1~ST~NC\  

N4~MONROE~NC\  

FGS~D~BM~611934\  

REF~55~13\  

DTM~095~20140226\  

TIA~5005~~~8033~GA\  

TIA~5006~~~8000~GA\  

TIA~5007~~~8033~GA\  

FGS~D~BM~611934\  

REF~55~14

```

DTM~095~20140226\  
TIA~5005~~~-7222~GA\  
TIA~5006~~~-7192~GA\  
TIA~5007~~~-7222~GA\  
SE~59~1765\  
GE~1~1764\  
IEA~1~000001763\

**Gas-1204 Motor Fuel Terminal Operator Return (TOR)**

(Formatted carriage)

with

returns for viewing – in an actual filing, carriage returns would be omitted.)

**Note: Create one ST-SE loop for each Terminal**

```

ISA~00~           ~00~           ~ZZ~123456789       ~ZZ~NCMOTORFUELS
~051116~1619~|~00403~000001763~0~T~^\\
GS~TF~12345678~NCMOTORFUELS~20051116~161945~1764~X~004030\\
ST~813~1765~1.0\\
BTI~T6~050~47~NCMOTORFUELS~20051116~FUEL~24~123456789~49~12345678901~SV~Zy0000001~00\\
DTM~194~20051031\\
TIA~5001~~~31275~GA\\
N1~TP~Motor Fuel Company\\
N3~1234 Any Street~P.O. Box 47\\
N4~Raleigh~NC~27600~US\\
PER~CN~General Smith~TE~2225551111~FX~2225552222~EM~General@MotorFuelCo.com\\
PER~EA~EDI Jones~TE~2225551111~FX~2225552222~EM~EDI@MotorFuelCo.com\\
TFS~T2~TOR~~~TC~T56NC7777\\
REF~55~1\\
DTM~184~20051031\\
TIA~5003~0~~0~GA\\
FGS~EI~PG~065\\
REF~55~2\\
TIA~5002~~~14875~GA\\
FGS~EI~PG~160\\
REF~55~3\\
TIA~5002~~~16643~GA\\
TFS~T3~15A~PG~065~94~PL\\
REF~55~4\\
N1~OT~~TC~T56NC7777\\
N1~ON~POSITION HOLDER II~24~777888999\\
N1~CA~FUEL PIPELINE~24~999999999\\
N1~DT~~TC~T56NC7777\\
FGS~D~BM~6343\\
REF~55~5\\
DTM~095~20051022\\
TIA~5005~~~560~GA\\
TIA~5006~~~560~GA\\
TIA~5007~~~560~GA\\
TFS~T3~15B~PG~160~94~J \\
REF~55~6\\
N1~OT~~TC~T56NC7777\\
N1~ON~POSITION HOLDER I~24~333444333\\
N1~CA~FUEL TRANSPORTER~24~999999999\\
N1~BY~BUYER ABCD~24~23423423400\\
N1~ST~NC\\
N4~LEXINGTON~NC\\
FGS~D~BM~110782\\
REF~55~7\\
DTM~095~20051028\\
TIA~5005~~~478~GA\\
TIA~5006~~~478~GA\\
TIA~5007~~~478~GA\\
FGS~D~BM~76747\\
REF~55~8\\
DTM~095~20051028\\
TIA~5005~~~325~GA\\
TIA~5006~~~325~GA\\
TIA~5007~~~325~GA\\
SE~52~1765\\
GE~1~1764\\
IEA~1~000001763\\

```



**Gas-1301 Motor Fuel Transporter Return (CCR)**

(Formatted with carriage returns for viewing – in an actual filing, carriage returns would be omitted.)  
 The Motor Fuel Transporter Return should be within its own ST/SE loop.

ISA~00~ ~00~ ~ZZ~123456789 ~ZZ~NCMOTORFUELS  
 ~051116~1619~|~00403~000001763~0~T~^\  
 GS~TF~12345678~NCMOTORFUELS~20051116~161945~1764~X~004030\  
 ST~813~1765~1.0\  
 BTI~T6~050~47~NCMOTORFUELS~20051116~FUEL~24~123456789~49~12345678901~SV~Zy0000001~00\  
 DTM~194~20051031\  
 TIA~5001~38000~GA\  
 N1~TP~Motor Fuel Company\  
 N3~1234 Any Street~P.O. Box 47\  
 N4~Raleigh~NC~27600~US\  
 PER~CN~General Smith~TE~2225551111~FX~2225552222~EM~General@MotorFuelCo.com\  
 PER~EA~EDI Jones~TE~2225551111~FX~2225552222~EM~EDI@MotorFuelCo.com\  
 TFS~T2~CCR\  
 REF~55~1\  
 TIA~5004~0.00~38000~GA\  
 TFS~T3~S02~94~CE\  
 REF~55~2\  
 FGS~S\  
 REF~55~3\  
 TIA~5009~50.00\  
 TFS~T3~14A~PG~160~94~R \  
 REF~55~4\  
 N1~OT~TC~T56NC9999\  
 N1~SE~SELLER X~24~55544455501\  
 N1~CI~ FUEL CONSIGNOR~24~333222333\  
 N1~CA~FUEL CARRIER~24~999999999\  
 N1~BY~FUEL BUYER~24~111221111\  
 N1~ST~SC\  
 N4~CHARLESTON~SC\  
 FGS~D~BM~32125\  
 REF~55~5\  
 DTM~095~20051003\  
 TIA~5005~30000~GA\  
 TIA~5006~30000~GA\  
 TIA~5007~30000~GA\  
 TFS~T3~14B~PG~160~94~J \  
 REF~55~6\  
 N1~OT~TC~T99SC0000\  
 N1~SE~SELLER X~24~55544455501\  
 N1~CI~ FUEL CONSIGNOR~24~333222333\  
 N1~CA~FUEL CARRIER~24~777889999\  
 N1~BY~FUEL BUYER~24~111221111\  
 N1~ST~NC\  
 N4~SPARTA~NC\  
 FGS~D~BM~32127\  
 REF~55~7\  
 DTM~095~20040610\  
 TIA~5005~8000~GA\  
 TIA~5006~8010~GA\  
 TIA~5007~8000~GA\  
 SE~48~1765\  
 GE~1~1764\  
 IEA~1~000001763\