

NC OneMap and Data-Driven Collaboration

Jeff Brown and Tim Johnson

NC Center for Geographic Information and Analysis

September 11, 2018



Topics

- Background on statewide GIS coordination
- Statewide geospatial data
- NC OneMap
- Examples of using GIS with addresses, parcels, and jurisdictions



The North Carolina Geographic Information Coordinating Council (GICC)



GICC

The Council is an organization of volunteers whose goals are to:

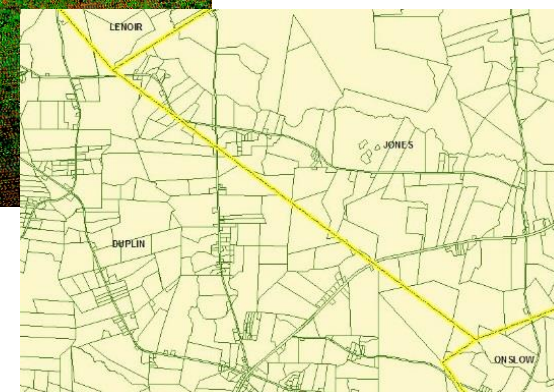
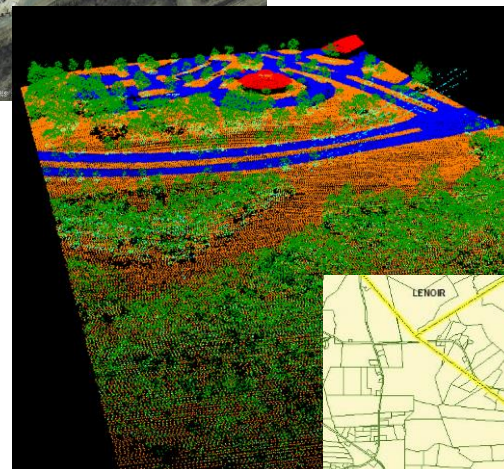
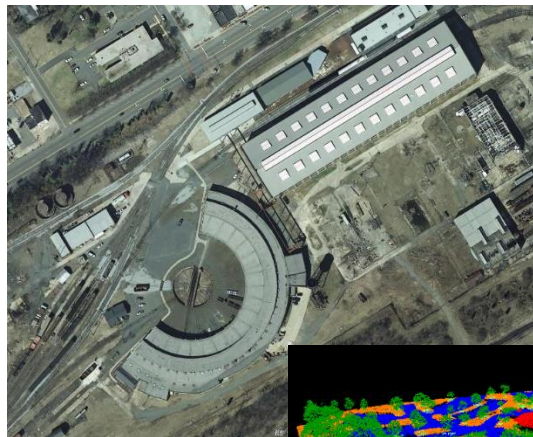
- **Collaborate** in geographic information and systems
- Improve the **quality**, access, cost-effectiveness and utility of North Carolina's geographic information and resources
- Promote geographic information as a **strategic** resource
- Efficiently collect, develop and use geographic information through voluntary exchange and **sharing** of data and technical know-how
- Explore, guide and provide a **framework** for coordination

Representing the Department of Revenue: Tony Simpson
Member and past GICC Chair: Stan Duncan



Data Drives Collaboration – the Framework

- Orthoimagery
- Elevation
- Roads
- Address points
- Parcel boundaries
- Jurisdictional boundaries
- Streams and water bodies
- Geodetic control



Good Data + Collaboration = Benefits for All

- Economic development
- Emergency management
- Forest management
- Recreation
- Transportation planning
- Equitable taxation
- And more



Annual Report, 2017-2020 and Beyond

Council emphasis:

- Data Sharing
- Local – State connections
- Meeting business needs
- Public access to the data

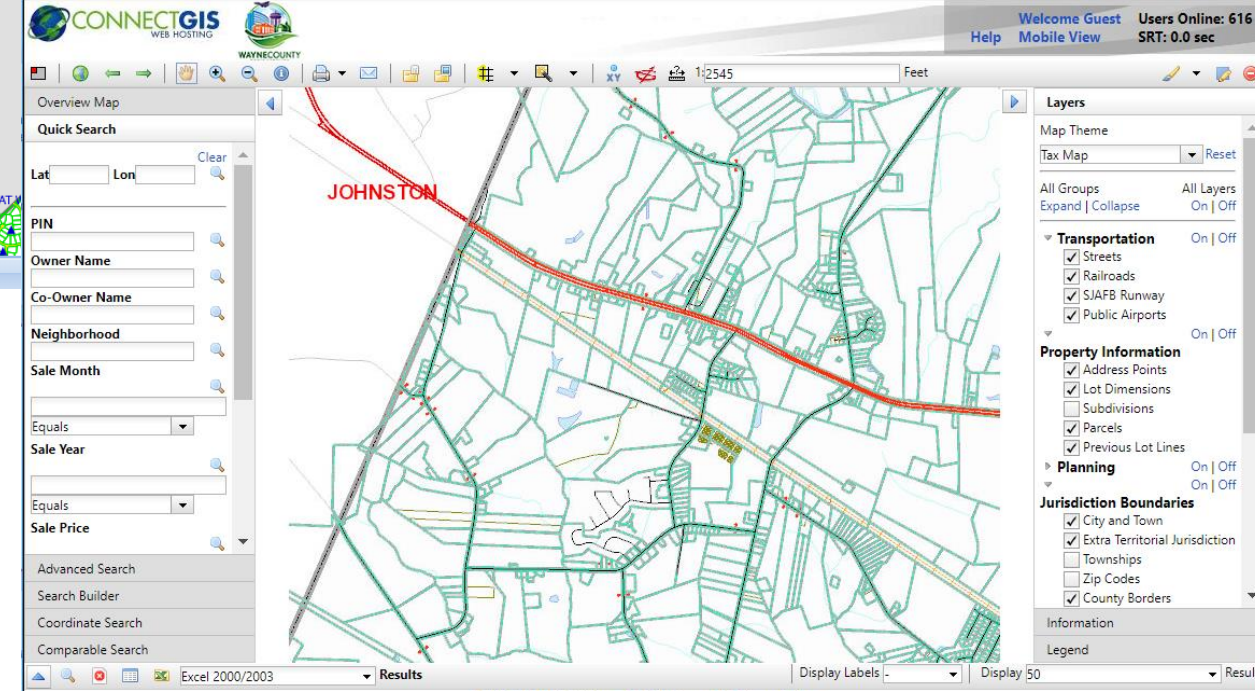
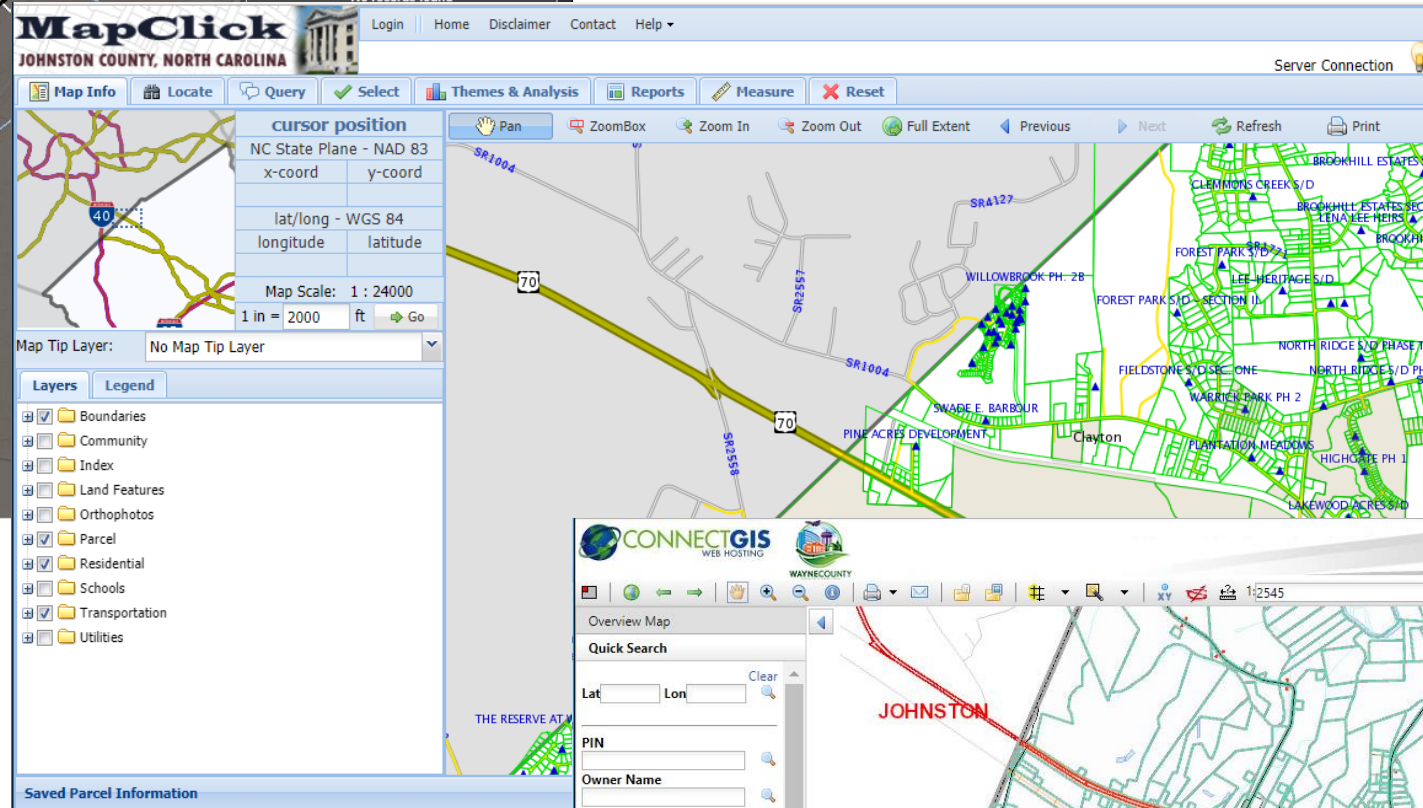
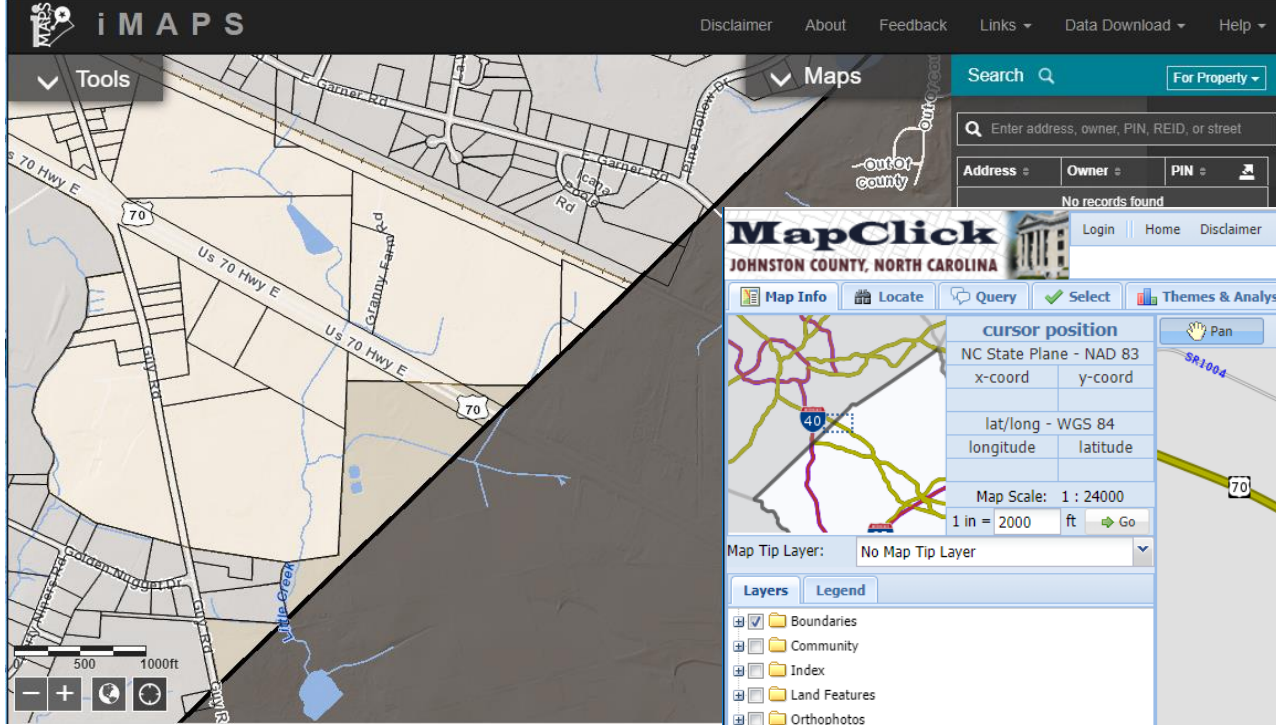
Future focus:

- Next Generation 911
- Census 2020 and after
- Enterprise Geospatial Data Management

Online GIS Maps

Gotta love the county web map viewer!

- Latest published geographic data
- Most detail
- Ready-made map
- Look-up location/property of interest
- Data download link and/or contact information
- 100 counties have map viewers



Parcels
Roads
Address points
Boundaries

...

But

Consumers may need to:

- Search and query across boundaries
- Get a multi-county or statewide picture
- Derive numbers or counts statewide
- Get data from a secondary source if a county is not online

Characteristics of Statewide Geospatial Data

- Complete, consistent, current, documented
- Statewide scope
- Easy discovery and access
- Authoritative, trusted, curated
- Meet many business needs

“Shopping” for Statewide Geospatial Data

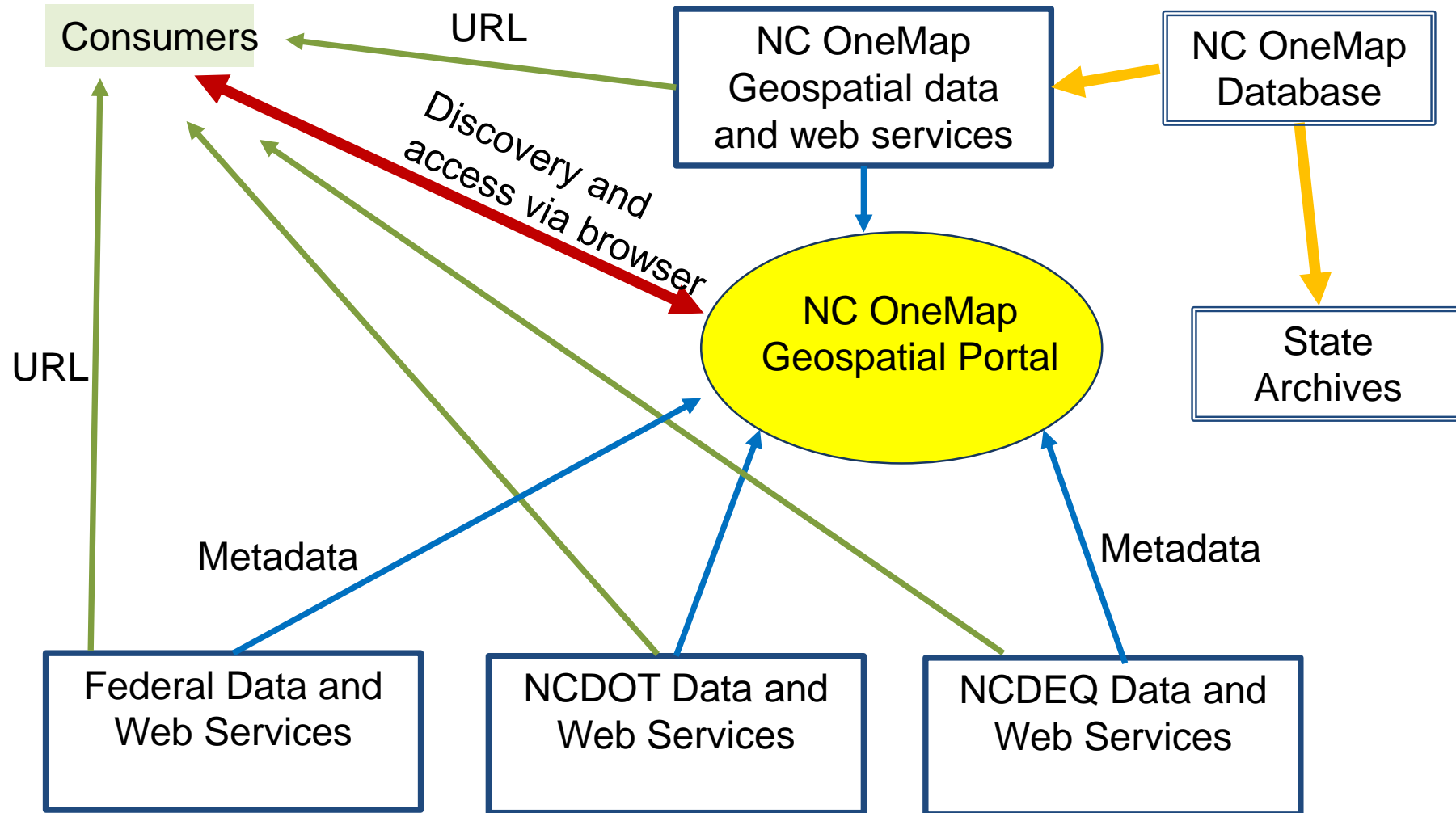
NC OneMap Database

- Maintained datasets
 - ✓ Orthoimagery
 - ✓ Address points
 - ✓ Parcels
- Copies of files maintained elsewhere
 - ✓ State owned land
 - ✓ Natural Heritage Program areas
 - ✓ Shellfish areas
- Derived products
 - ✓ Elevation model for shading, slope

Other Statewide Datasets

- NCDOT
 - ✓ Roads
 - ✓ Railroads
- NCDEQ
 - ✓ Streams
 - ✓ Watersheds
- NCDPS
 - ✓ Elevation
 - ✓ Floodplain maps

NC OneMap – Current Conceptual Design



NC OneMap Geospatial Portal Today...

A “first-stop” for

➤ **Data discovery**

- Search
- A -> Z list
- Geographic search

➤ **Data access**

- GIS files
- Web services

The screenshot displays the NC OneMap Geospatial Portal interface. At the top, the logo 'NC OneMap GeoSpatial Portal' is visible. Below the logo is a navigation bar with 'HOME', 'SEARCH', 'BROWSE', and 'DOWNLOAD IMAGERY'. A green banner contains a message: 'Please note some web services are now only accessible via HTTPS and require changes for existing connections. Get more detailed information from the NC OneMap blog.' Below this is a 'Find Resource...' search box with the text 'digital raster graphic' and a 'Search' button. To the right, a 'Most Recently Added/Updated' list includes items like 'USGS Stream Gauges', 'Railroads', '2016 North Carolina Digital Orthoimagery Service - ArcGIS Server', 'Submerged Aquatic Vegetation - SAV', and 'Johnston County, NC 2005 Digital Orthos'. Below this list is an API options section: 'API: GEORSS ATOM HTML FRAGMENT KML JSON CSV'. On the right side, a search results panel shows 'Results 1-9 of 9 record(s)'. The search criteria are 'Text: parcels' and 'Records shown from: This Site'. The 'WHEN' section has 'Intersecting' selected. The 'WHERE' section has 'Anywhere' selected. A map of North Carolina is shown with a red bounding box around the central region. Below the map is a list of search results, including 'NC OneMap Parcels with Statewide Standardized Attributes - Web Application', 'NC Parcel Boundaries and Standard Fields - ArcGIS Map Service', 'NC Parcel Boundaries and Standard Fields - Download', 'NC Parcel Boundaries and Standard Fields - ArcGIS Feature Service', 'Washington County, NC 2004 Digital Orthos', 'Brownfields Agreement Sites', 'Henderson County, NC 2001 Digital Orthos', 'Public Road Arcs, 4th Quarter 2016 - NC Department of Transportation', and 'Public Road Characteristics, 4th Quarter 2016 - NC Department of Transportation'. At the bottom of the page, the footer reads: ':: NC OneMap GeoSpatial Portal - Geographic Data Serving a Statewide Community ::'. In the bottom right corner, there is a logo for 'NC DIT'.

<http://data.nconemap.gov>



Expectations of the NC GIS Community

NC OneMap Requirements

- ✓ Fast
- ✓ Show extents of data
- ✓ Show concise metadata
- ✓ Show services with availability/status
- ✓ Keyword, browse, geographical searches
- ✓ Easy to use
- ✓ Transparent
- ✓ Reuse data without restriction
- ✓ Interoperable

“Open Data”

➤ **Files** to download and use with GIS software

- Store locally
- Check with source for updates
- Functionality depends on software
- Archive with project data

➤ **Web services** to consume in GIS software or applications

- Streaming from a server
- No local storage
- Streams the latest updated service
- Functionality varies (map service v. feature service)



QGIS (free)



AutoCad Civil 3D / Map 3D



Gaia 3 (free)



Bentley
Microstation

Bentley Microstation V8i

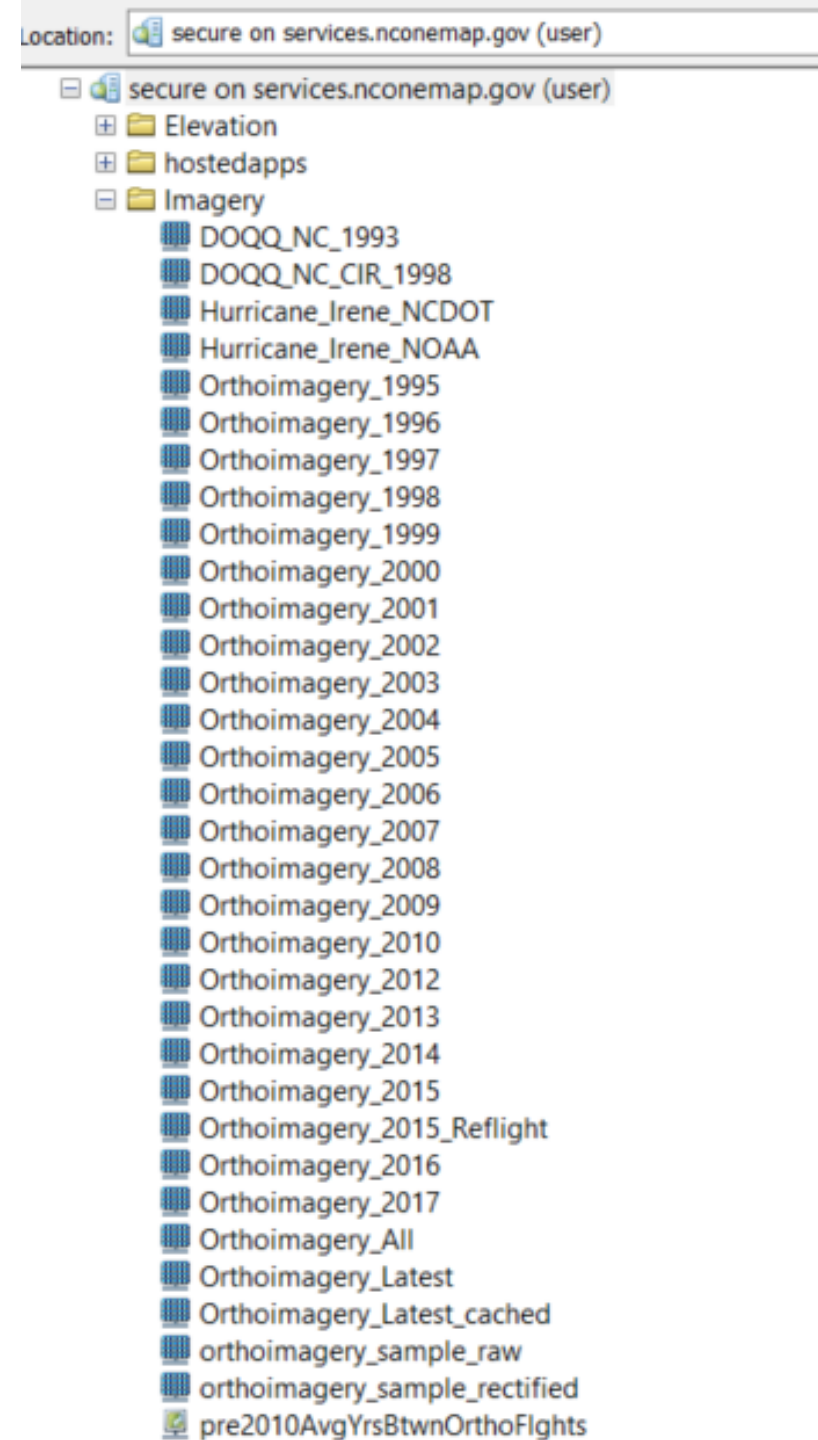


Esri ArcGIS



Orthoimagery

- Statewide Orthoimagery Program
 - 2010 to date
 - Statewide coverage
 - 6” resolution
 - True color, leaf-off
 - Updated - fly 25% every year
 - No area with imagery older than 4 yrs.
- Historical (1996 – 2009)
 - Various

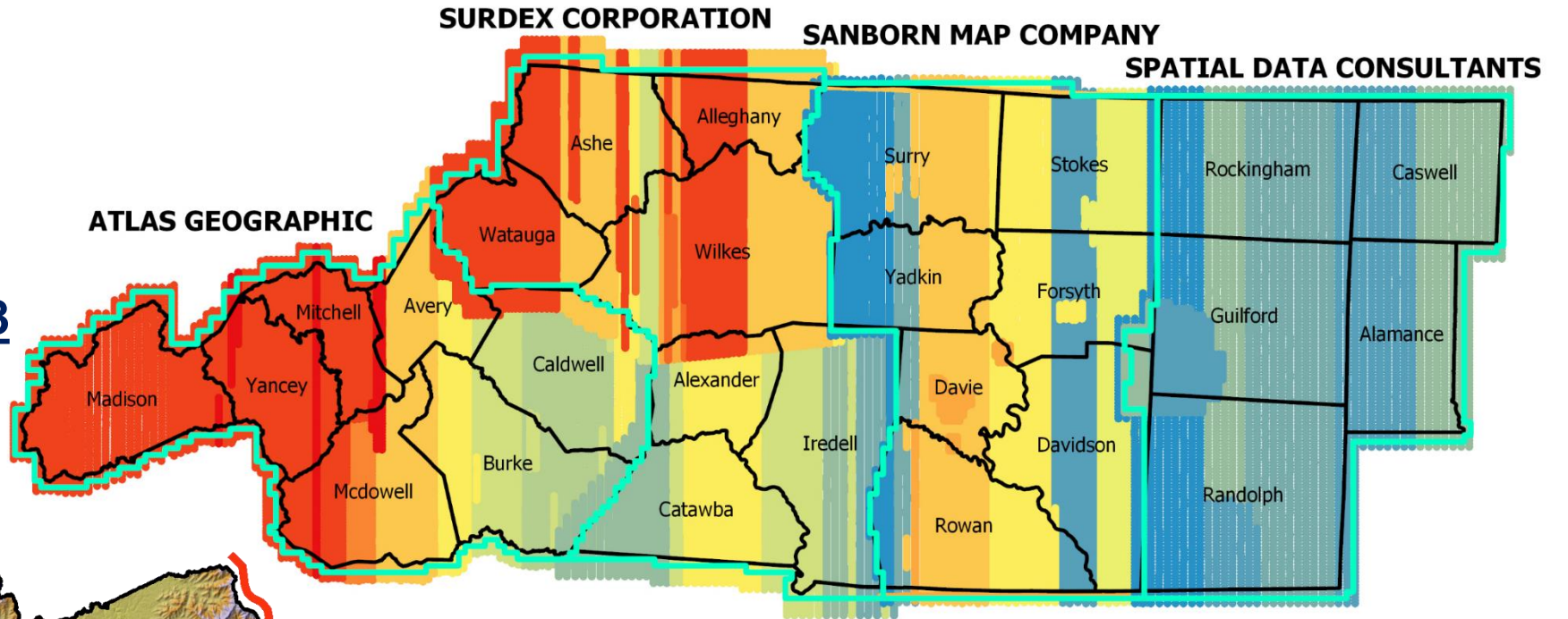


Orthoimagery Program

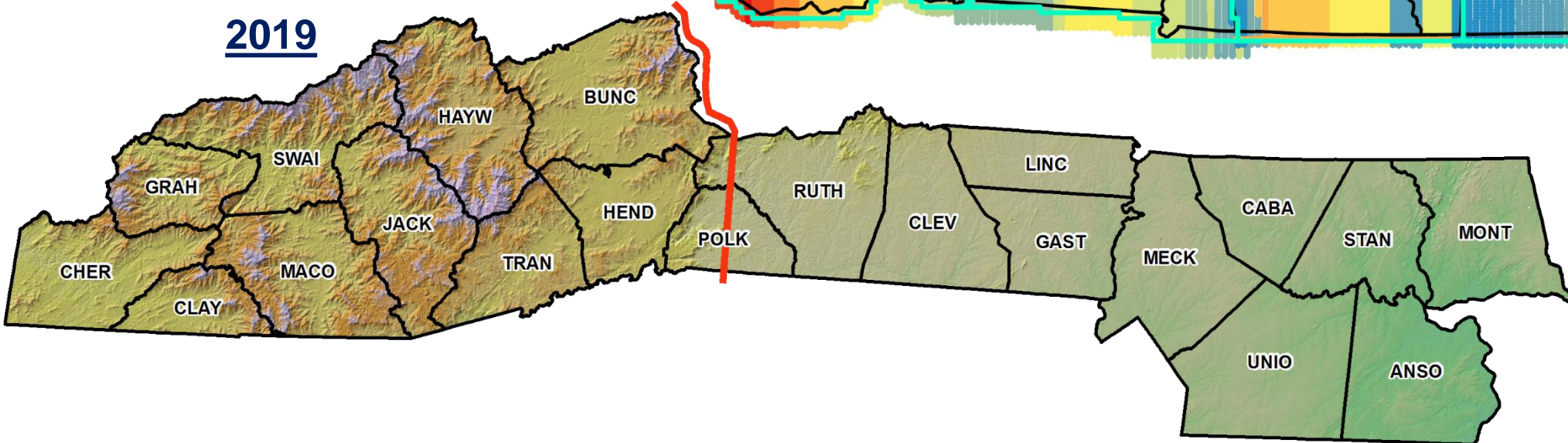
Imagery Acquisition Dates



2018



2019



Home

2017 imagery for the Eastern Piedmont region of NC is now available from the GeoPortal. Get more info from the [NC OneMap blog](#).

Find Resource...

Tutorial Videos

- [National Wetlands Inventory - Map Service](#)
- [NC OneMap Ortho Acquisition Related Products - Map Service](#)
- [NC Orthoimagery Latest Imagery Service \(Cache ArcGIS Server\)](#)
- [Post-Hurricane Irene Image Service - NOAA](#)
- [Post-Hurricane Irene Image Service - NCDOT](#)
- [NC OneMap Ortho Boundaries - Map Service](#)

How to use Esri based services



Most Recently Added/Updated Resources...

 Expand results

- [North Carolina Rail Track - 1st Quarter 2018 - North Carolina Department of Transportation](#)
- [Bridge Structure Locations, 1st Quarter 2018 - NC Department of Transportation](#)
- [North Carolina Rail Crossings - 1st Quarter 2018 - North Carolina Department of Transportation](#)
- [Public Road Routes, 1st Quarter 2018 - NC Department of Transportation](#)
- [Public Road Characteristics, 1st Quarter 2018 - NC Department of Transportation](#)

API: [GEORSS](#) [ATOM](#) [HTML](#) [FRAGMENT](#) [KML](#) [JSON](#) [CSV](#)

NC OneMap and YouTube Videos

1. Overview – searching for data and web services
2. What's new in the Geospatial Portal
3. How to use Esri based web services
4. How to use Open Geospatial Consortium (OGC) services
5. Search the Portal directly from the browser
6. How to download imagery
7. Use WMS services in Microstation
8. Use WMS services in AutoCAD
9. Use NC OneMap services with Carlson

NC OneMap YouTube Channel

NC OneMap

[Home](#) [Videos](#) [Playlists](#) [Channels](#) [Discussion](#) [About](#)

Finding Data in the GeoPortal



NC OneMap GeoSpatial Portal Introduction

NC OneMap
2,810 views • 4 years ago



NC OneMap Updates

NC OneMap
2,046 views • 4 years ago



NC OneMap GeoSpatial Portal - Downloading Imagery

NC OneMap
2,177 views • 4 years ago



NC OneMap GeoSpatial Portal OGC Services

NC OneMap
531 views • 4 years ago



NC OneMap GeoSpatial Portal Browser Search

NC OneMap
141 views • 4 years ago

How to Use Map Services from NC OneMap in Client Applications



NC OneMap GeoSpatial Portal ESRI based services

NC OneMap
1,395 views • 4 years ago



ArcGIS Map Services

CarlsonSoftware
857 views • 5 years ago



wmsMicrostation

NC OneMap
557 views • 4 years ago



wmsAutoCAD1

NC OneMap
430 views • 4 years ago

NC Orthoimagery



2017 VOICE Webinar

NC OneMap
7 months ago • 150 views

Training webinar for the 2017 North Carolina Orthoimagery Project covering 26 counties in the piedmont region of North Carolina. This webinar covers topics related to the Quality Review...

Search

Text:



Records shown from: This Site

Click here to select different site(s) or configure search.

[More Search Options](#)

[Clear](#)

WHEN

Intersecting Fully within

Start Date: (yyyy-mm-dd)

Results 1-10 of 150 record(s)

[1](#) [2](#) [3](#) [4](#) [5](#) [>](#) [Last](#)

Expand Results

[Zoom To Results](#) [Zoom To Search Area](#)



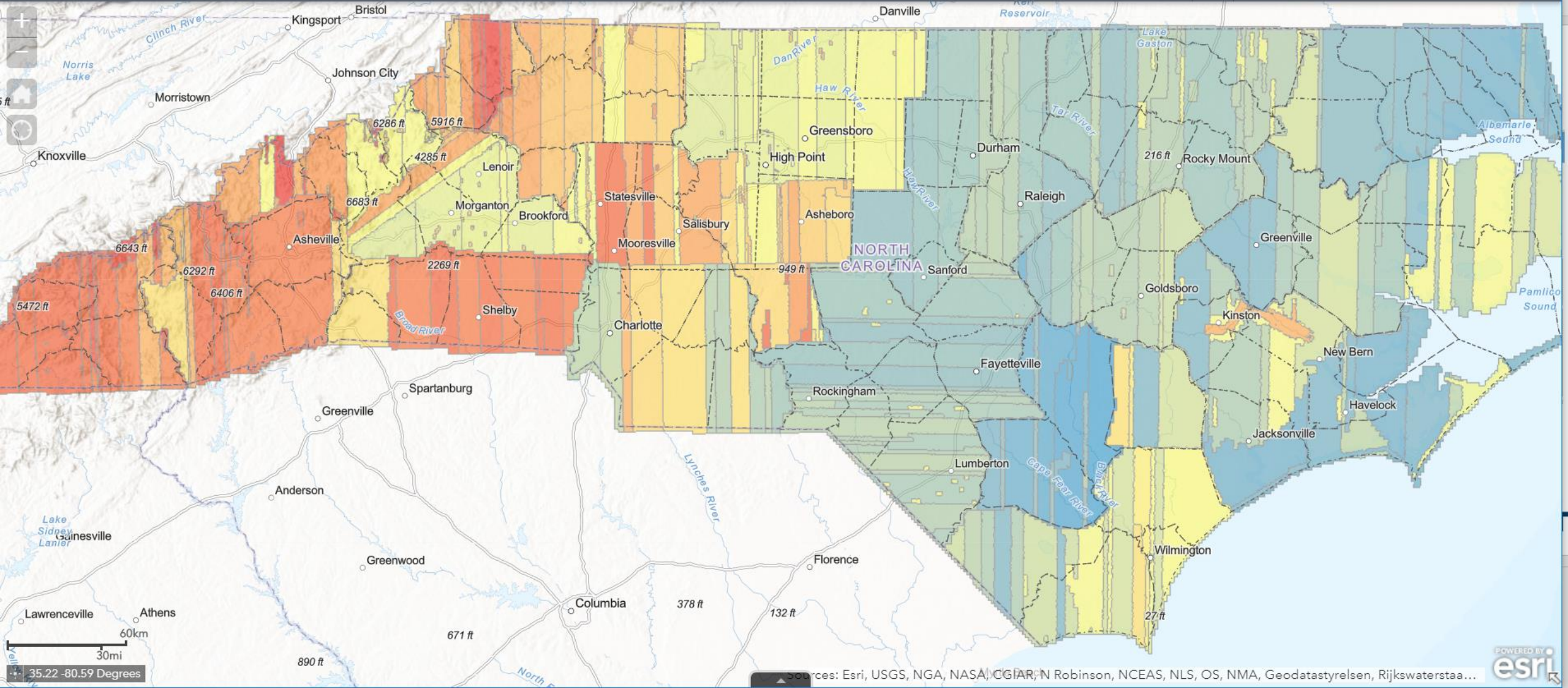
[Flight Lines for Aquisition of NC Statewide Orthoimagery 2010](#)

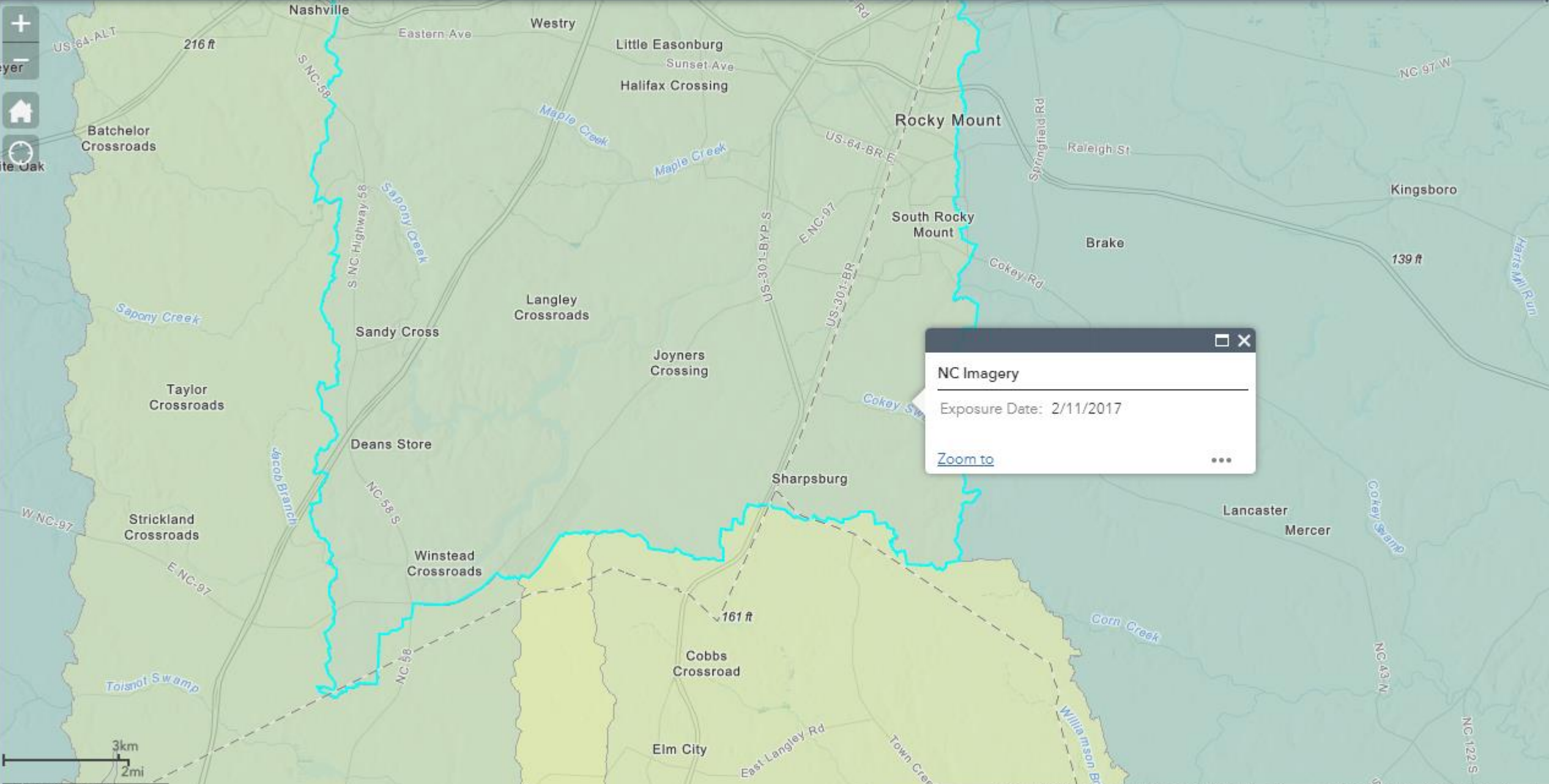


[NC OneMap Ortho Flight Lines/Seam Lines \(and Imagery Dates\) Web Application](#)

Ortho flight lines and seam lines from the NC OneMap orthoimagery projects.

[Download/Open](#) [Preview](#) [Details](#) [Metadata](#) [Zoom To](#)





NC Imagery

Exposure Date: 2/11/2017

[Zoom to](#)



North Carolina Orthoimagery

County Mosaics

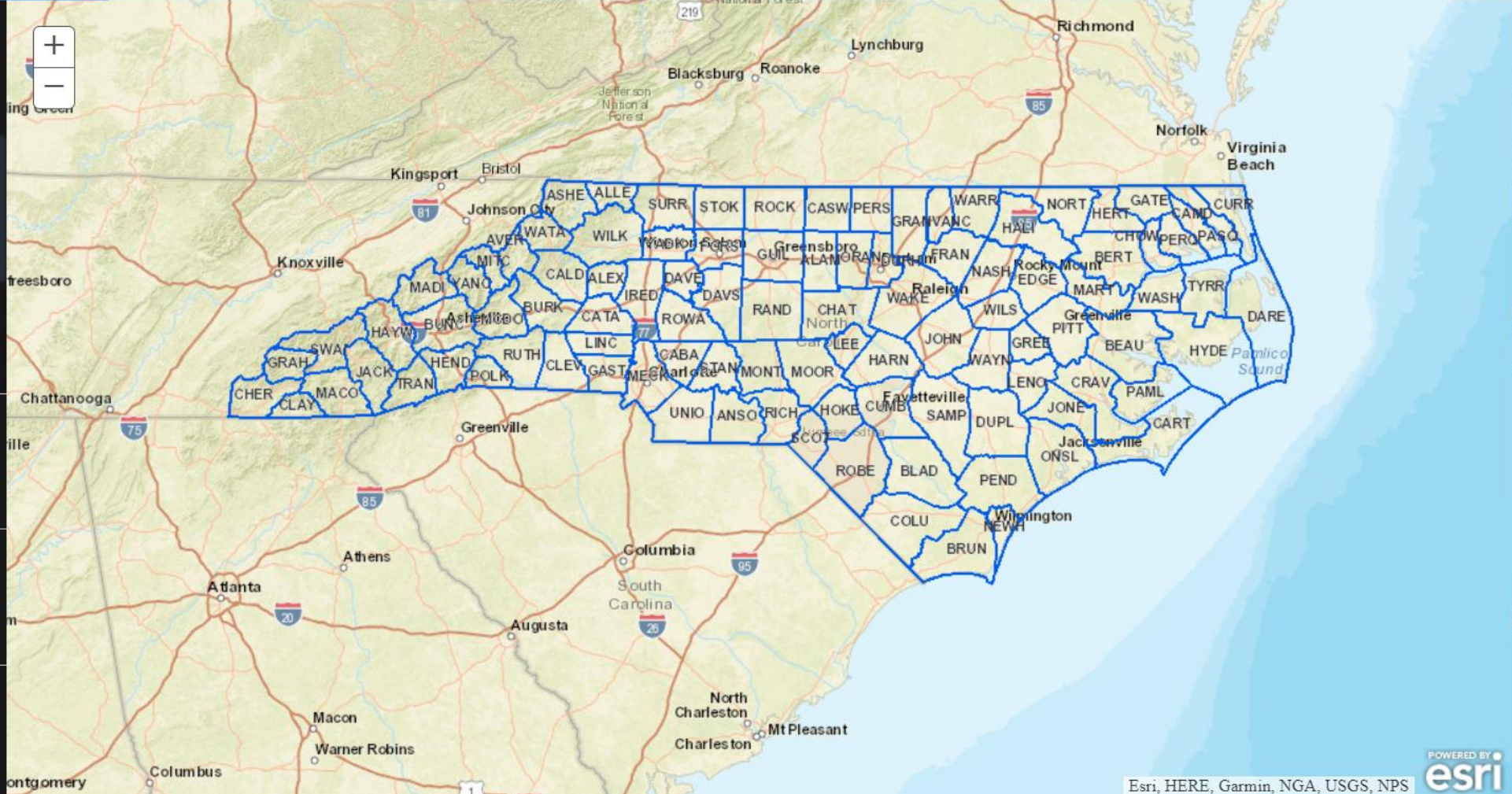
Click any county to display the extents of imagery delivered to 911 Primary Safety Answering Points (PSAP) across the state. This includes a link to download the county mosaic imagery file that was delivered.

To create the mosaic imagery files for each county, the associated imagery is combined into a single MrSID file with a compression ratio of 50:1. Projects since 2015 have extended this mosaic file to a minimum of 7

Imagery Tiles - Index

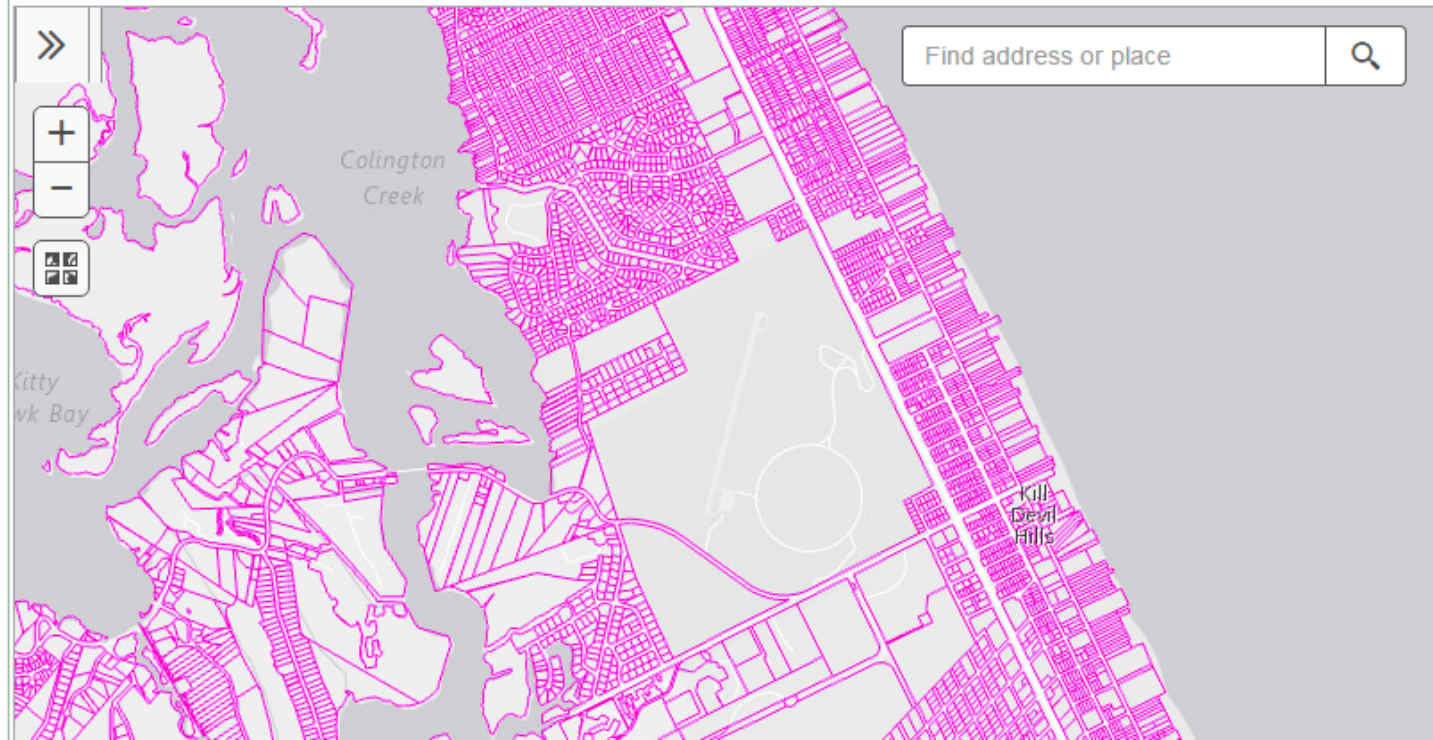
Imagery Acquisition Dates - Seamlines

Streaming Imagery Services



NC Parcels

- Statewide coverage
- Provided by 100 county governments
- ~5.6 million parcels, 30+ attributes
- Updated (TRANSFDATE field)



Search

Text:

Records shown from: This Site

Click here to select different site(s) or configure search.

[More Search Options](#)

[Clear](#)

WHEN

Intersecting Fully within

Start Date: (yyyy-mm-dd)

End Date: (yyyy-mm-dd)

WHERE

Results 1-9 of 9 record(s)

Expand Results

[Zoom To Results](#)

[Zoom To Search Area](#)

[NC OneMap Parcels with Statewide Standardized Attributes - Web Application](#)

North Carolina county parcels with standardized attributes statewide.

[Download/Open](#) [Preview](#) [Details](#) [Metadata](#) [Zoom To](#)

[NC Parcel Boundaries and Standard Fields - ArcGIS Map Service](#)

[NC Parcel Boundaries and Standard Fields - Download](#)

[NC Parcel Boundaries and Standard Fields - ArcGIS Feature Service](#)



PARNO	3556717347
NPARNO	37071_3556717347
ALTPARNO	118638
PARUSECODE	9101
PARUSEDESC	UNDEV OR UNUSED LAND
PARUSEDSC2	
PARUSECD2	
STRUCT	N
STRUCTNO	0
STRUCTYEAR	0
PARVALTYPE	Assessed
IMPROVAL	0.00
LANDVAL	13,125.00
PARVAL	13,125.00
Zoom to	

NextGen 911



NextGen 911 GIS Effort

- **Identify authoritative datasets**
- **Work with local governments and NG911 GIS contractor to assemble**
- **Integrate statewide to support NG911 operations**
- **Establish workflow to sustain**

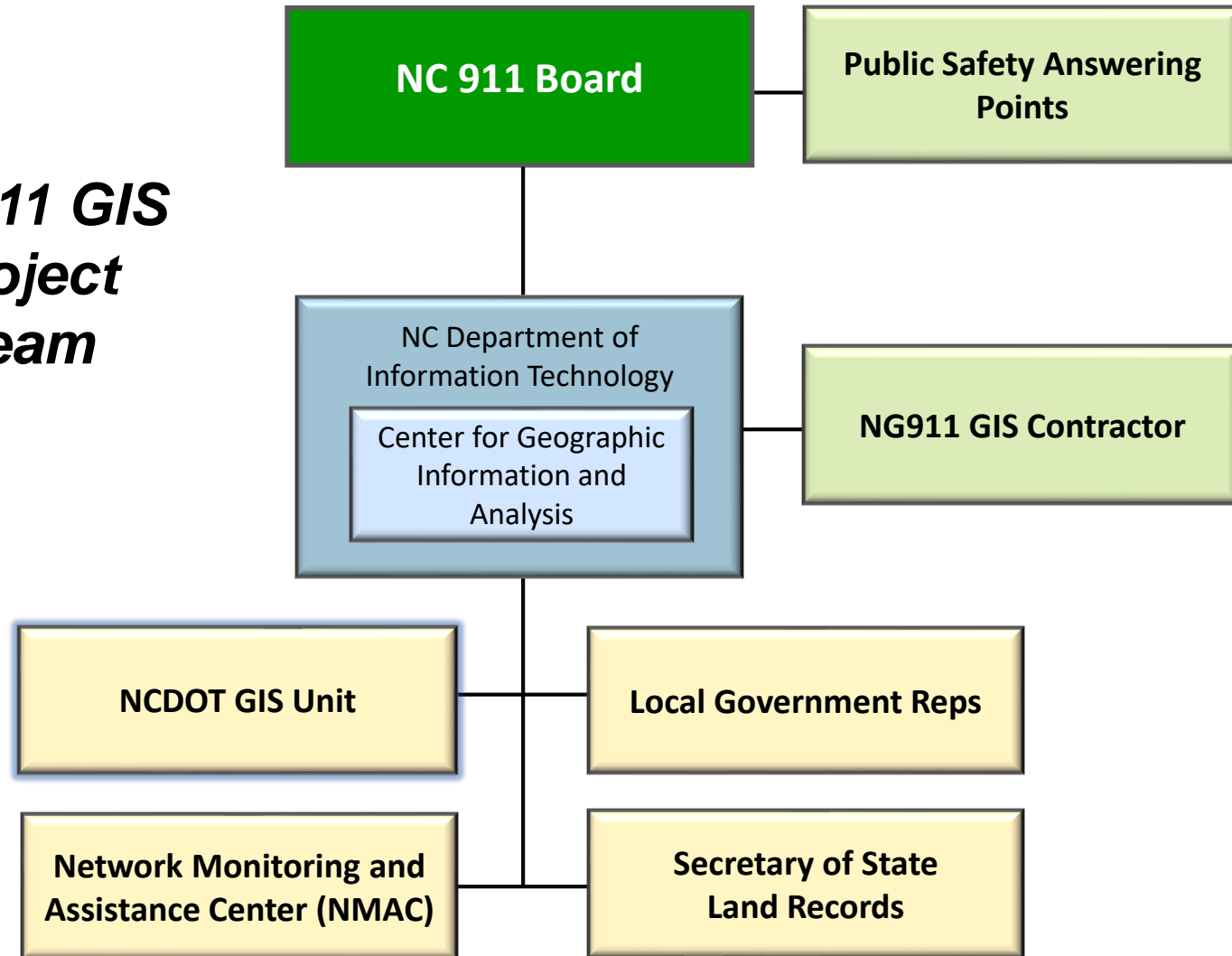


Required NG911 GIS Datasets

- **Road Centerlines**
- **Site/Structure Address Points**
- **Administrative Boundaries**
 - **State**
 - **County**
- **Emergency Services Boundaries**
 - **PSAP Boundary**
 - **Fire**
 - **Police**
 - **EMS**



***NG911 GIS
Project
Team***



7/9/18





Census 2020

- Addresses – residential and non-residential
- Complete population count
- Fair representation
- Fair allocation of federal funding



Census 2020

Boundary Annexation Survey (BAS)

- Annual survey verifying boundaries as of January 1.
- Response deadline is May 31.

Local Update of Census Addresses (LUCA)

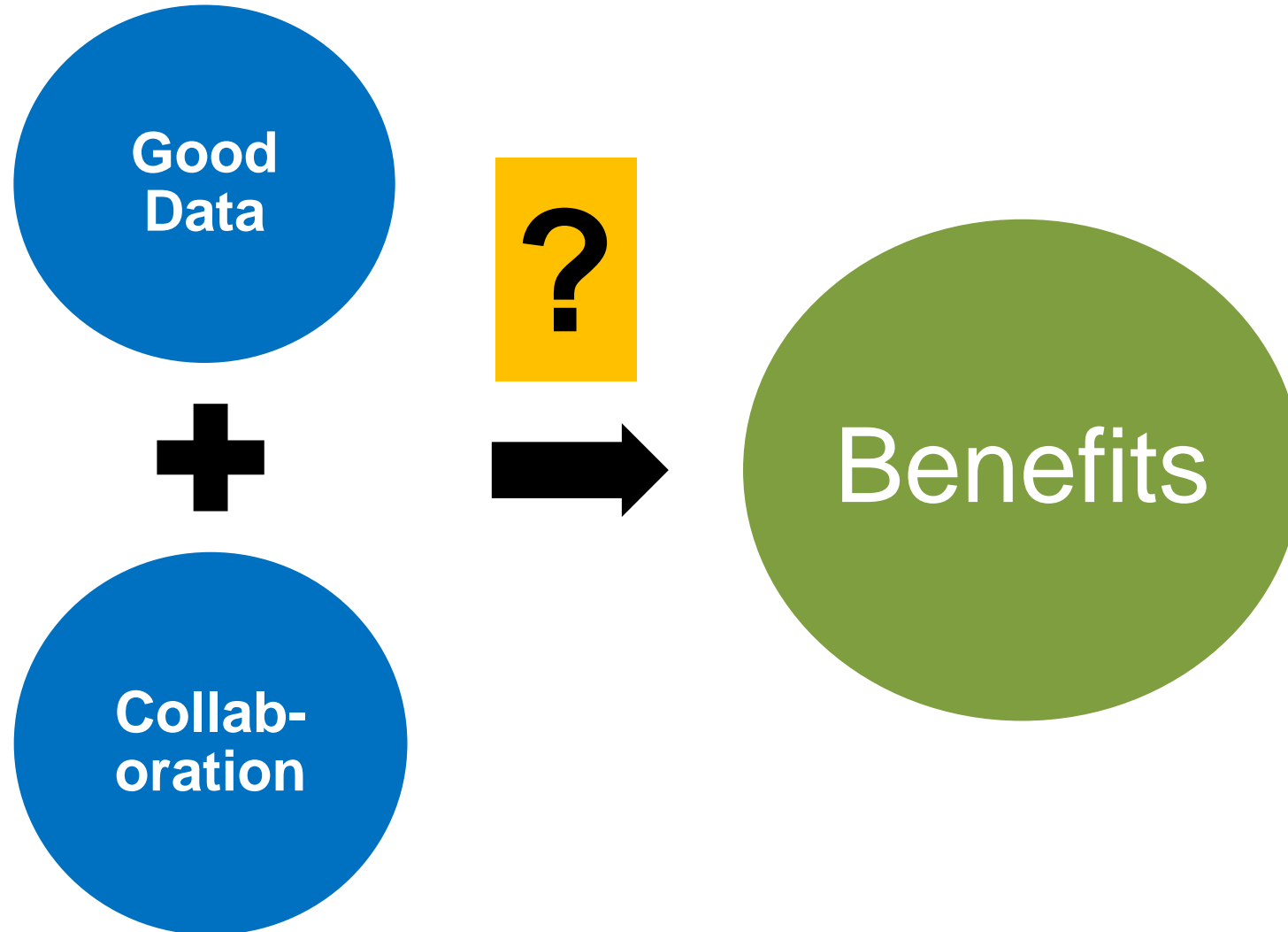
- Once a decade verification of residential addresses.
- In progress

Participants Statistical Areas Program (PSAP)

- Opportunity for local governments to suggest boundaries for small geographies for data publication
- Spring 2019



Going Beyond the Data

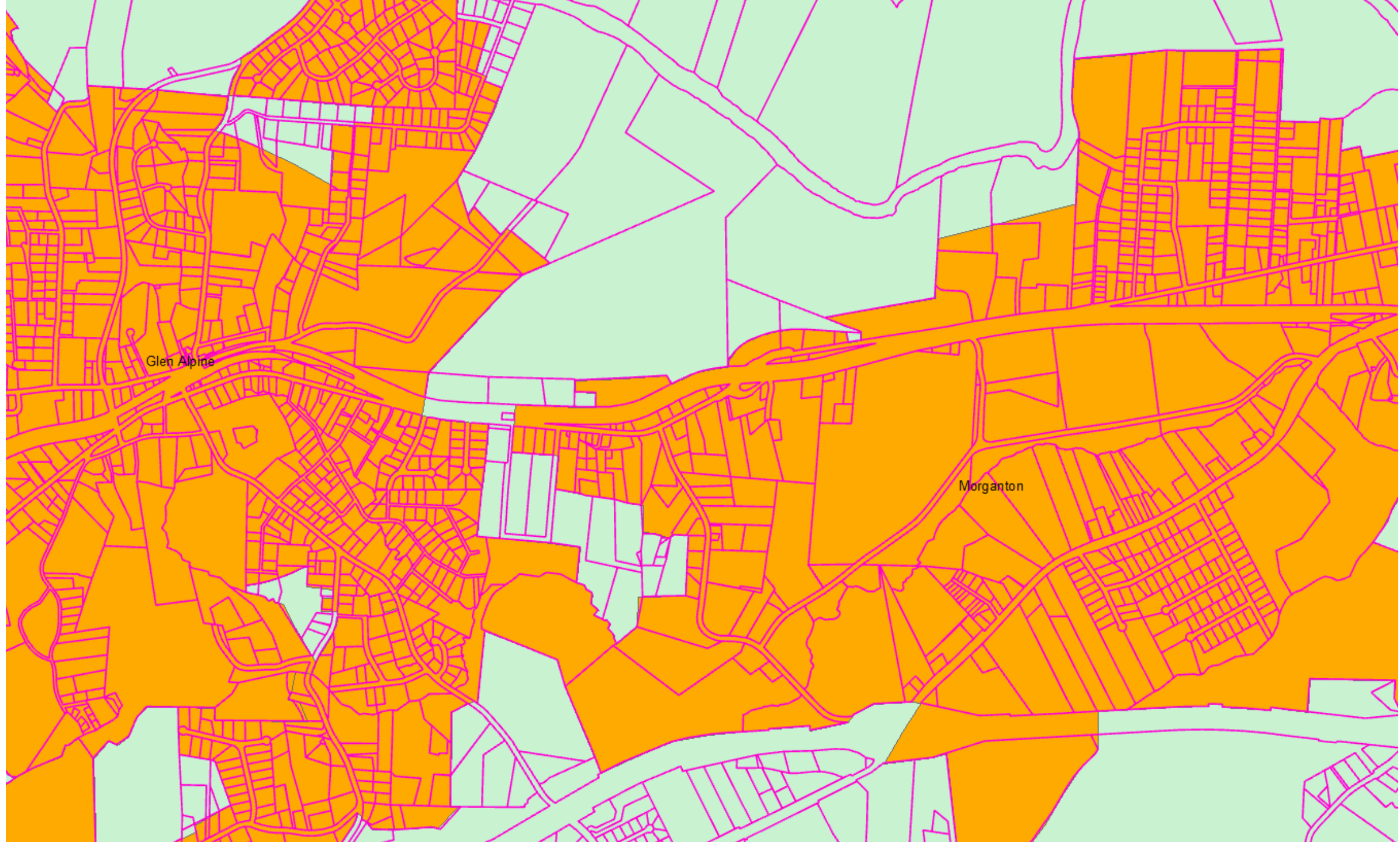


What is the Jurisdiction for each Location of Interest?

- Is property owner information needed with locations?
- Are situs addresses needed with locations?
- Are jurisdictional boundary files complete and reliable?

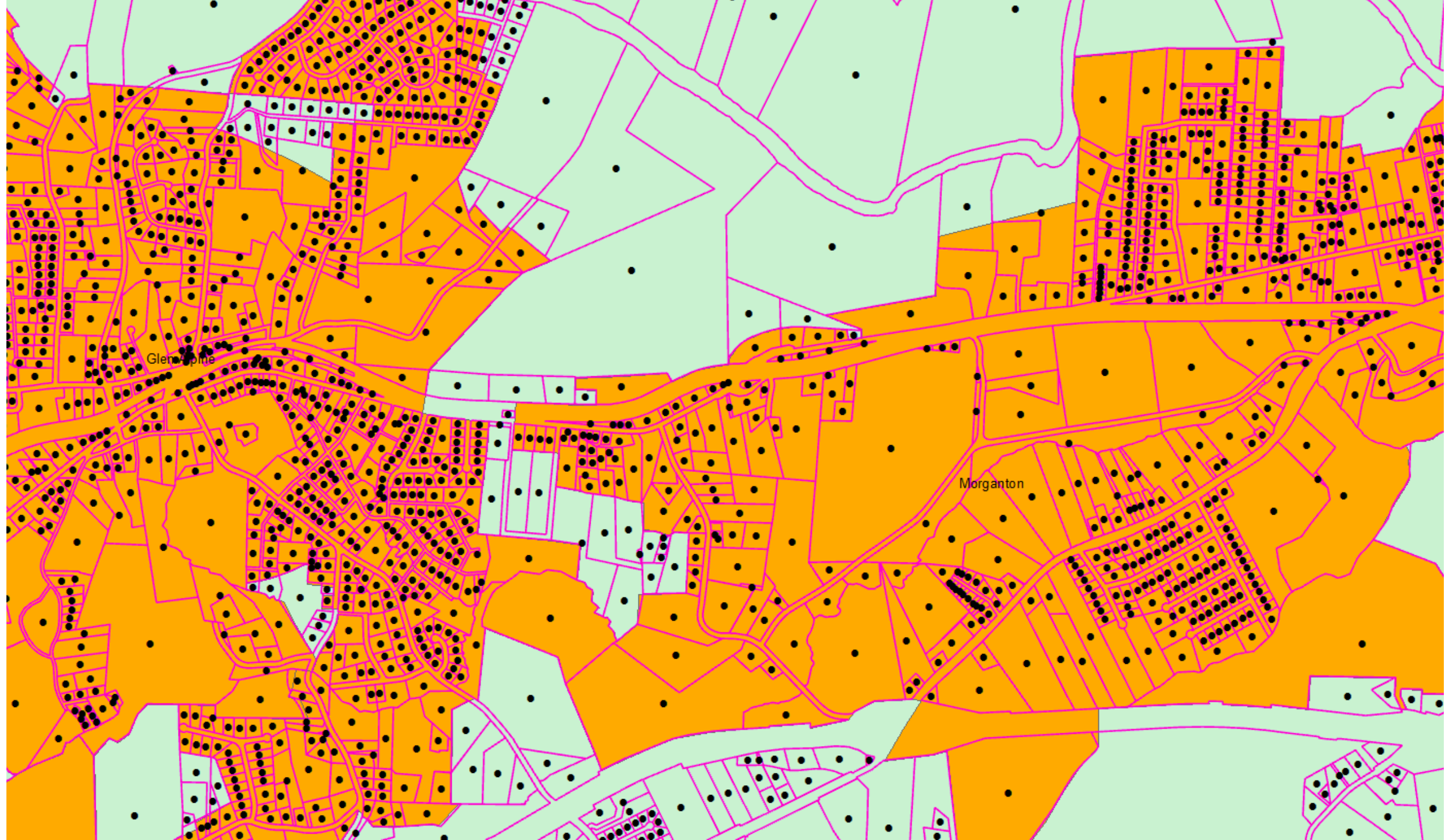
Case 1

- Property ownership by jurisdiction is the primary need
- Geospatial datasets are complete and of adequate quality
 - NC Parcels, property boundaries and center points
 - Statewide municipal boundaries published by NCDOT
- Approach
 - Join the fields from the municipal boundary file to the parcel points, depending on point location (point falls within municipality or not)
 - Select points by municipality name / other analysis



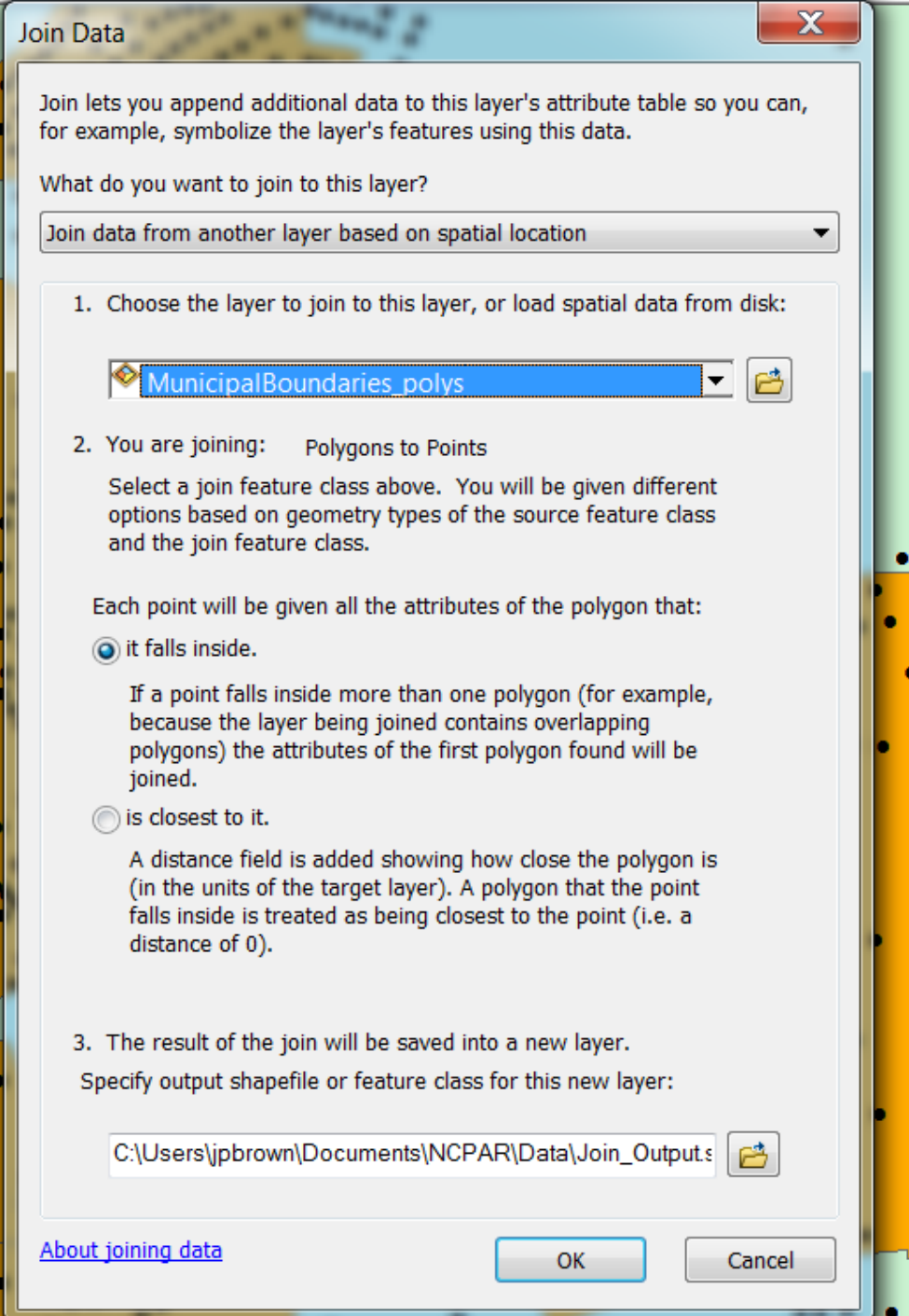
Glen Alpine

Morganton



Glenhope

Morganton



Layers

BurkeParcelPoints_Join_MB2015

MB_NAME

● Connelly Springs

● Drexel

● Glen Alpine

● Hickory

● Hildebran

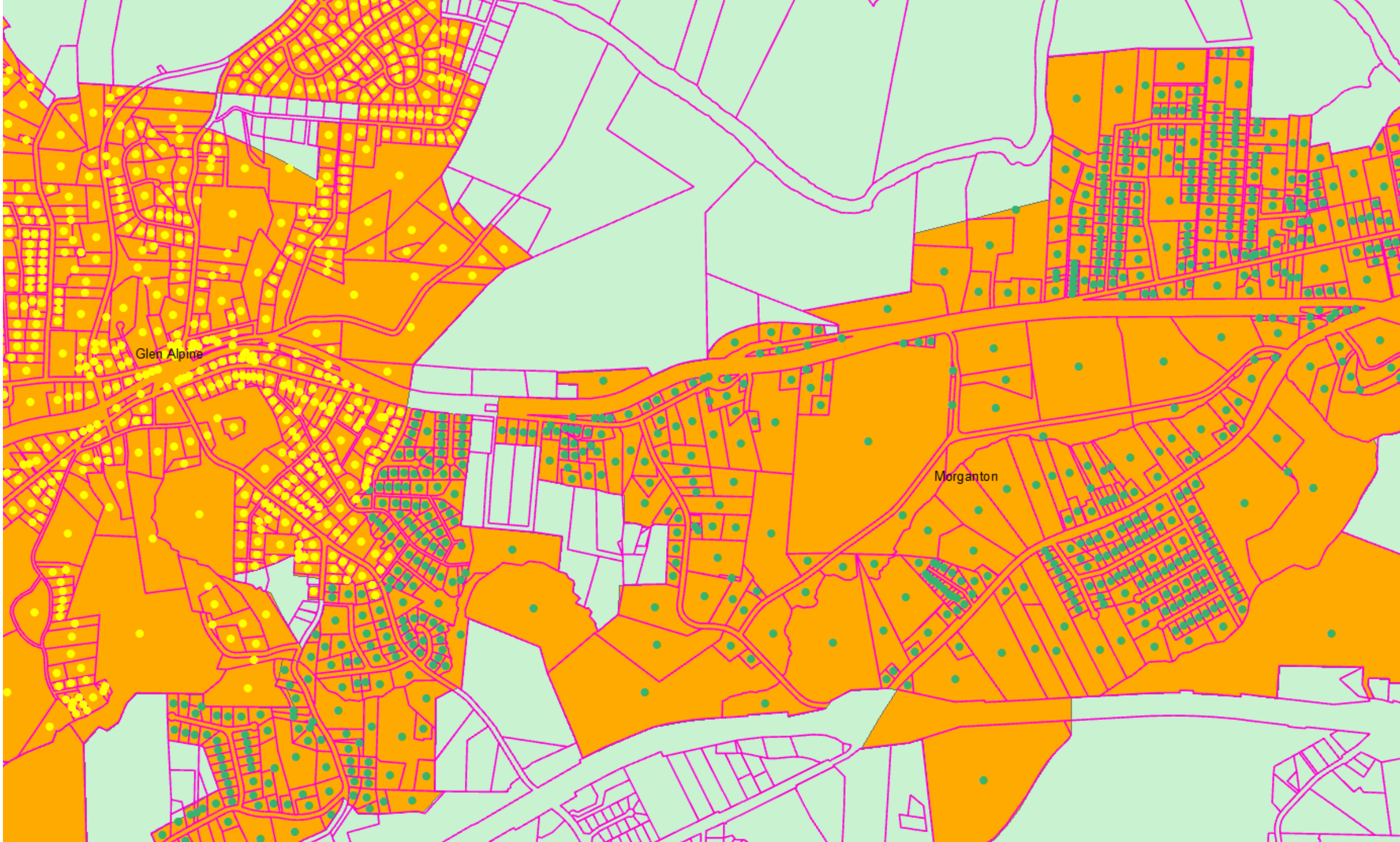
● Long View

● Morganton

● Rhodhiss

● Rutherford College

● Valdese



Glen Alpine

Morganton

Table



BurkeParcelPoints_Join_MB2015

	STRUCT	STRUCTNO	STRUCTYEAR	SUBDIVISIO	SUBOWNTYPE	SUBSURFOWN	SUNIT	SZIP	TRANSFDATE	FID_2	MB_NAME	MB_NAME_U	CNTY_1
	Y	0	1925					28655	2/1/2017	196	Glen Alpine	GLEN ALPINE	BURKE
	Y	0	1935					28655	2/1/2017	196	Glen Alpine	GLEN ALPINE	BURKE
	Y	0	2005					28655	2/1/2017	196	Glen Alpine	GLEN ALPINE	BURKE
	N	0	0					28655	2/1/2017	196	Glen Alpine	GLEN ALPINE	BURKE
	Y	0	1975					28655	2/1/2017	196	Glen Alpine	GLEN ALPINE	BURKE
	Y	0	2005					28655	2/1/2017	196	Glen Alpine	GLEN ALPINE	BURKE
	Y	0	1999					28655	2/1/2017	196	Glen Alpine	GLEN ALPINE	BURKE
	Y	0	1989					28655	2/1/2017	196	Glen Alpine	GLEN ALPINE	BURKE
	N	0	0					28655	2/1/2017	196	Glen Alpine	GLEN ALPINE	BURKE
	Y	0	1976					28655	2/1/2017	196	Glen Alpine	GLEN ALPINE	BURKE
	Y	0	1975					28655	2/1/2017	196	Glen Alpine	GLEN ALPINE	BURKE
	Y	0	1976					28655	2/1/2017	196	Glen Alpine	GLEN ALPINE	BURKE
	Y	0	2005					28655	2/1/2017	196	Glen Alpine	GLEN ALPINE	BURKE
	Y	0	2005					28655	2/1/2017	196	Glen Alpine	GLEN ALPINE	BURKE
	Y	0	2004					28655	2/1/2017	196	Glen Alpine	GLEN ALPINE	BURKE
	Y	0	1972					28655	2/1/2017	196	Glen Alpine	GLEN ALPINE	BURKE
	Y	0	1979					28655	2/1/2017	196	Glen Alpine	GLEN ALPINE	BURKE
	Y	0	1976					28655	2/1/2017	196	Glen Alpine	GLEN ALPINE	BURKE
	Y	0	2007					28655	2/1/2017	196	Glen Alpine	GLEN ALPINE	BURKE
	Y	0	1938					28655	2/1/2017	196	Glen Alpine	GLEN ALPINE	BURKE
	Y	0	1968					28655	2/1/2017	196	Glen Alpine	GLEN ALPINE	BURKE
	Y	0	1935					28655	2/1/2017	196	Glen Alpine	GLEN ALPINE	BURKE
	Y	0	1950					28655	2/1/2017	196	Glen Alpine	GLEN ALPINE	BURKE
	N	0	0					28655	2/1/2017	196	Glen Alpine	GLEN ALPINE	BURKE
	Y	0	2003					28655	2/1/2017	196	Glen Alpine	GLEN ALPINE	BURKE
	Y	0	2003					28655	2/1/2017	196	Glen Alpine	GLEN ALPINE	BURKE
	Y	0	2001					28655	2/1/2017	196	Glen Alpine	GLEN ALPINE	BURKE
	Y	0	2002					28655	2/1/2017	196	Glen Alpine	GLEN ALPINE	BURKE
	Y	0	0					28655	2/1/2017	196	Glen Alpine	GLEN ALPINE	BURKE
	Y	0	2002					28655	2/1/2017	196	Glen Alpine	GLEN ALPINE	BURKE
	Y	0	2002					28655	2/1/2017	196	Glen Alpine	GLEN ALPINE	BURKE
	Y	0	1953					28655	2/1/2017	196	Glen Alpine	GLEN ALPINE	BURKE
	Y	0	2006					28655	2/1/2017	196	Glen Alpine	GLEN ALPINE	BURKE
	Y	0	1962					28655	2/1/2017	196	Glen Alpine	GLEN ALPINE	BURKE
	N	0	0					28655	2/1/2017	196	Glen Alpine	GLEN ALPINE	BURKE

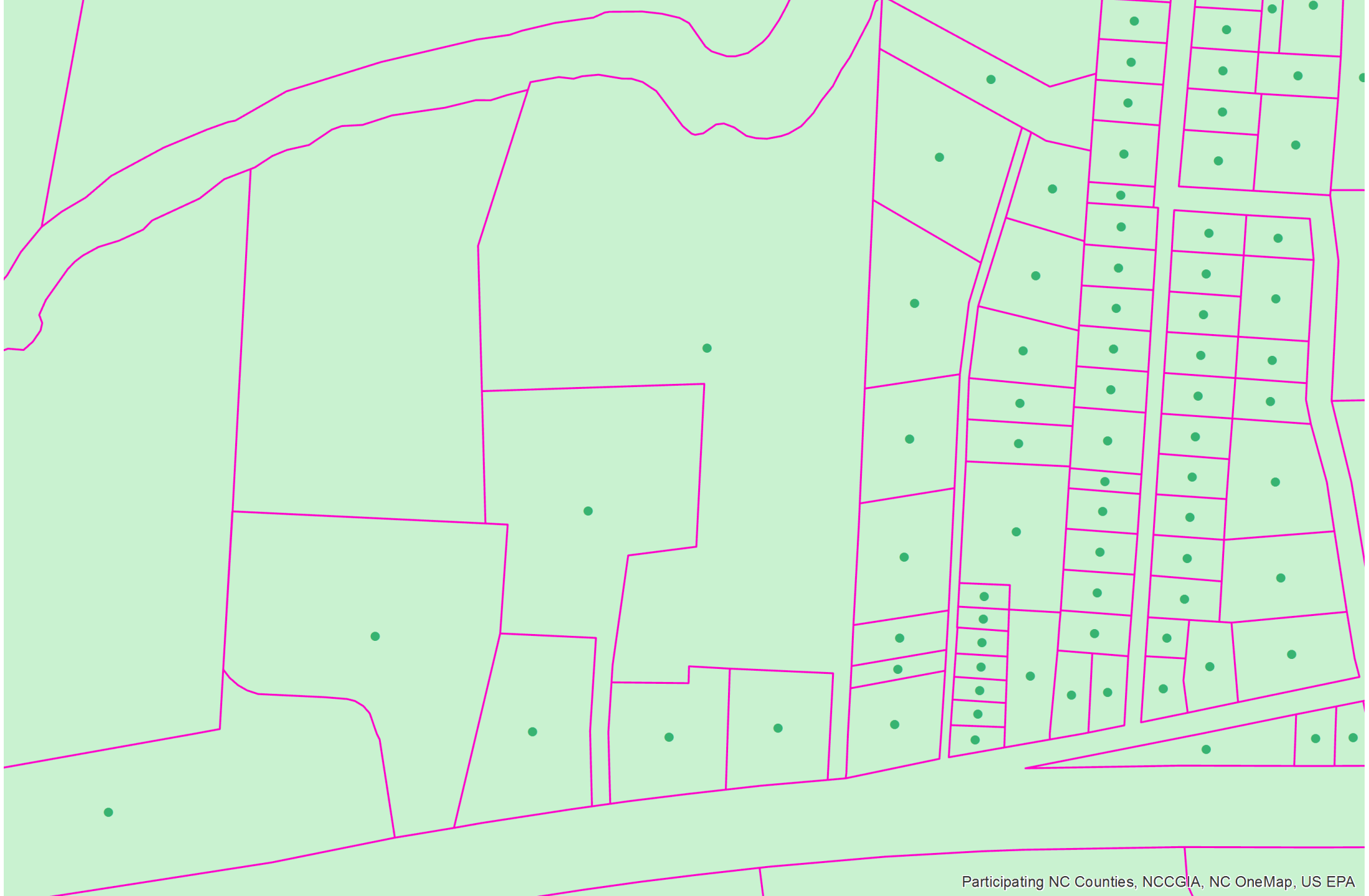
Glen Alpine

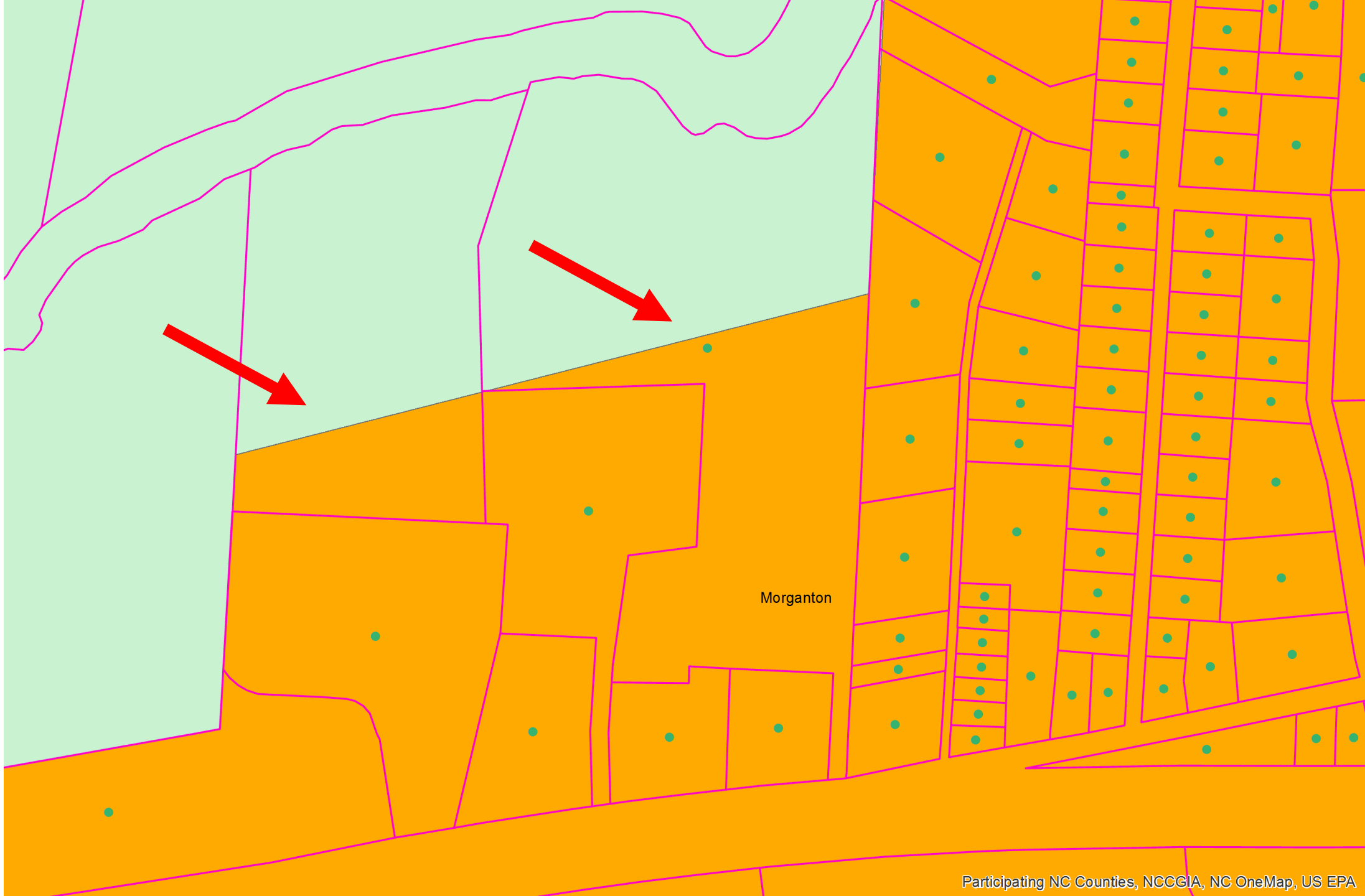
Morganton



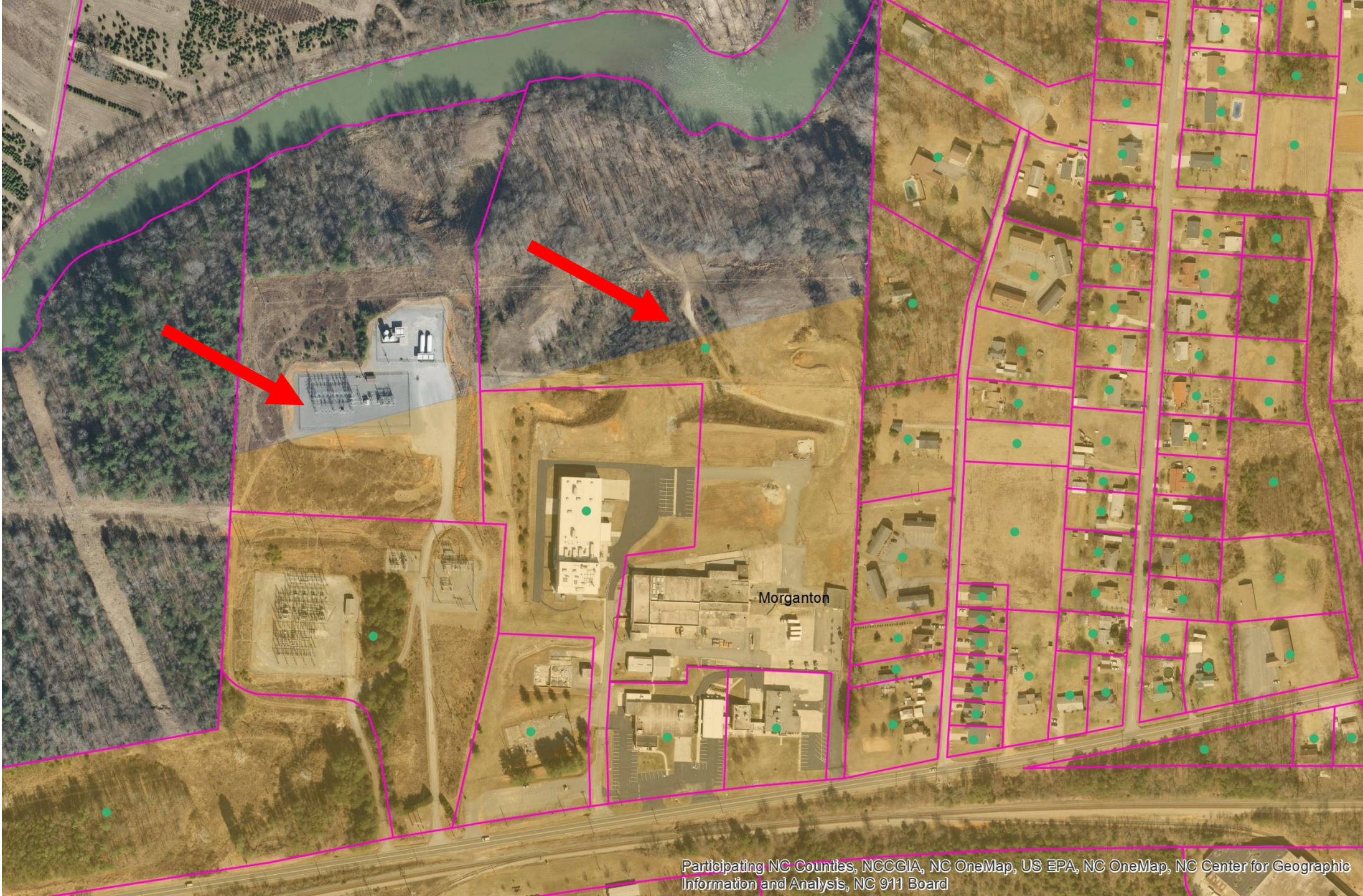
LOCADDR	PANUM	PAPFX	PASTR	PATYPE	PASFX	PAMISC	PACITY	PASTATE	PAZIP
6174 FOX GAP ST	6174		FOX GAP	ST			MORGANTO	NC	28655
0 FOX GAP ST	0		FOX GAP	ST			MORGANTO	NC	28655
6131 TALLENT HOLLAR	6131		TALLENT HOLLAR				MORGANTO	NC	28655
0 FOX GAP ST	0		FOX GAP	ST			MORGANTO	NC	28655
6138 TALLENT HOLLAR	6138		TALLENT HOLLAR				MORGANTO	NC	28655
6119 TALLENT HOLLAR	6119		TALLENT HOLLAR				MORGANTO	NC	28655
6164 FOX GAP ST	6164		FOX GAP	ST			MORGANTO	NC	28655
6178 FOX GAP ST	6178		FOX GAP	ST			MORGANTO	NC	28655
6200 FOX GAP ST	6200		FOX GAP	ST			MORGANTO	NC	28655
6125 TALLENT HOLLAR	6125		TALLENT HOLLAR				MORGANTO	NC	28655
0 TALLENT HOLLAR	0		TALLENT HOLLAR				MORGANTO	NC	28655
6164 TALLENT HOLLAR ST	6164		TALLENT HOLLAR	ST			MORGANTO	NC	28655
0 TALLENT HOLLAR	0		TALLENT HOLLAR				MORGANTO	NC	28655
6162 FOX GAP ST	6162		FOX GAP	ST			MORGANTO	NC	28655
6065 TALLENT HOLLAR	6065		TALLENT HOLLAR				MORGANTO	NC	28655
0 TALLENT HOLLAR	0		TALLENT HOLLAR				MORGANTO	NC	28655
6184 TALLENT HOLLAR ST	6184		TALLENT HOLLAR	ST			MORGANTO	NC	28655
6127 TALLENT HOLLAR	6127		TALLENT HOLLAR				MORGANTO	NC	28655
0 TALLENT HOLLAR	0		TALLENT HOLLAR				MORGANTO	NC	28655
6191 TALLENT HOLLAR	6191		TALLENT HOLLAR				MORGANTO	NC	28655
0 TALLENT HOLLAR	0		TALLENT HOLLAR				MORGANTO	NC	28655
6200 TALLENT HOLLAR ST	6200		TALLENT HOLLAR	ST			MORGANTO	NC	28655
0 TALLENT HOLLAR	0		TALLENT HOLLAR				MORGANTO	NC	28655
103 PITTS ST	103		PITTS	ST			MORGANTO	NC	28655
6648 ROPER HOLLOW RD	6648		ROPER HOLLOW	RD			MORGANTO	NC	28655
6652 ROPER HOLLOW RD	6652		ROPER HOLLOW	RD			MORGANTO	NC	28655
0 US 64	0		US 64				MORGANTO	NC	28655
4401 SILVER CREEK CHURCH RD	4401		SILVER CREEK CHURCH	RD			MORGANTO	NC	28655
6336 US 64	6336		US 64				MORGANTO	NC	28655
6680 ROPER HOLLOW RD	6680		ROPER HOLLOW	RD			MORGANTO	NC	28655
6315 US 64	6315		US 64				MORGANTO	NC	28655
6484 US 64	6484		US 64				MORGANTO	NC	28655
6329 US 64	6329		US 64				MORGANTO	NC	28655
0 US 64	0		US 64				MORGANTO	NC	28655
6409 US 64	6409		US 64				MORGANTO	NC	28655
6405 US 64	6405		US 64				MORGANTO	NC	28655
6336 US 64	6336		US 64	ST			MORGANTO	NC	28655

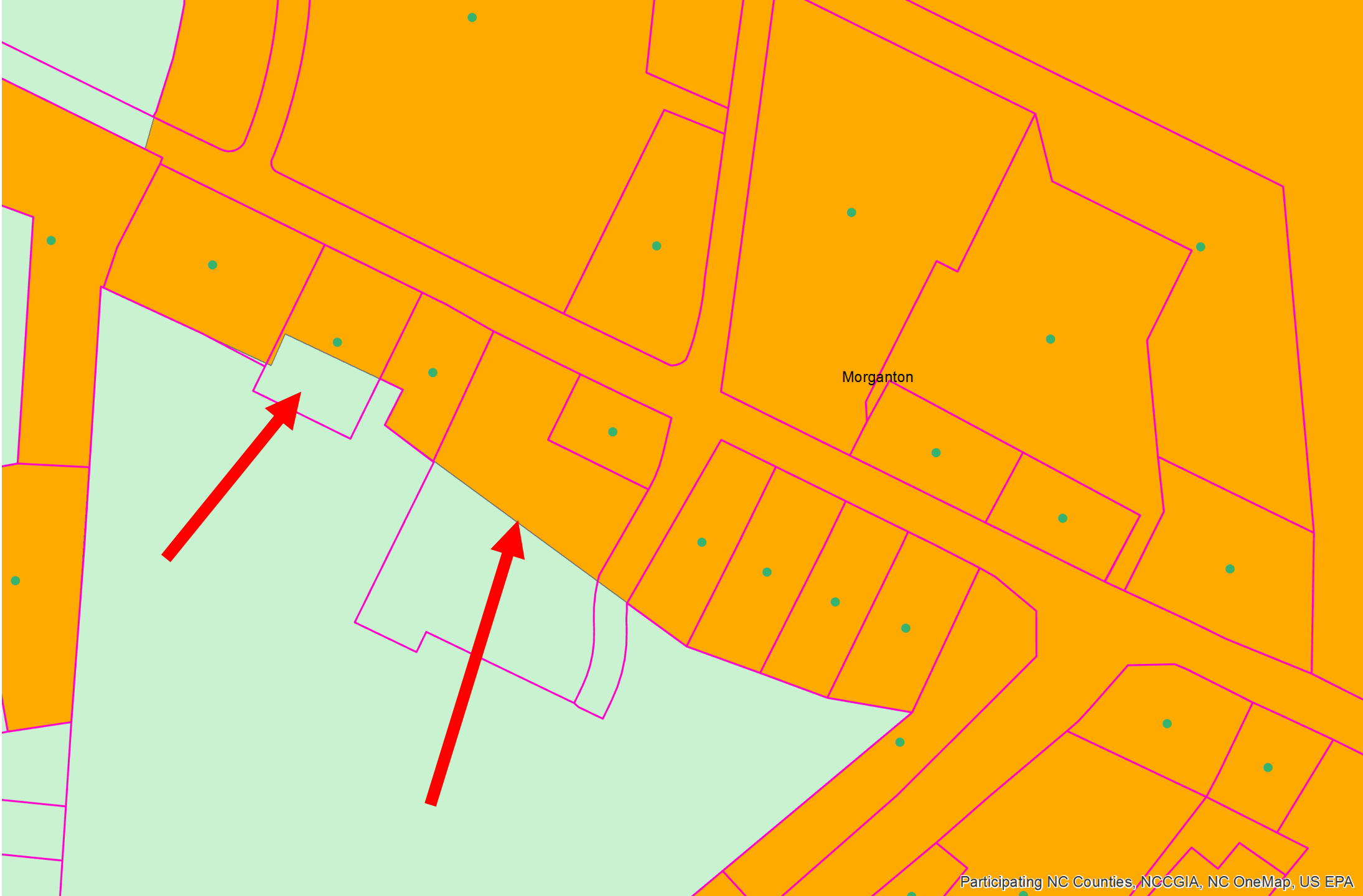
STPRE	STSUF	STNUM	STMISC	SITEADDR	FULLSTNAME	CITY	CITYDECODE	PLAN_JURIS	TOWNSHIP	TWNSHPCODE	FIREDIST	YEAR_BUILT
		1613		1613 MAYBROOK DR	MAYBROOK DR	RAL	RALEIGH	RA	17	St. Matthew's		1986
		208		208 MEDCON CT	MEDCON CT	CAR	CARY	CA	04	Cary		1972
		1144		1144 HIDDEN HILLS DR	HIDDEN HILLS DR			WC	14	New Light	23	2012
		121		121 CABANA DR	CABANA DR	APE	APEX	AP	20	White Oak		2000
		1921		1921 BARWELL RD	BARWELL RD			RA	17	St. Matthew's	23	1961
		1212		1212 MAGNOLIA HILL RD	MAGNOLIA HILL RD			WC	15	Panther Branch	23	2006
		7101		7101 WINBURNE CT	WINBURNE CT			WC	14	NEW LIGHT	23	2013
		0		0 THOMPSON MILL RD	THOMPSON MILL RD			WC	19	Wake Forest	23	0
		2750		2750 WENDELL BLVD	WENDELL BLVD			WE	10	Mark's Creek	23	1957
		10605		10605 HANARRY CT	HANARRY CT			WC	02	Barton's Creek	23	1986
		209		209 STAR MAGNOLIA DR	STAR MAGNOLIA DR	MOR	MORRISVILLE	MO	05	Cedar Fork		2004
		304		304 COUNTRY VALLEY CT	COUNTRY VALLEY CT	APE	APEX	AP	20	White Oak		2003
		1827		1827 ARLINGTON ST	ARLINGTON ST	RAL	RALEIGH	RA	01	Raleigh		1950
		215		215 CARAWAY LN	CARAWAY LN	CAR	CARY	CA	20	White Oak		1997
		7548		7548 BRIGHTON HILL LN	BRIGHTON HILL LN	RAL	RALEIGH	RA	19	Wake Forest		2001
		1429		1429 FARLOW RD	FARLOW RD			WC	16	St. Mary's	23	0
		5604		5604 BIG SANDY DR	BIG SANDY DR	RAL	RALEIGH	RA	13	Neuse		0
		2108		2108 TURTLE POINT DR	TURTLE POINT DR	RAL	RALEIGH	RA	17	St. Matthew's		1996
		109		109 BLUEGRASS DR	BLUEGRASS DR	GAR	GARNER	GA	16	St. Mary's		1974
		6213		6213 KRANDON DR	KRANDON DR			WC	16	St. Mary's	23	1988
		5520		5520 ORCHARD POND DR	ORCHARD POND DR	RAL	RALEIGH	RA	13	Neuse		1998
		2529		2529 DEANWOOD DR	DEANWOOD DR	RAL	RALEIGH	RA	13	Neuse		1994
		1500		1500 JEFFREY ST	JEFFREY ST			RA	17	St. Matthew's	23	1972
		2504		2504 DANDRIDGE DR	DANDRIDGE DR	RAL	RALEIGH	RA	16	St. Mary's		2001
		3825		3825 SUMMERWOOD CT	SUMMERWOOD CT	RAL	RALEIGH	RA	07	House Creek		1982
		202		202 LANGSTON MILL CT	LANGSTON MILL CT	CAR	CARY	CA	18	Swift Creek		1992
		206		206 SOUTH BEND DR	SOUTH BEND DR			WC	10	Mark's Creek	23	1983
		1628		1628 LEGENDARY LN	LEGENDARY LN	MOR	MORRISVILLE	MO	05	Cedar Fork		2006
		310		310 BARTHEL DR	BARTHEL DR	CAR	CARY	CA	04	Cary		1992
		102		102 SIR JAMES CT	SIR JAMES CT	CAR	CARY	CA	05	Cedar Fork		1994
		6129		6129 BELLOW ST	BELLOW ST	RAL	RALEIGH	RA	07	House Creek		1969
		8633		8633 HOBHOUSE CIR	HOBHOUSE CIR	RAL	RALEIGH	RA	13	Neuse		1996
		109		109 VALENTA CT	VALENTA CT	CAR	CARY	CA	04	Cary		1998
		2517		2517 WINTERBURY CT	WINTERBURY CT	RAL	RALEIGH	RA	01	Raleigh		1985
		3617		3617 NIGHTFALL CT	NIGHTFALL CT	RAL	RALEIGH	RA	04	Cary		2008
		2132		2132 RIDGE RD	RIDGE RD	RAL	RALEIGH	RA	01	Raleigh		1957
		5309		5309 EDINGTON LN	EDINGTON LN			RA	17	St. Matthew's	23	1972
		151		151 WAKELON ST	WAKELON ST	ZEB	ZEBULON	ZB	09	Little River		1988
		8898		8898 ELIZABETH BENNET PL	ELIZABETH BENNET PL	RAL	RALEIGH	RA	13	Neuse		2005
		6505		6505 ROCK QUARRY RD	ROCK QUARRY RD			RA	16	St. Mary's	23	0



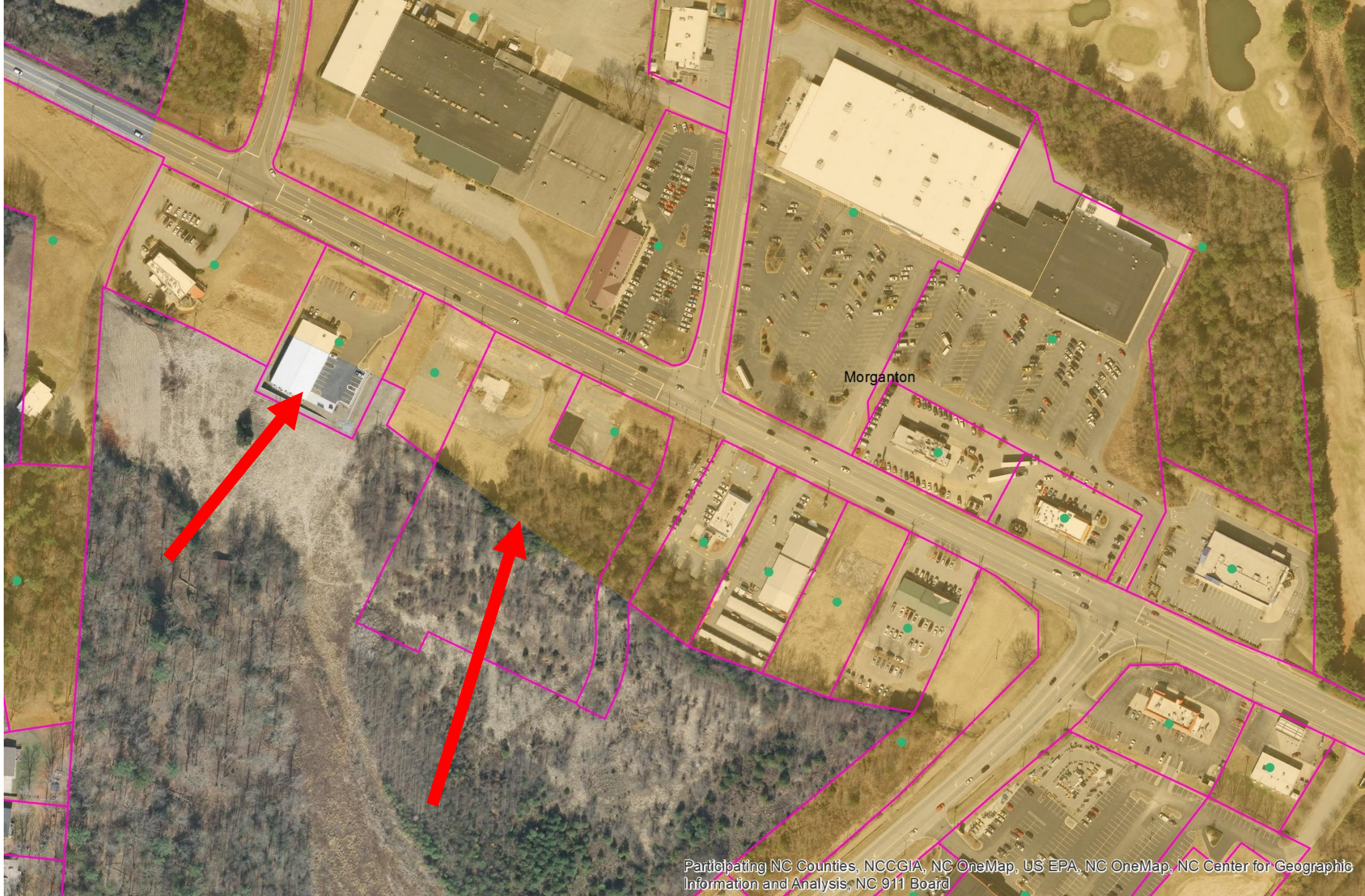


Morganton

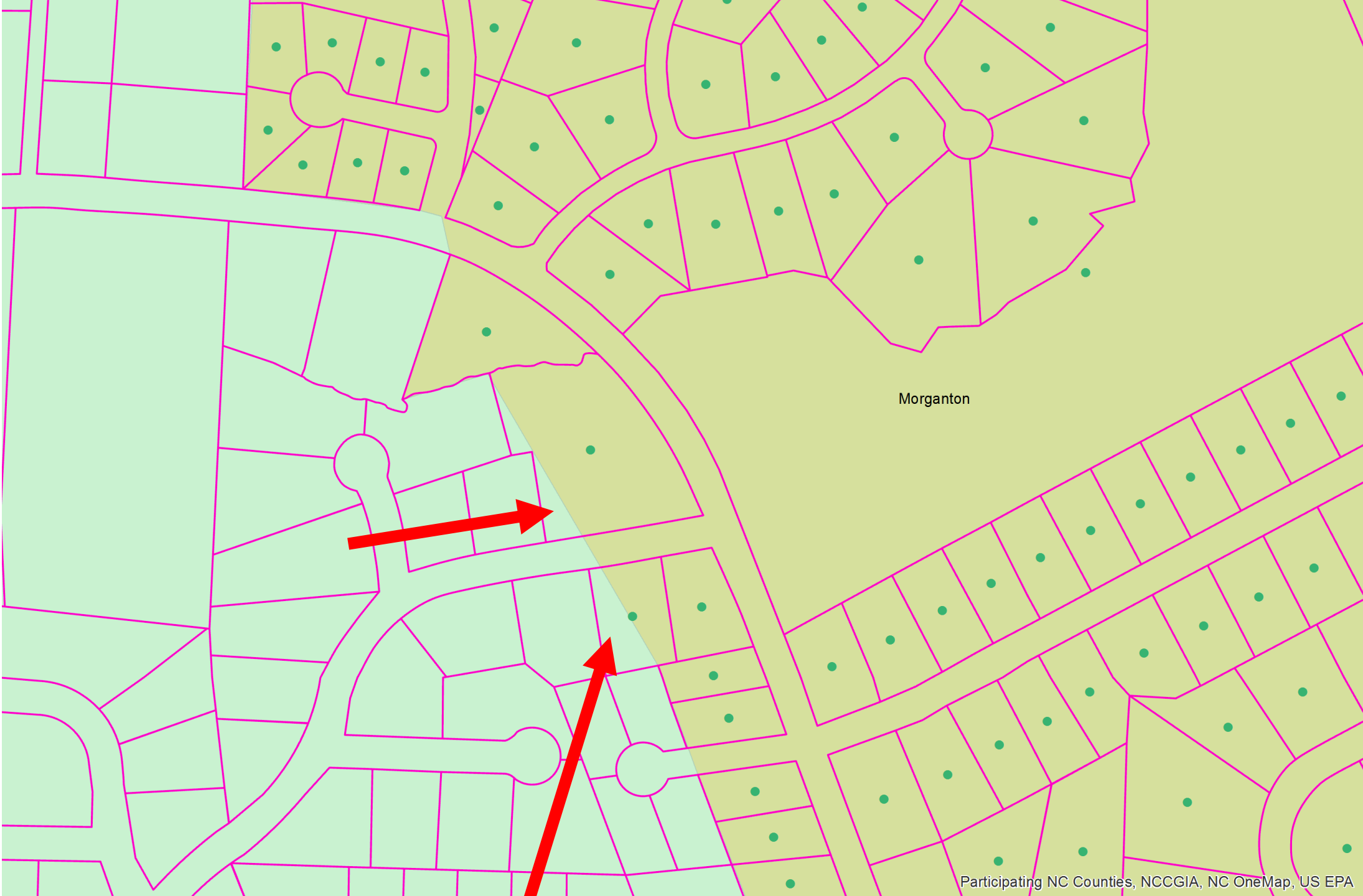




Morganton



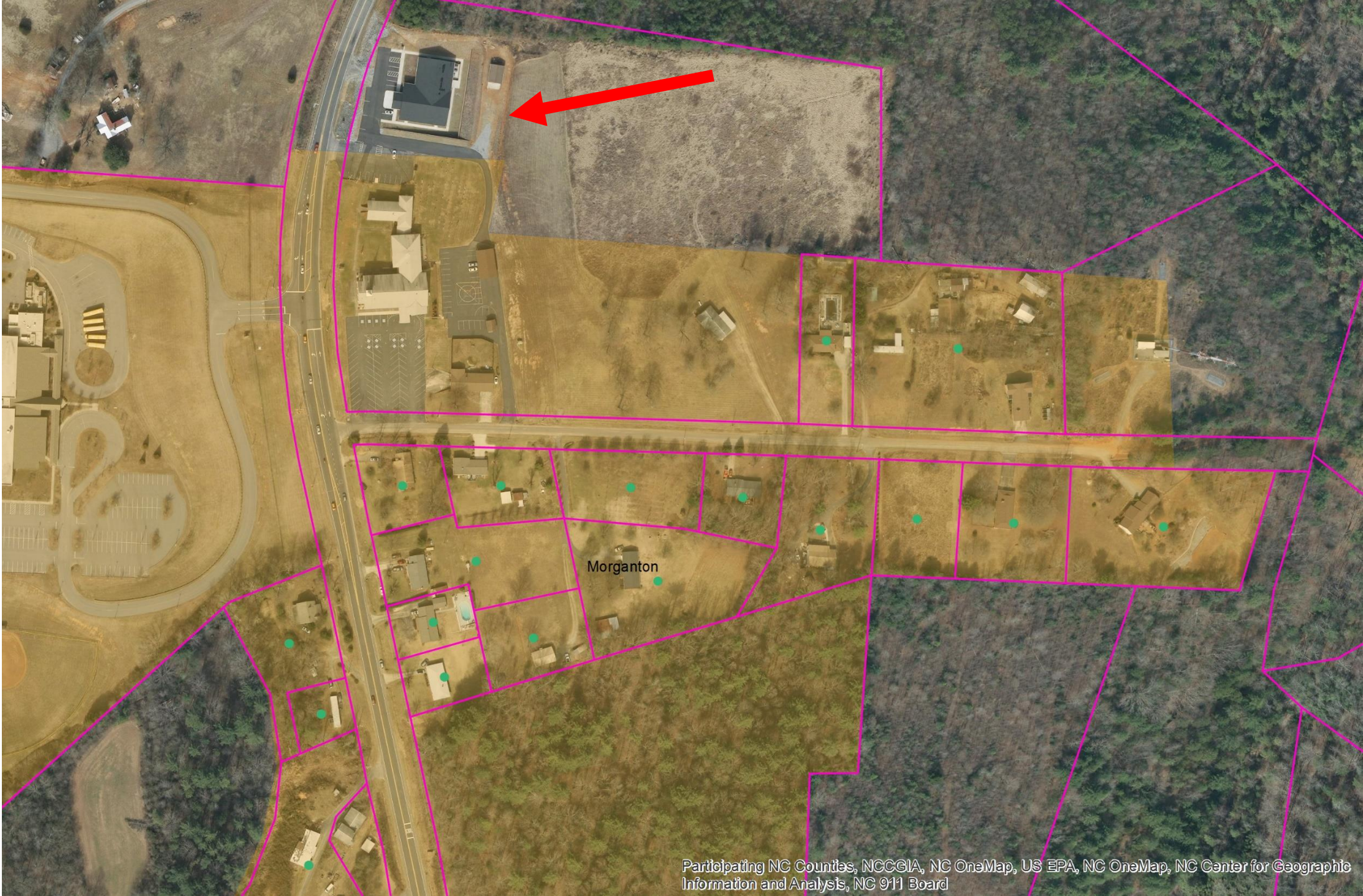
Morganton



Morganton



Morganton



Burke County Example

- 7,825 parcels are in the City of Morganton based on parcel center points and Powell Bill municipal boundaries
- By visual inspection of the perimeter of Morganton
 - Municipal boundaries for Morganton (Powell Bill) coincide with property boundaries in nearly all instances
 - 10 parcels had area partly inside and partly outside the incorporated area or 0.13 percent

More - Burke County Example

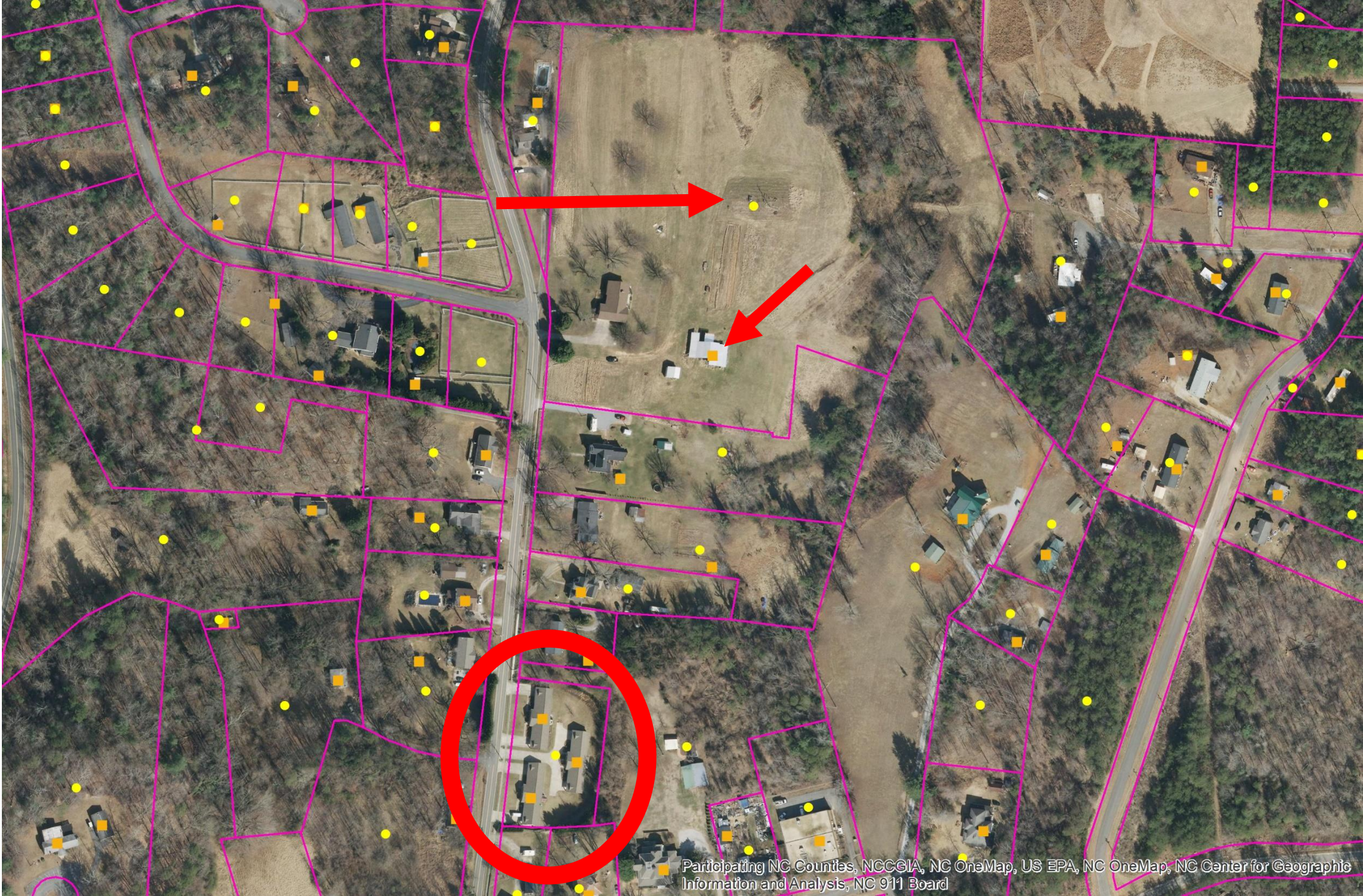
- Using parcel points to select parcels within municipal boundaries is a practical geospatial process
- What is missing?
 - NC Parcels have fields for type of use (residential, commercial, etc.) but they are not populated completely or consistently by counties
 - NC Parcels records have fields for situs address that may or may not be populated depending on the county source parcels

Case 2

- Situs address by jurisdiction is the primary need
- Geospatial datasets are complete and of adequate quality
 - AddressNC address points
 - Statewide municipal boundaries published by NCDOT
- Approach
 - Join the fields from the municipal boundary file to the address points, depending on point location (point falls within municipality or not)
 - Select points by municipality name / other analysis

Address Points

- Address points may be located on or near one or more primary structures within a property
- Address points overall are likely to better represent locations of residences and businesses than center points of parcels



Address Points in NC

- Required for Next Generation 911
- AddressNC
 - Collaborate with NextGen911
 - Develop geoprocessing services
 - Validate addresses
 - Match tabular addresses to locations for mapping

NC GIS Conference 2019

NCGIS2019

February 27 - March 1, 2019

Winston-Salem

Benton Convention Center

Details coming soon!



NC Geographic Information Coordinating Council

<https://it.nc.gov/gicc>

NC Center for Geographic Information and Analysis

<https://it.nc.gov/center-geographic-information-and-analysis-cgia>



Council Chair: Alex Rankin
giccchair@gmail.com

Council Staff: Tim Johnson
tim.johnson@nc.gov

Jeff Brown
jeff.brown@nc.gov

